


APP CRS	Rwy Idg	<b>9300</b>
<b>135°</b>	TDZE	<b>591</b>
	Apt Elev	<b>606</b>

# RNAV (RNP) Z RWY 13R

DALLAS-FORT WORTH INTL (DFW)

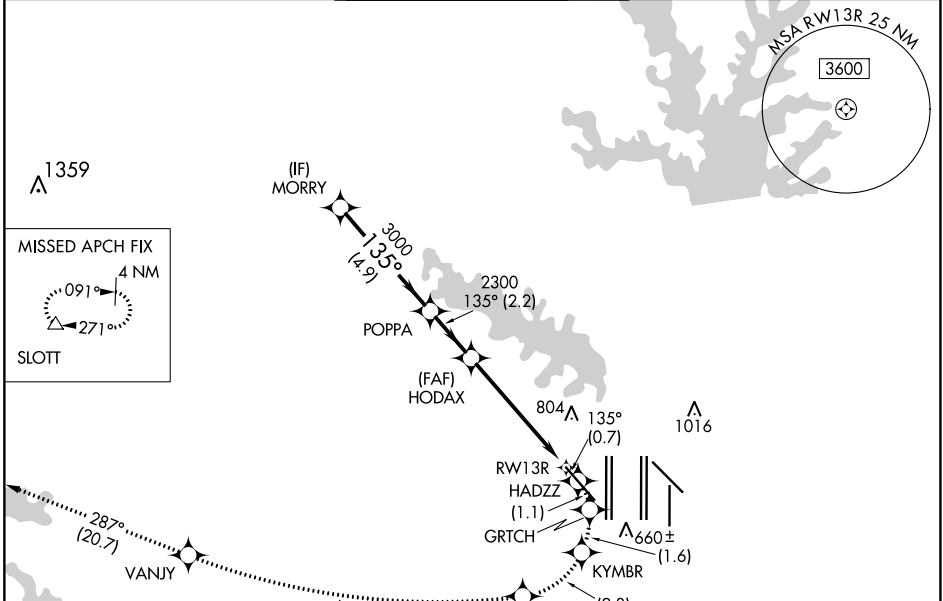
RNP AR APCH. RF required.

**▽** For uncompensated Baro-VNAV systems, procedure NA below -6°C or above 54°C. Missed approach requires RNP less than 1.0.

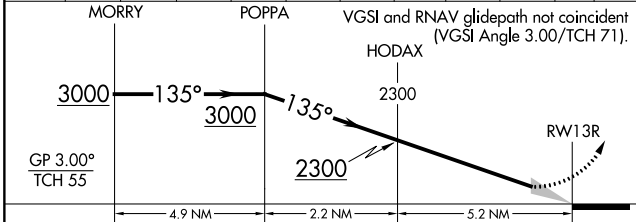
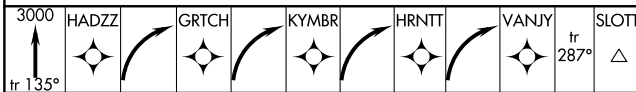
MALSR 

MISSED APPROACH: (Do not exceed 185K until HRNTT) Climb to 3000 on the RNAV missed approach route to SLOTT and hold.

D-ATIS	LONE STAR APP CON	DFW TOWER	GND CON	CLNC DEL	CPDLC
ARR <b>123.775</b>	<b>133.15 118.1</b>	<b>126.55 127.5</b> EAST	<b>121.65 121.8</b> EAST	<b>128.25</b>	
DEP <b>135.925</b>		<b>124.15 134.9</b> WEST	<b>121.85</b> WEST		



ELEV	606	TDZE	591
<b>D</b>			



CATEGORY	A	B	C	D
RNP 0.30 DA		1041/45	450 (500-%)	

## AUTHORIZATION REQUIRED

ELEV 606 **D** TDZE 591

HIRL all Rwys  
REIL Rwys 13L and 31L  
TDZ/CL all Rwys except 13L and 31L

SC-2, 26 DEC 2024 to 23 JAN 2025

SC-2, 26 DEC 2024 to 23 JAN 2025