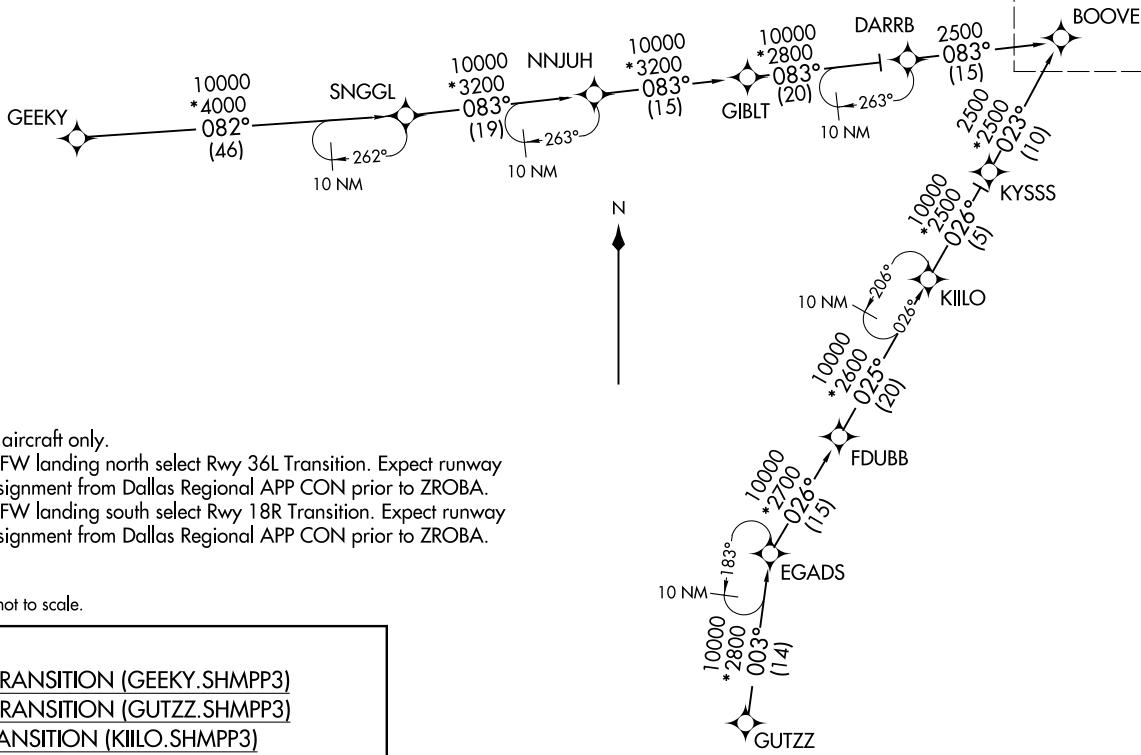


RNAV 1 - DME/DME/IRU or GPS.  
RADAR required.

See following page  
for arrival routes.



NOTE: Jet aircraft only.  
 NOTE: KDFW landing north select Rwy 36L Transition. Expect runway assignment from Dallas Regional APP CON prior to ZROBA.  
 NOTE: KDFW landing south select Rwy 18R Transition. Expect runway assignment from Dallas Regional APP CON prior to ZROBA.

NOTE: Chart not to scale.

- GEEKY TRANSITION (GEEKY.SHMPP3)
- GUTZZ TRANSITION (GUTZZ.SHMPP3)
- KILO TRANSITION (KILO.SHMPP3)
- SNGGL TRANSITION (SNGGL.SHMPP3)

(CONTINUED ON FOLLOWING PAGE)

SHMPP THREE ARRIVAL (RNAV) Transition Routes  
 (BOOVE.SHMPP3) 11 JUL24  
 DALLAS-FORT WORTH, TEXAS  
 DALLAS-FORT WORTH INTL (DFW)

(BOOVE.SHMPP3) 24305  
 SHMPP THREE ARRIVAL (RNAV) Transition Routes  
 AL-6039 (FAA)  
 DALLAS-FORT WORTH INTL (DFW)  
 DALLAS-FORT WORTH, TEXAS

(BOOVE.SHMPP3) 24305

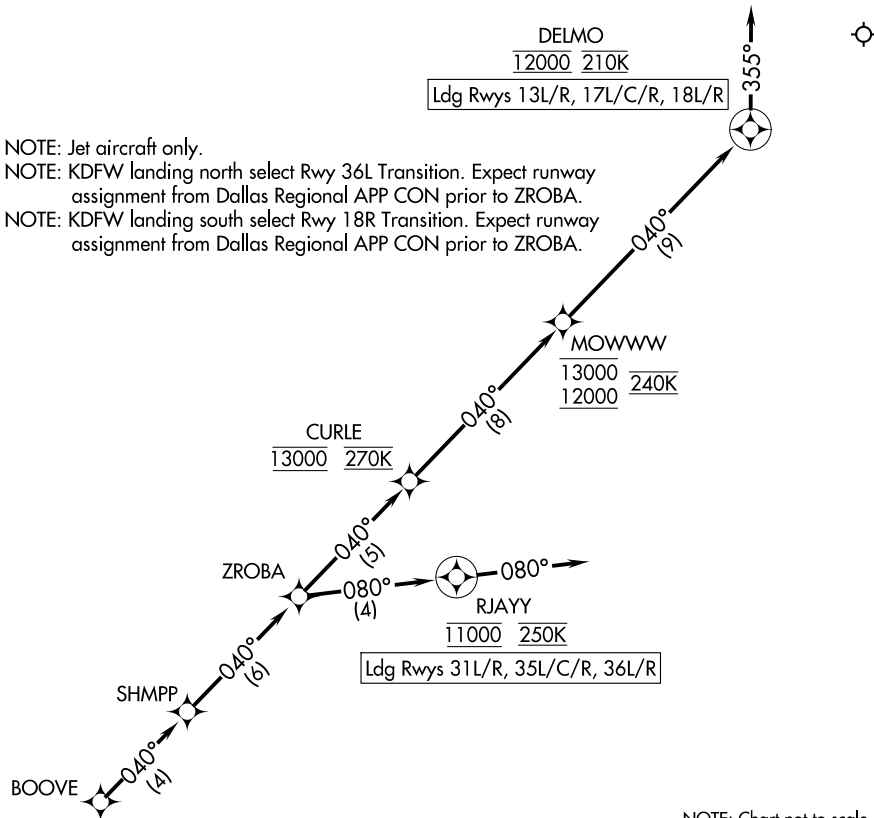
AL-6039 (FAA)

# SHMPP THREE ARRIVAL (RNAV) Arrival Routes

DALLAS-FORT WORTH INTL (DFW)  
DALLAS-FORT WORTH, TEXAS

LONE STAR APP CON  
119.875 284.65  
D-ATIS ARR  
123.775

RNAV 1 - DME/DME/IRU or GPS.  
RADAR required.



SC-2, 26 DEC 2024 to 23 JAN 2025

SC-2, 26 DEC 2024 to 23 JAN 2025

## ARRIVAL ROUTE DESCRIPTION

From BOOVE on track 040° to SHMPP, then on track 040° to ZROBA.

LANDING RUNWAYS 13L/R, 17L/C/R, 18L/R: From ZROBA on track 040° to cross CURLE at 13000 and at 270K, then on track 040° to cross MOWWW between 12000 and 13000 and at 240K, then on track 040° to cross DELMO at 12000 and at 210K, then on track 355°. Expect RADAR vectors to final approach course.

LANDING RUNWAYS 31L/R, 35L/C/R, 36L/R: From ZROBA on track 080° to cross RJAYY at 11000 and at 250K, then on track 080°. Expect RADAR vectors to final approach course.

# SHMPP THREE ARRIVAL (RNAV) Arrival Routes

DALLAS-FORT WORTH, TEXAS  
DALLAS-FORT WORTH INTL (DFW)

(BOOVE.SHMPP3) 11JUL24