

LONE STAR DEP CON
118.55 290.35
D-ATIS DEP
135.925
CLNC DEL
128.25
CPDLC
GND CON
121.65 121.8 (EAST)
121.85 (WEST)
DFW TOWER
126.55 127.5 (EAST)
124.15 134.9 (WEST)

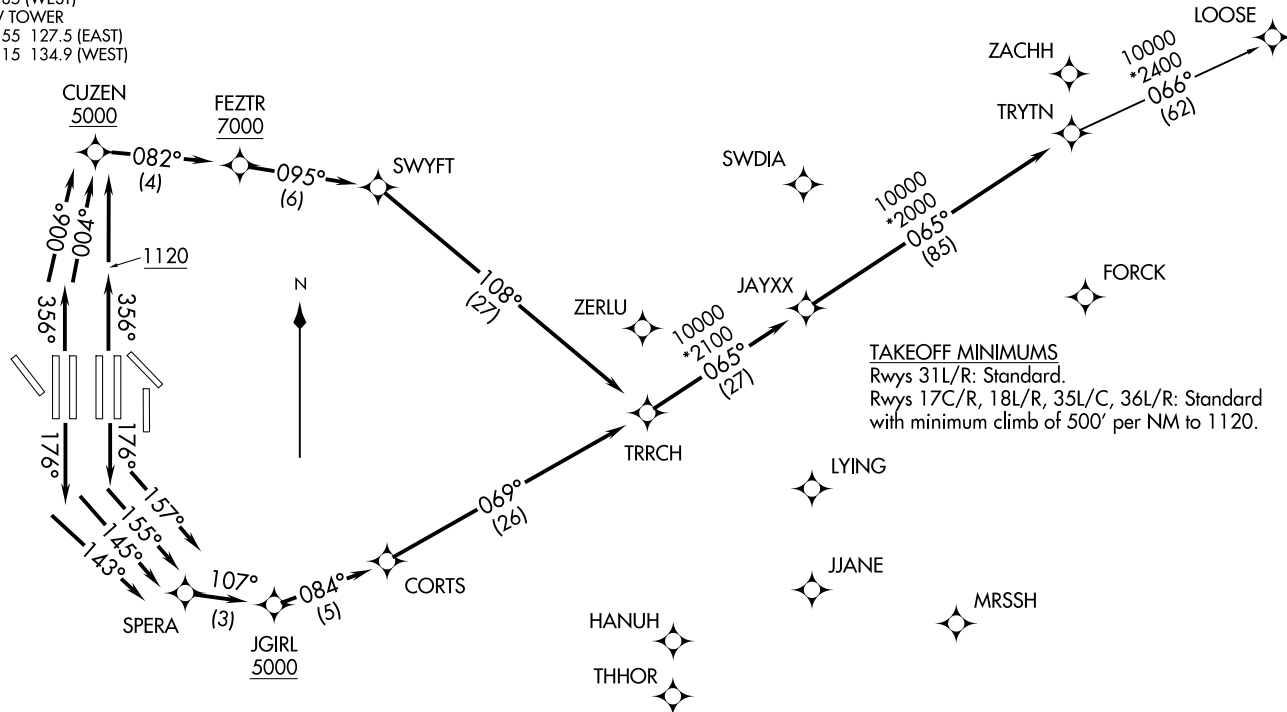
RNAV 1 - DME/DME/IRU or GPS.
RADAR required.

TOP ALTITUDE:
RWYS 31L/R: 5000
RWYS 17C/R, 18L/R,
35L/C, 36L/R: 10000

NOTE: For use by turbojet aircraft only.
NOTE: Non-RNAV capable props: file and expect DALLAS or GARLAND DEPARTURE.
NOTE: RNAV capable props: file and expect the KUSSO RNAV DEPARTURE.

TRYTN FOUR DEPARTURE (RNAV)
(TRYTN4, TRYTN) 08SEP22

DALLAS-FORT WORTH, TEXAS
DALLAS-FORT WORTH INTL (DFW)



TAKEOFF MINIMUMS
Rwys 31L/R: Standard.
Rwys 17C/R, 18L/R, 35L/C, 36L/R: Standard
with minimum climb of 500' per NM to 1120.

NOTE: Chart not to scale.

(CONTINUED ON FOLLOWING PAGE)

(TRYTN4, TRYTN) 24305
TRYTN FOUR DEPARTURE (RNAV)

AT-6039 (FAA)
DALLAS-FORT WORTH INTL (DFW)
DALLAS-FORT WORTH, TEXAS



DEPARTURE ROUTE DESCRIPTION

TAKEOFF RWY 17C: Climb on heading 176° to intercept course 157° to SPERA, then on track 107° to cross JGIRL at or above 5000, then on track 084° to CORTS, then on track 069° to TRRCH, thence. . . .

TAKEOFF RWY 17R: Climb on heading 176° to intercept course 155° to SPERA, then on track 107° to cross JGIRL at or above 5000, then on track 084° to CORTS, then on track 069° to TRRCH, thence. . . .

TAKEOFF RWY 18L: Climb on heading 176° to intercept course 145° to SPERA, then on track 107° to cross JGIRL at or above 5000, then on track 084° to CORTS, then on track 069° to TRRCH, thence. . . .

TAKEOFF RWY 18R: Climb on heading 176° to intercept course 143° to SPERA, then on track 107° to cross JGIRL at or above 5000, then on track 084° to CORTS, then on track 069° to TRRCH, thence. . . .

TAKEOFF RWYS 35L/C: Climb on heading 356° to 1120, then direct to cross CUZEN at or above 5000, then on track 082° to cross FEZTR at or above 7000, then on track 095° to SWYFT, then on track 108° to TRRCH, thence. . . .

TAKEOFF RWY 36L: Climb on heading 356° to intercept course 006° to cross CUZEN at or above 5000, then on track 082° to cross FEZTR at or above 7000, then on track 095° to SWYFT, then on track 108° to TRRCH, thence. . . .

TAKEOFF RWY 36R: Climb on heading 356° to intercept course 004° to cross CUZEN at or above 5000, then on track 082° to cross FEZTR at or above 7000, then on track 095° to SWYFT, then on track 108° to TRRCH, thence. . . .

. . . on track 065° to JAYXX, then on track 065° to TRYTN, then on (transition) maintain 10000. Expect filed altitude 10 minutes after departure.

TAKEOFF RWYS 31L/R: Climb on heading assigned by ATC, expect RADAR vectors to TRRCH, thence. . . .

. . . on track 065° to JAYXX, then on track 065° to TRYTN, then on (transition) maintain 5000. Expect filed altitude 10 minutes after departure.

LOOSE TRANSITION (TRYTN4.LOOSE)

SC-2, 26 DEC 2024 to 23 JAN 2025

SC-2, 26 DEC 2024 to 23 JAN 2025