

WILBR NINE ARRIVAL
(WILBR: WILBR9) 11 JUL24

Transition Routes

DALLAS-FORT WORTH, TEXAS
DALLAS-FORT WORTH INTL (DFW)

LONE STAR APP CON
125.025 263.025
D-ATIS ARR
123.775



ARDMORE
116.7 ADM
Chan 114

NOTE: RADAR required.
NOTE: DME required.

BONHAM
114.6 BYP
Chan 93

Parachute Jumping Area for
Trenton, Tri-County Air Estates

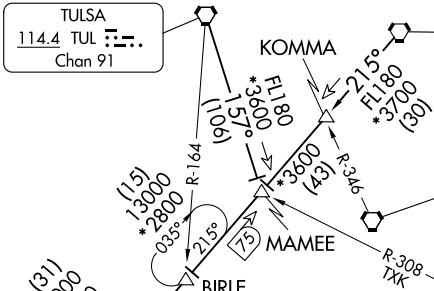
See following page for
arrival route.

TULSA
114.4 TUL
Chan 91

FORT SMITH
110.4 FSM
Chan 41

LITTLE ROCK
113.9 LIT
Chan 86

RICH MOUNTAIN
113.5 PGO
Chan 82



RICH MOUNTAIN
113.5 PGO
Chan 82

MEEOW
FL180 247° *300 (83)
FL180 286° *220 (56)

BIRLE
5000 2200 *035° (31)
5000 2100 *215° (29)

GAATZ
5000 2100 *215° (29)
5000 2200 *222° (5)

ROBEY
5000 2100 *2100 (20)
5000 2100 *2100 (17)

HAKIN
7000 2200 *2200 (3)
5000 2100 *2100 (28)

GLOVE
5000 2100 *2100 (22)
5000 2100 *2100 (22)

TEXARKANA
116.3 TXK
Chan 110

EL DORADO
115.5 ELD
Chan 102

PARIS
113.6 PRX
Chan 83

GREGG COUNTY
112.9 GGG
Chan 76

COWBOY
116.2 CVE
Chan 109

(CONTINUED ON FOLLOWING PAGE)

NOTE: Chart not to scale.

(WILBR: WILBR9) 24305
WILBR NINE ARRIVAL

Transition Routes

DALLAS-FORT WORTH INTL (DFW)
DALLAS-FORT WORTH, TEXAS

AL-6039 (FAA)

WILBR NINE ARRIVAL
(WILBR, WILBR9) 11 JUL 24

Arrival Routes

DALLAS-FORT WORTH, TEXAS
DALLAS-FORT WORTH INTL (DFW)

LONE STAR APP CON
125.025 263.025
D-ATIS ARR
123.775

NOTE: RADAR required.
NOTE: DME required.



ARDMORE
116.7 ADM
Chan 114

BOWIE
117.15 UKW
Chan 118 (Y)

MAVERICK
113.1 TTT
Chan 78

Parachute Jumping Area
for Trenton, Tri-County Air Estates

114.6 Byp
Chan 93

BRDJE
JET AIRCRAFT LANDING NORTH:
280K
JET AIRCRAFT LANDING SOUTH:
Expect 11000 250K

PERSN
JET AIRCRAFT LANDING NORTH:
270K

FUNKY
JET AIRCRAFT LANDING NORTH:
Expect 11000 240K

TOWNN
JET AIRCRAFT LANDING NORTH:
Expect 11000 210K

Note: Chart not to scale

(CONTINUED ON FOLLOWING PAGE)

(WILBR, WILBR9) 24305
WILBR NINE ARRIVAL

Arrival Routes
AL-6039 (FAA)

DALLAS-FORT WORTH INTL (DFW)
DALLAS-FORT WORTH, TEXAS

WILBR NINE ARRIVAL

ARRIVAL ROUTE DESCRIPTION

BONHAM TRANSITION (BYP.WILBR9): From over BYP VORTAC on BYP R-196 to WILBR. Thence . . .

FORT SMITH TRANSITION (FSM.WILBR9): From over FSM VORTAC on FSM R-215 to MAMEE, then on BYP R-035 to BYP VORTAC, then on BYP R-196 to WILBR. Thence . . .

LITTLE ROCK TRANSITION (LIT.WILBR9): From over LIT VORTAC on LIT R-247 to MEEOW, then on LIT R-247 and BYP R-064 to GLOVE, then on BYP R-064 to DECAP, then on TTT R-042 to WILBR. Thence . . .

PARIS TRANSITION (PRX.WILBR9): From over PRX VOR/DME on PRX R-263 and BYP R-083 to MONTE, then on BYP R-083 to OKUCI, then on TTT R-042 to WILBR. Thence . . .

TEXARKANA TRANSITION (TXK.WILBR9): From over TXK VORTAC on TXK R-286 to GLOVE, then on BYP R-064 to DECAP, then on TTT R-042 to WILBR. Thence . . .

TULSA TRANSITION (TUL.WILBR9): From over TUL VORTAC on TUL R-157 to MAMEE, then on BYP R-035 to BYP VORTAC, then on BYP R-196 to WILBR. Thence . . .

. . . . from over WILBR on TTT R-042

ALL AIRCRAFT LANDING SOUTH: To BRDJE depart heading 255°, expect RADAR vectors for base leg.

JETS LANDING NORTH: To BRDJE, to KNACK, to PERSN, to FUNKY, to TOWNNN, then depart heading 175°, expect RADAR vectors.

PROP AIRCRAFT LANDING NORTH: To BRDJE, to KNACK, to PERSN, then depart heading 190°, expect RADAR vectors.

SC-2, 26 DEC 2024 to 23 JAN 2025

SC-2, 26 DEC 2024 to 23 JAN 2025