

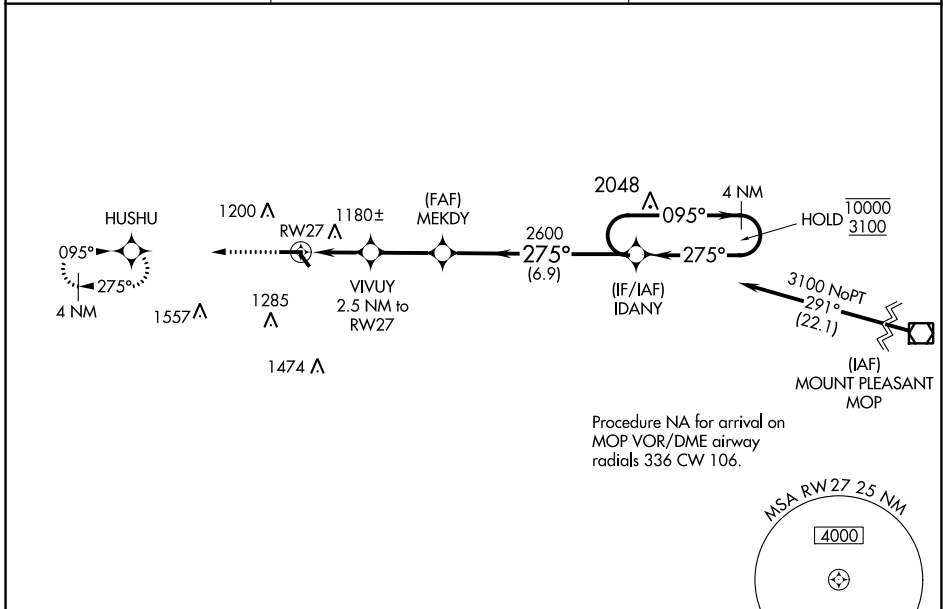
WAAS CH <b>56238</b> <b>W27A</b>	APP CRS <b>275°</b>	Rwy Idg TDZE Apt Elev	<b>4300</b> <b>976</b> <b>990</b>
--	------------------------	-----------------------------	---

# RNAV (GPS) RWY 27

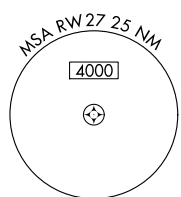
ROBEN-HOOD (RQB)

RNP APCH - GPS.		MISSED APPROACH: Climb to 2900 direct HUSHU and hold.
<p><b>⚠</b> Circling Rwy 32 NA at night. For uncompensated Baro-VNAV systems, LNAV/VNAV NA below -16°C or above 54°C.</p>		

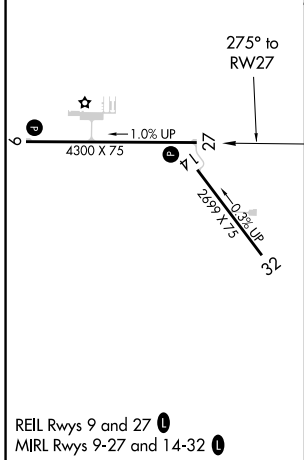
AWOS-3P <b>125.875</b>	MINNEAPOLIS CENTER <b>120.85 322.35</b>	UNICOM <b>122.8 (CTAF)</b>
---------------------------	--	-------------------------------



Procedure NA for arrival on MOP VOR/DME airway radials 336 CW 106.



ELEV 990	TDZE 976
----------	----------



2900	HUSHU	VGSI and RNAV glidepath not coincident (VGSI Angle 3.08/TCH 25).	4 NM Holding Pattern	
	VIVUY	MEKDY	IDANY	
	2.5 NM to RWY 27	2600	10000	
	1.4 NM to RWY 27	275°	3100	
	1780	2600	GP 3.00° TCH 40	
	1.4	1.1	2.6 NM	
			6.9 NM	
CATEGORY	A	B	C	D
LPV DA	1176-1		200 (200-1)	
LNAV/VNAV DA	1540-1½		564 (600-1½)	
LNAV MDA	1440-1	464 (500-1)	1440-1¾	464 (500-1¾)
<b>C</b> CIRCLING	1500-1 510 (600-1)	1560-1 570 (600-1)	1700-2 710 (800-2)	1860-2¾ 870 (900-2¾)