

WAAS CH 82041 W10A	APP CRS 096°	Rwy Idg TDZE Apt Elev	4201 1089 1090
--	------------------------	-----------------------------	---

RNAV (GPS) RWY 10

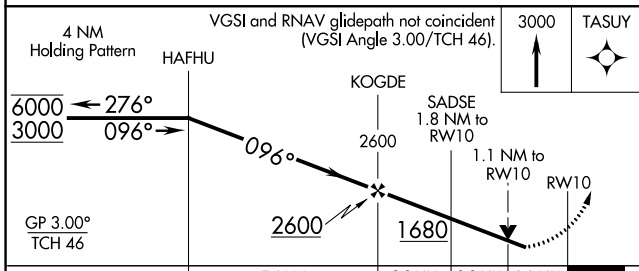
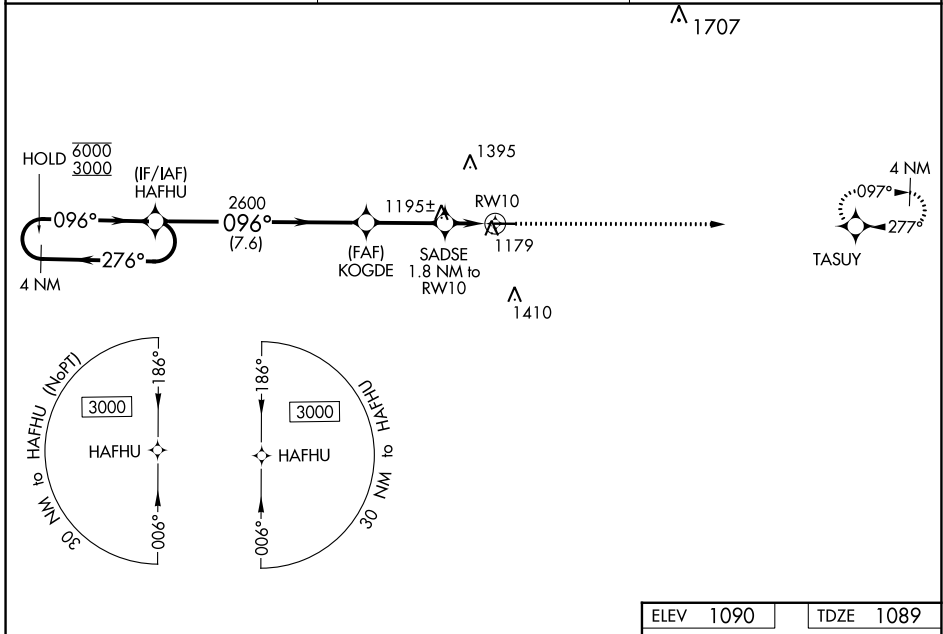
NEW CASTLE HENRY COUNTY MARLATT FLD (UWL)

RNP APCH - GPS.

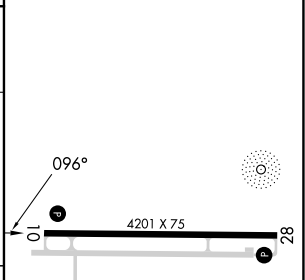
⚠ Rwy 10 helicopter visibility reduction below $\frac{3}{4}$ SM NA. For uncompensated Baro-VNAV systems, LNAV/VNAV NA below -17°C or above 54°C. Baro-VNAV and VDP NA when using AID altimeter setting. When local altimeter setting not received, use Anderson altimeter setting; increase LPV DA to 1408 feet; increase LNAV/VNAV DA to 1424 feet; increase all MDAs 80 feet, LNAV visibility Cat C/D $\frac{3}{8}$ SM, and Circling visibility Cat C/D $\frac{1}{4}$ SM.

MISSED APPROACH: Climb to 3000 direct TASUY and hold.

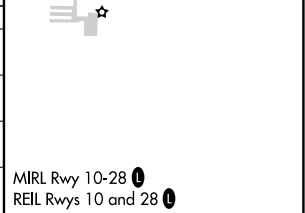
AWOS-3 132.375	INDIANAPOLIS APP CON 135.45 317.8	UNICOM 123.05 (CTAF) 0
--------------------------	---	----------------------------------



ELEV 1090	TDZE 1089
-----------	-----------



CATEGORY	A	B	C	D
LPV DA		1339-1	250 (300-1)	
LNAV/VNAV DA		1355-1	266 (300-1)	
LNAV MDA		1460-1	371 (400-1)	
C CIRCLING	1520-1 430 (500-1)	1540-1 450 (500-1)	1720-1 $\frac{3}{4}$ 630 (700-1 $\frac{3}{4}$)	1720-2 630 (700-2)



RNAV (GPS) RWY 10

EC-2, 26 DEC 2024 to 23 JAN 2025

EC-2, 26 DEC 2024 to 23 JAN 2025