

WAAS CH 42818 W25A	APP CRS 246°	Rwy Idg 5003 TDZE 147 Apt Elev 147
----------------------------------------	------------------------	---------------------------------------------------------------

RNAV (GPS) RWY 25

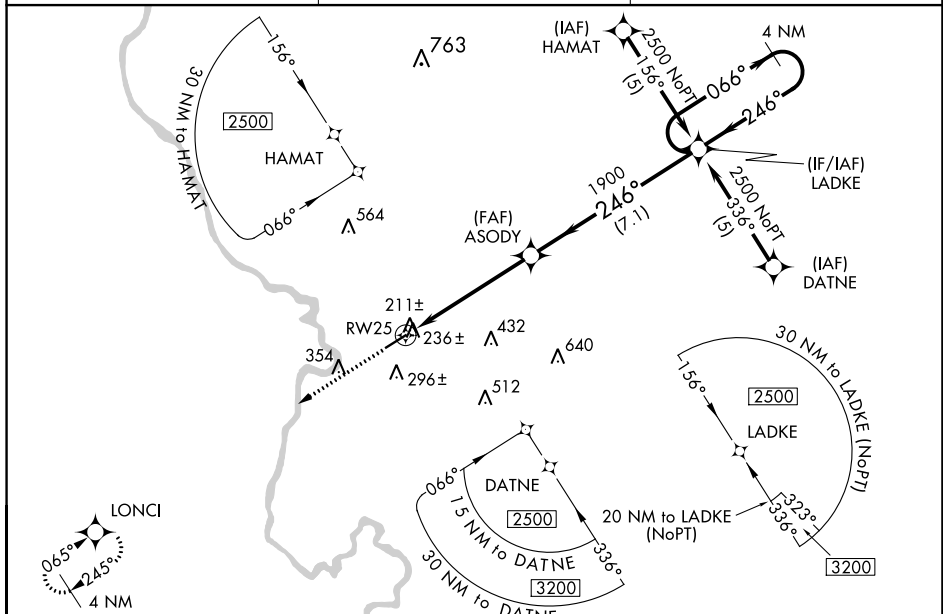
MARLBORO COUNTY JETPORT/H E AVENT FLD (BBP)

RNP APCH.

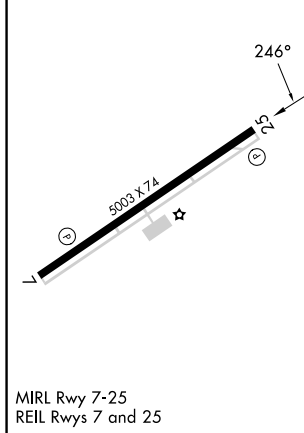
▼ Baro-VNAV NA when using Florence altimeter setting. For uncompensated Baro-VNAV systems, LNAV/VNAV NA below -15°C or above 47°C. Rwy 25 helicopter visibility reduction below 3/4 SM NA. When local altimeter setting not received, use Florence altimeter setting and increase all DA 61 feet and MDA 80 feet. Increase LPV all Cats, and LNAV Cat C and D visibility 1/4 mile.

MISSED APPROACH: Climb to 2500 direct LONCI and hold.

AWOS-3PT 123.825	FLORENCE APP CON ★ 118.6 341.7	UNICOM 122.8 (CTAF)
----------------------------	------------------------------------------	-------------------------------



ELEV 147	TDZE 147
----------	----------



2500	LONCI	VGSI and descent angles not coincident (VGSI Angle 3.00/TCH 40).		4 NM Holding Pattern
ASODY		LADKE	066°	2500
RW25		1900	← 246°	GP 3.00° TCH 52
5.3 NM		7.1 NM		
CATEGORY	A	B	C	D
LPV DA	441-1		294 (300-1)	
LNAV/VNAV DA	621-1 ^{3/4}		474 (500-1 ^{3/4})	
LNAV MDA	680-1	533 (600-1)	680-1 ^{1/2} 533 (600-1 ^{1/2})	680-1 ^{3/4} 533 (600-1 ^{3/4})

SE-2, 26 DEC 2024 to 23 JAN 2025

SE-2, 26 DEC 2024 to 23 JAN 2025