

|                           |                        |                             |                                     |
|---------------------------|------------------------|-----------------------------|-------------------------------------|
| NDB/DME MAJ<br><b>316</b> | APP CRS<br><b>249°</b> | Rwy ldg<br>TDZE<br>Apt Elev | <b>7913</b><br><b>7</b><br><b>7</b> |
| Chan <b>114 (116.7)</b>   |                        |                             |                                     |

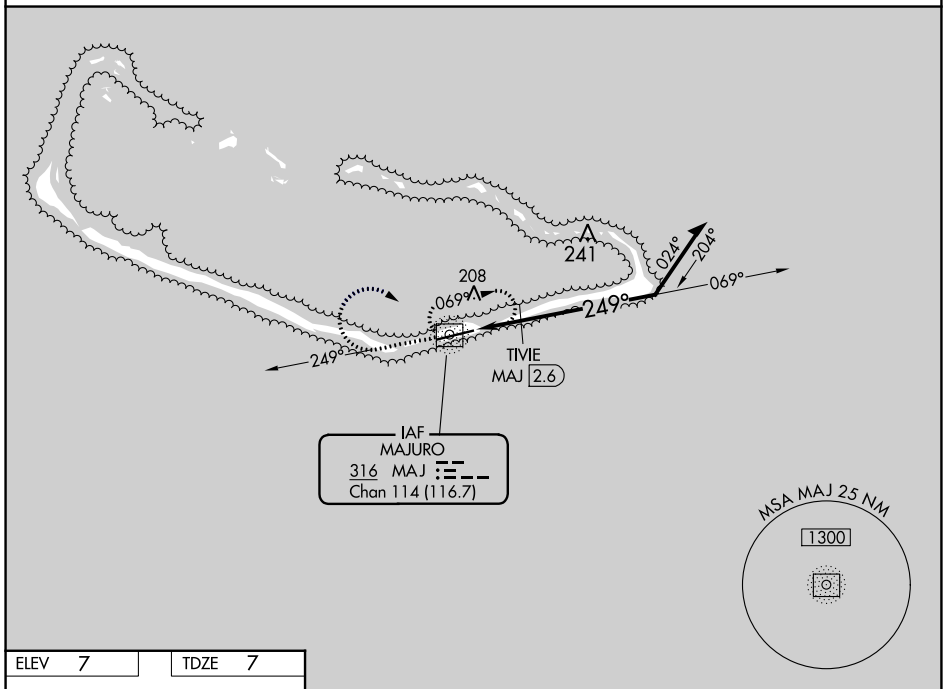
# NDB RWY 25

AMATA KABUA INTL (MAJ)(PKMJ)

**⚠ NA** Rwy 25 helicopter visibility reduction below 3/4 SM NA. Obtain local altimeter setting on CTAF; when not received, procedure NA. Uncontrolled airspace below 5500.

**MISSED APPROACH:** Climb to 1000 on MAJ NDB/DME bearing 249° then climbing right turn to 1300 direct MAJ NDB/DME and hold.

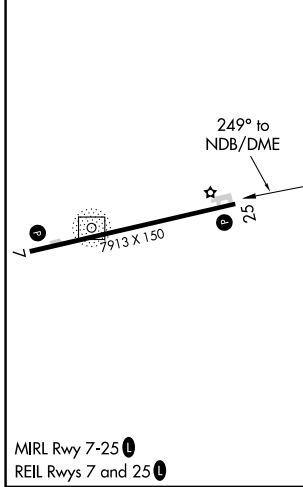
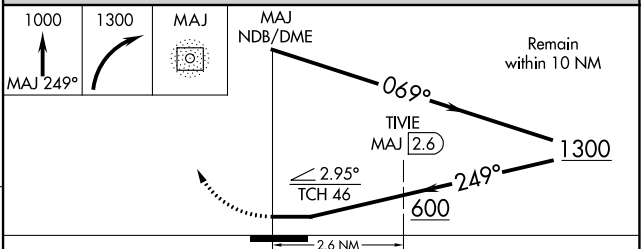
MAJURO RADIO  
**123.6 (CTAF)**



PAC, 26 DEC 2024 to 20 FEB 2025

PAC, 26 DEC 2024 to 20 FEB 2025

|        |        |
|--------|--------|
| ELEV 7 | TDZE 7 |
|--------|--------|



| CATEGORY                          | A     | B           | C                      | D                    |
|-----------------------------------|-------|-------------|------------------------|----------------------|
| S-25                              | 600-1 | 593 (600-1) | 600-1¾                 | 593 (600-1¾)         |
| <b>C</b> CIRCLING                 | 600-1 | 593 (600-1) | 600-1¾<br>593 (600-1¾) | 600-2<br>593 (600-2) |
| TIVIE FIX MINIMUMS (DME REQUIRED) |       |             |                        |                      |
| S-25                              | 520-1 | 513 (600-1) | 520-1¾                 | 513 (600-1¾)         |
| <b>C</b> CIRCLING                 | 520-1 | 513 (600-1) | 520-1½<br>513 (600-1½) | 560-2<br>553 (600-2) |