

NDB/DME MAJ <b>316</b>	APP CRS <b>062°</b>	Rwy ldg TDZE Apt Elev	<b>7913</b> <b>7</b> <b>7</b>
Chan <b>114 (116.7)</b>			

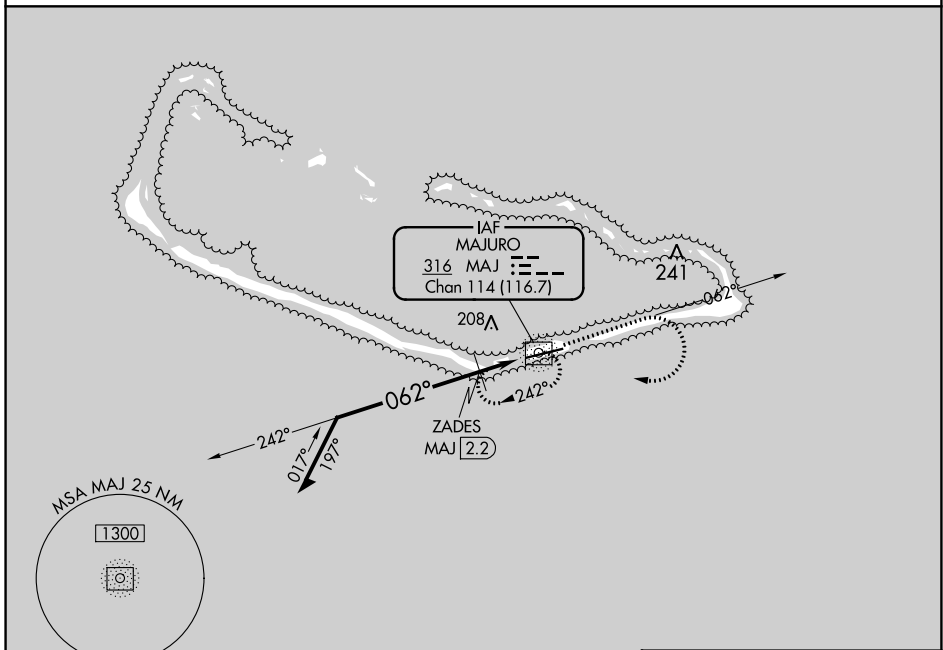
# NDB RWY 7

AMATA KABUA INTL (MAJ)(PKMJ)

**⚠ NA** Rwy 7 helicopter visibility reduction below 3/4 SM NA. Obtain local altimeter setting on CTAF; when not received, procedure NA. Uncontrolled airspace below 5500.

**MISSED APPROACH:** Climb to 1000 on MAJ NDB/DME bearing 062° then climbing right turn to 1300 direct MAJ NDB/DME and hold.

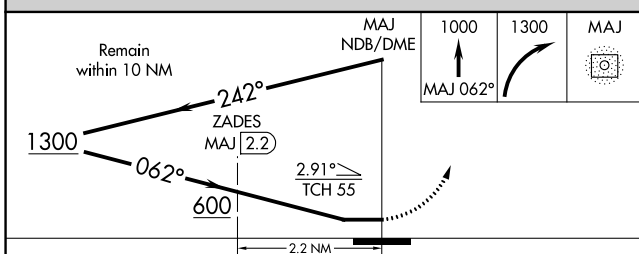
MAJURO RADIO  
**123.6 (CTAF)** **📻**



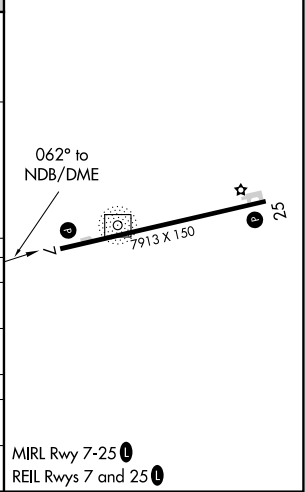
PAC, 26 DEC 2024 to 20 FEB 2025

PAC, 26 DEC 2024 to 20 FEB 2025

ELEV 7	TDZE 7
--------	--------



CATEGORY	A	B	C	D
S-7	600-1	593 (600-1)	600-1 <sup>3</sup> / <sub>4</sub>	593 (600-1 <sup>3</sup> / <sub>4</sub> )
<b>C</b> CIRCLING	600-1	593 (600-1)	600-1 <sup>3</sup> / <sub>4</sub> 593 (600-1 <sup>3</sup> / <sub>4</sub> )	600-2 593 (600-2)
<b>ZADES FIX MINIMUMS (DME REQUIRED)</b>				
S-7	520-1	513 (600-1)	520-1 <sup>3</sup> / <sub>8</sub>	513 (600-1 <sup>3</sup> / <sub>8</sub> )
<b>C</b> CIRCLING	520-1	513 (600-1)	520-1 <sup>1</sup> / <sub>2</sub> 513 (600-1 <sup>1</sup> / <sub>2</sub> )	560-2 553 (600-2)



MIRL Rwy 7-25 **📻**  
REIL Rws 7 and 25 **📻**