

RED OAK, IOWA

AL-6051 (FAA)

21084

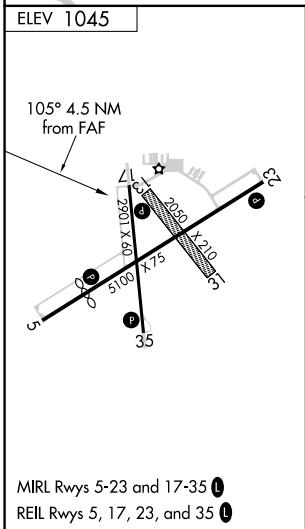
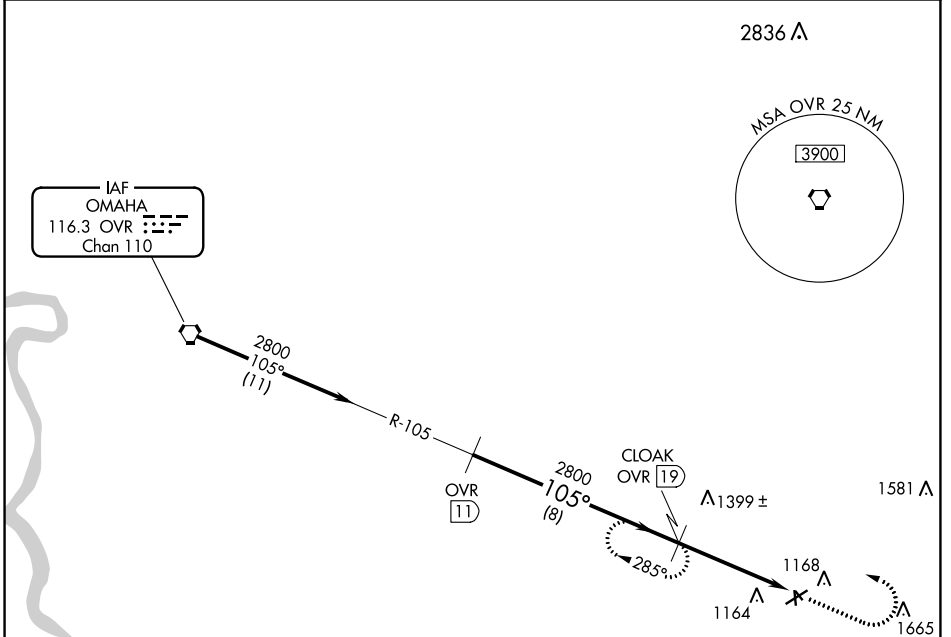
VORTAC OVR <b>116.3</b> Chan <b>110</b>	APP CRS <b>105°</b>	Rwy Idg TDZE Apt Elev	<b>N/A</b> <b>N/A</b> <b>1045</b>
---	------------------------	-----------------------------	---

# VOR/DME-A

RED OAK MUNI (RDK)

▼ Circling NA to Rwys 13 and 31.
 MISSED APPROACH: Climb to 2800 then left turn via OVR R-105 to CLOAK/19 DME and hold.

AWOS-3P <b>123.925</b>	OMAHA APP CON <b>124.5 263.0</b>	UNICOM <b>122.8</b> (CTAF) <b>0</b>
---------------------------	-------------------------------------	--



Procedure Turn NA	OVR <b>11</b>	CLOAK OVR <b>19</b>	2800 ↑ OVR R-105	CLOAK OVR <b>19</b>
	2800	2800		OVR <b>23.5</b>
	8 NM		4.5 NM	
CATEGORY	A	B	C	D
CIRCLING	1660-1 615 (700-1)	1740-1¼ 695 (700-1¼)	NA	

RED OAK, IOWA  
Amdt 5A 25MAR21

41°01'N-95°16'W

## RED OAK MUNI (RDK) VOR/DME-A

NC-3, 26 DEC 2024 to 23 JAN 2025

NC-3, 26 DEC 2024 to 23 JAN 2025