

| | | |
|--|------------------------|---|
| LOC/DME I-ECH 109.3 Chan 30 | APP CRS 115° | Rwy ldg 7500 TDZE 92 Apt Elev 92 |
|--|------------------------|---|

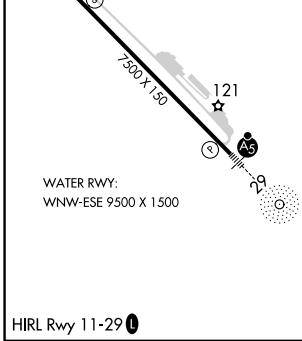
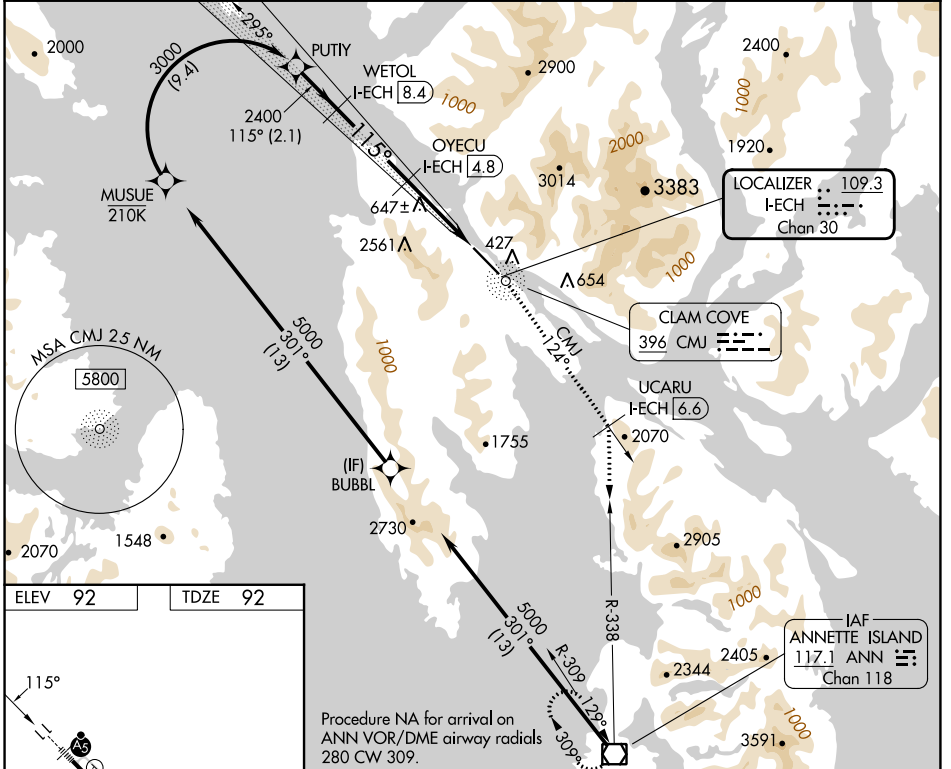
I LS Z or LOC Z RWY 11

KETCHIKAN INTL (KTN)(PAKT)

RNP APCH - GPS, RF.
ADF required. DME required.
⚠ Rwy 11 helicopter visibility reduction below RVR 4000 NA. For inop ALS, increase *S-ILS 11 visibility to RVR 6000.
*RVR 1800 authorized with the use of FD or AP or HUD to DA.

MALSRS
MISSED APPROACH: Climb to 5100 direct CMJ NDB and on CMJ NDB bearing 124° to UCARU/I-ECH 6.6 DME and on ANN VOR/DME R-338 to ANN VOR/DME and hold, continue to climb-in-hold to 5100.
*Missed approach requires minimum climb of 305 feet per NM to 4000; if unable to meet climb gradient, see LOC X RWY 11.
Missed approach requires minimum climb of 235 feet per NM to 4000; if unable to meet climb gradient, see LOC X RWY 11.

| | | |
|-----------------------|--|--|
| AFIS 134.45 | ANCHORAGE CENTER 118.5 284.6 | KETCHIKAN RADIO 123.6 (CTAF) 0 |
|-----------------------|--|--|



Use I-ECH DME when on the localizer course.

| | | | | | |
|-----------|--------------------|-----------------|-----------------|-------------|-----|
| PUTIY | WETOL I-ECH 8.4 | OYECU I-ECH 4.8 | UCARU I-ECH 6.6 | ANN R-338 | ANN |
| 3000 | 2400 | 2400 | 1200 | | |
| 115° | | | | | |
| 2.1 NM | 3.6 NM | 0.8 | 2.6 NM | | |
| CATEGORY | A | B | C | D | |
| S-ILS 11* | 312/24 220 (300-½) | | | | |
| S-LOC 11 | 980/40 | 888 (900-¾) | 980-2 | 888 (900-2) | |

AK, 26 DEC 2024 to 20 FEB 2025

AK, 26 DEC 2024 to 20 FEB 2025