

LOC/DME I-ECH <b>109.3</b> Chan 30	APP CRS <b>115°</b>	Rwy Idg <b>7500</b> TDZE <b>92</b> Apt Elev <b>92</b>
--	------------------------	---

# LOC X RWY 11

KETCHIKAN INTL (KTN)(PAKT)

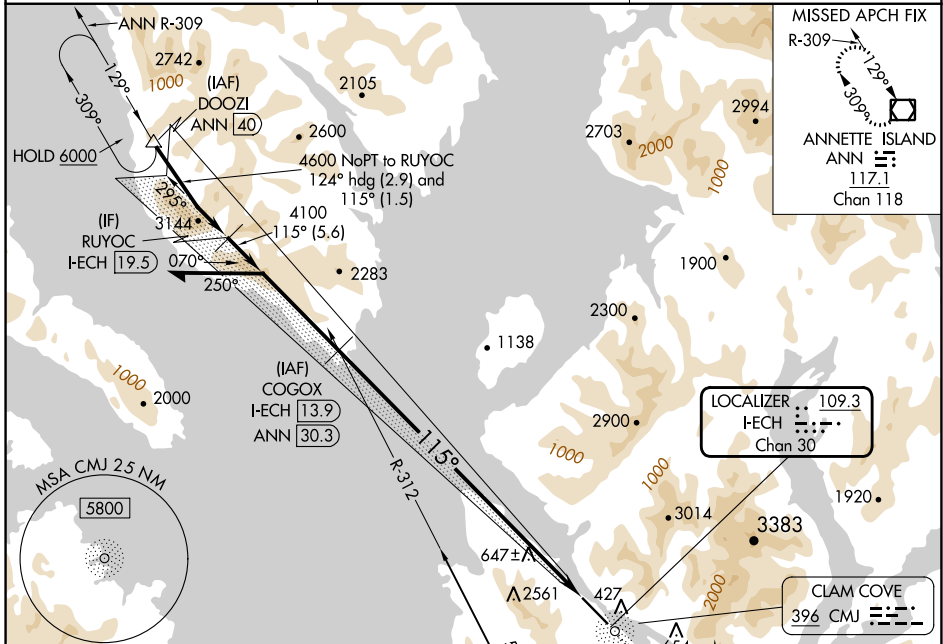
DME required. ADF required.

**⚠** Circling NA at night. Inop table does not apply.  
**⚠** Rwy 11 helicopter visibility reduction below 3/4 SM NA.

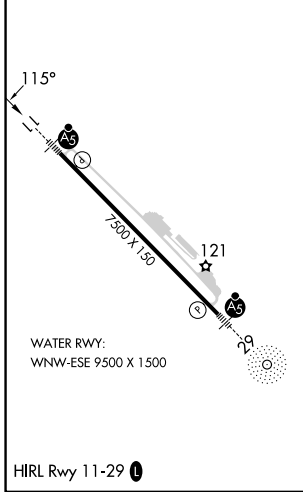
MALSR

MISSED APPROACH: Climb to 5000 direct CMJ NDB then on CMJ NDB bearing 124° to UCARU/I-ECH 6.6 DME and on ANN VOR/DME R-338 to ANN VOR/DME and hold.

AFIS <b>134.45</b>	ANCHORAGE CENTER <b>118.5 284.6</b>	KETCHIKAN RADIO <b>123.6 (CTAF) 0</b>
-----------------------	--	--

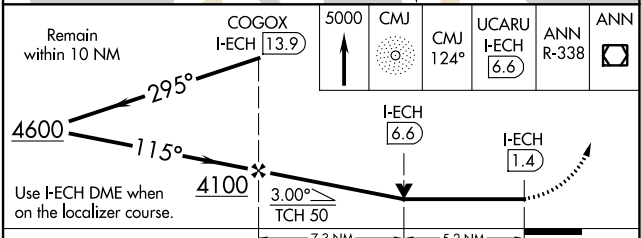


ELEV 92	TDZE 92
---------	---------



Procedure NA for arrival on ANN VOR/DME airway radials 280 CW 309.

ANNETTE ISLAND 117.1 ANN Chan 118



CATEGORY	A	B	C	D
S-11	1780-1¼ 1688 (1700-1¼)	1780-1½ 1688 (1700-1½)	1780-3	1688 (1700-3)
<b>C</b> CIRCLING	2100-1¼ 2008 (2100-1¼)	2640-1½ 2548 (2600-1½)	3020-3 2928 (3000-3)	3300-3 3208 (3300-3)

AK, 26 DEC 2024 to 20 FEB 2025

AK, 26 DEC 2024 to 20 FEB 2025