

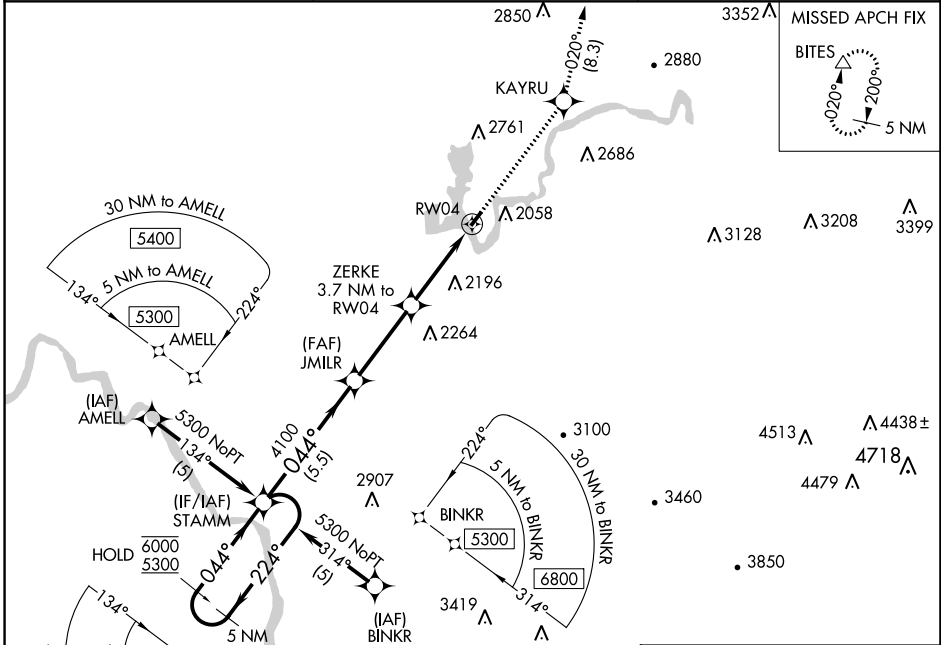
APP CRS	Rwy Idg	NA
044°	TDZE	NA
	Apt Elev	1820

RNAV (GPS)-A

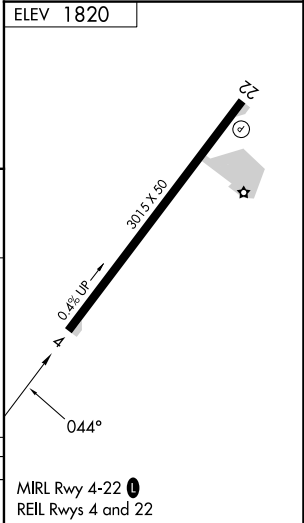
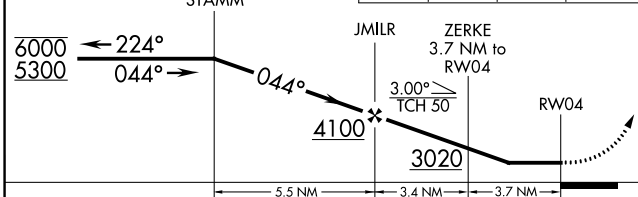
SUMMERSVILLE (SXL)

RNP APCH - GPS.		MISSED APPROACH: Climb to 4500 direct KAYRU and on track 020° to BITES and hold.
▼ NA	Procedure NA at night. Rwy 4 and 22 helicopter visibility reduction below 1 SM NA. Use CRW altimeter setting.	

CRW ASOS 127.6	CHARLESTON APP CON 119.2 269.125	UNICOM 122.8 (CTAF) 0
--------------------------	--	--



5 NM Holding Pattern	4500	KAYRU	tr 020°	BITES
----------------------	------	-------	---------	-------



CATEGORY	A	B	C	D
CIRCLING	2640-1¼ 820 (900-1¼)	3020-1½ 1200 (1200-1½)	NA	

MIRL Rwy 4-22 **0**
REIL Rws 4 and 22

NE-4, 26 DEC 2024 to 23 JAN 2025

NE-4, 26 DEC 2024 to 23 JAN 2025