

WAAS CH 53332 W13A	APP CRS 134°	Rwy Idg 4602 TDZE 1130 Apt Elev 1137
--	------------------------	---

RNAV (GPS) RWY 13

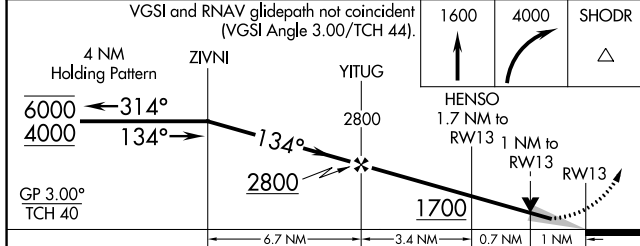
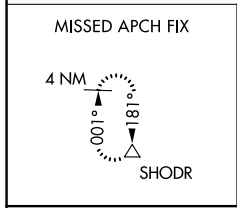
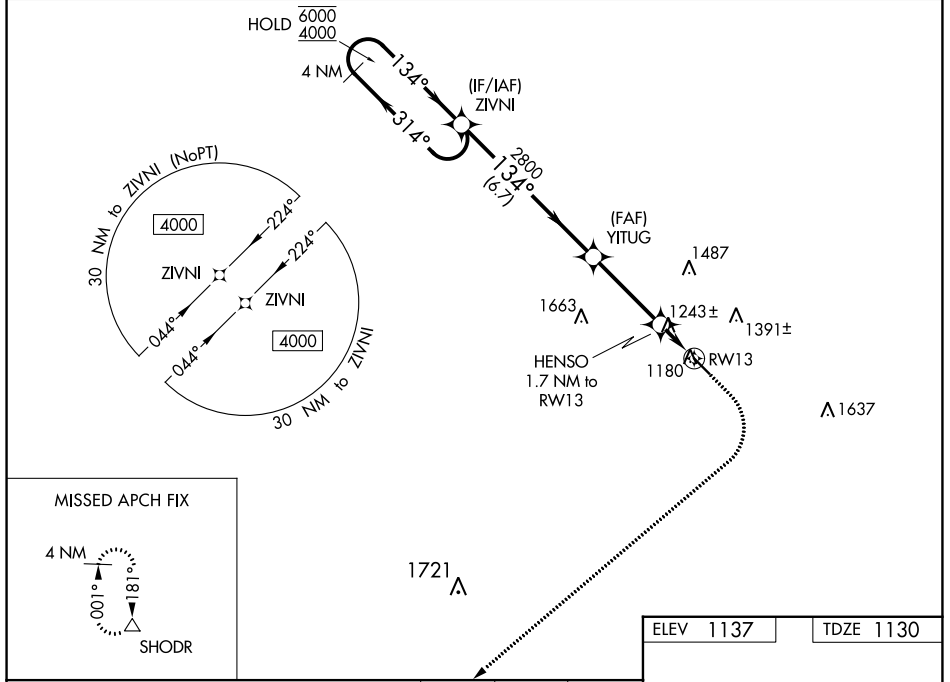
IOWA FALLS MUNI (IF A)

RNP APCH - GPS.

⚠ For uncompensated Baro-VNAV systems, LNAV/VNAV NA below -17°C or above 54°C. Circling Rwy 31 NA at night.

MISSED APPROACH: Climb to 1600 then climbing right turn to 4000 direct SHODR and hold.

AWOS-3 120.425	WATERLOO APP CON * 118.9	UNICOM 122.8 (CTAF) 0
--------------------------	------------------------------------	--



ELEV 1137	TDZE 1130
-----------	-----------

134°

4602 X 75

31

MIRL Rwy 13-31 **0**

REIL Rws 13 and 31 **0**

CATEGORY	A	B	C	D
LPV DA		1380-1	250 (300-1)	
LNAV/VNAV DA		1395-1	265 (300-1)	
LNAV MDA		1500-1	370 (400-1)	
C CIRCLING	1540-1 403 (500-1)	1620-1 483 (500-1)	1760-1¾ 623 (700-1¾)	1800-2 663 (700-2)

NC-3, 26 DEC 2024 to 23 JAN 2025

NC-3, 26 DEC 2024 to 23 JAN 2025