

(ADELL7.ADELL) 24305

AL-6063 (FAA)

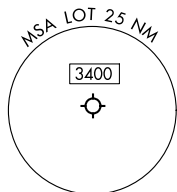
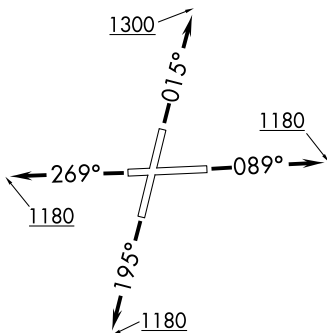
LEWIS UNIVERSITY (LOT)
CHICAGO/ROMEOVILLE, ILLINOIS

ADELL SEVEN DEPARTURE (RNAV)

CHICAGO DEP CON
119.35 354.075
D-ATIS
126.675
GND CON
120.425
LEWIS TOWER *
134.8 (CTAF)

RNAV 1 - DME/DME/IRU or GPS.
RADAR required. RADAR required for non-GPS equipped aircraft.

**TOP ALTITUDE:
3000**

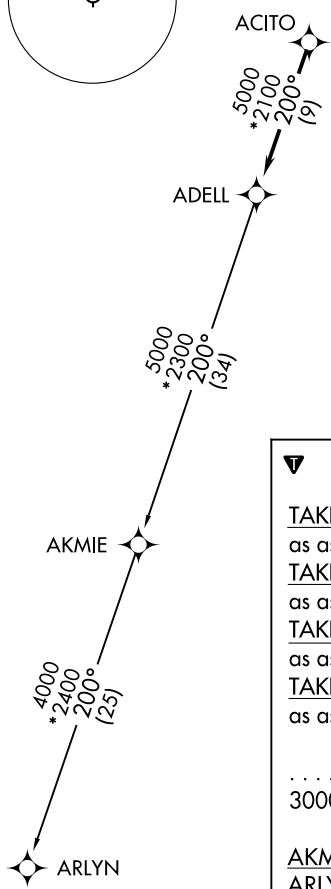


- TAKEOFF MINIMUMS:**
- Rwy 2: Standard with minimum climb of 420' per NM to 2700.
 - Rwy 9: Standard with minimum climb of 310' per NM to 2700.
 - Rwy 20: Standard with minimum climb of 370' per NM to 2700.
 - Rwy 27: Standard with minimum climb of 340' per NM to 2700.

- NOTE:** Turbojet departures maintain 250K until advised by ATC.
- NOTE:** AKMIE Transition: For aircraft inbound to BMI, SPI, PIA, or as assigned by ATC.

EC-3, 26 DEC 2024 to 23 JAN 2025

EC-3, 26 DEC 2024 to 23 JAN 2025



DEPARTURE ROUTE DESCRIPTION

TAKEOFF RUNWAY 2: Climb on heading 015° to 1300, then as assigned by ATC, for vectors to ACITO, thence. . . .

TAKEOFF RUNWAY 9: Climb on heading 089° to 1180, then as assigned by ATC, for vectors to ACITO, thence. . . .

TAKEOFF RUNWAY 20: Climb on heading 195° to 1180, then as assigned by ATC, for vectors to ACITO, thence. . . .

TAKEOFF RUNWAY 27: Climb on heading 269° to 1180, then as assigned by ATC, for vectors to ACITO, thence. . . .

. . . . on track 200° to ADELL, then on (transition). Maintain 3000. Expect filed altitude 10 minutes after departure.

AKMIE TRANSITION (ADELL7.AKMIE):

ARLYN TRANSITION (ADELL7.ARLYN):

NOTE: Chart not to scale.

ADELL SEVEN DEPARTURE (RNAV)
(ADELL7.ADELL) 31OCT24

CHICAGO/ROMEOVILLE, ILLINOIS
LEWIS UNIVERSITY (LOT)