

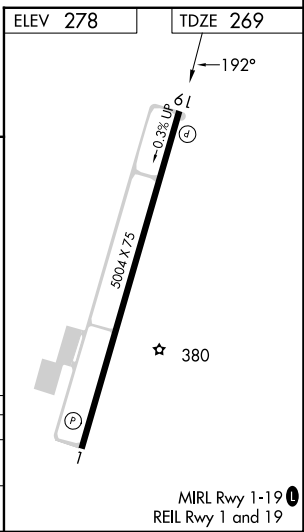
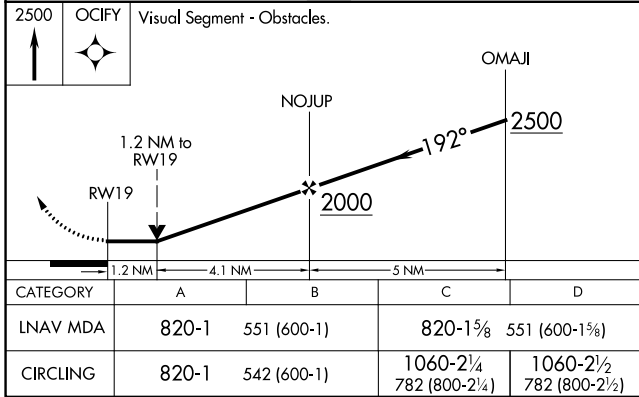
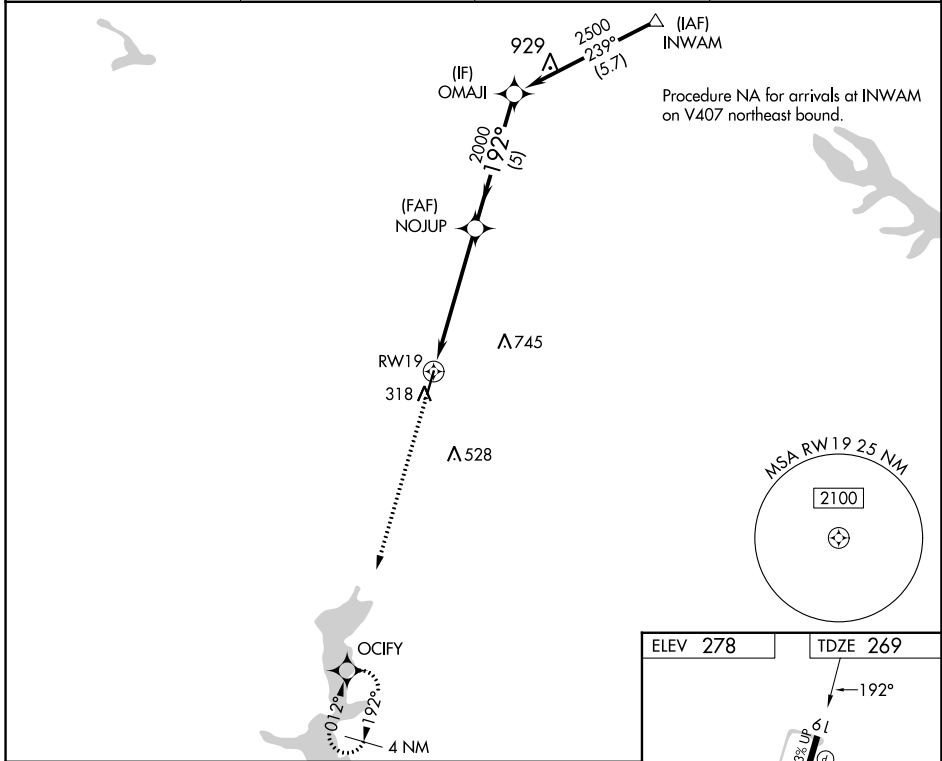
APP CRS	Rwy Idg	<b>5004</b>
<b>192°</b>	TDZE	<b>269</b>
	Apt Elev	<b>278</b>

# RNAV (GPS) RWY 19

MINDEN (MNE)

RNP APCH.	MISSED APPROACH: Climb to 2500 direct OCIFY and hold.
▽ Rwy 19 helicopter visibility reduction below 3/4 SM NA. When local altimeter setting not received, use Barksdale AFB altimeter setting; increase all MDAs 80 feet: increase visibility LNAV Cats C/D 1/2 SM and Circling Cats C/D 1/4 SM.	

AWOS-3PT <b>119.325</b>	SHREVEPORT APP CON <b>123.75 360.725</b>	GCO <b>135.075</b>	UNICOM <b>122.8</b> (CTAF) <b>1</b>
----------------------------	---	-----------------------	--



MINDEN, LOUISIANA	32°39'N-93°18'W	MINDEN (MNE)
Orig-C 07OCT21		<b>RNAV (GPS) RWY 19</b>

SC-4, 26 DEC 2024 to 23 JAN 2025

SC-4, 26 DEC 2024 to 23 JAN 2025

MIRL Rwy 1-19 **1**  
REIL Rwy 1 and 19