

APP CRS	Rwy Idg	4802
081°	TDZE	912
	Apt Elev	912

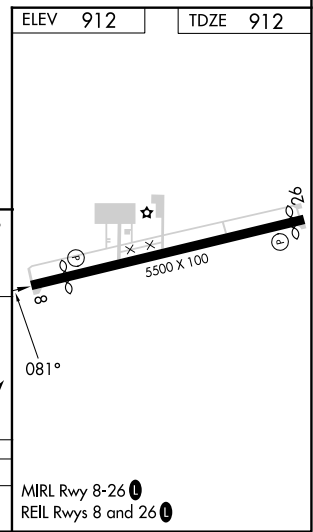
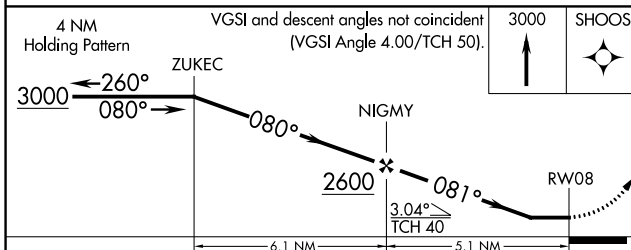
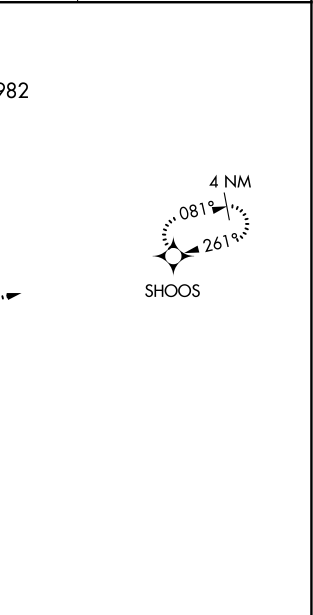
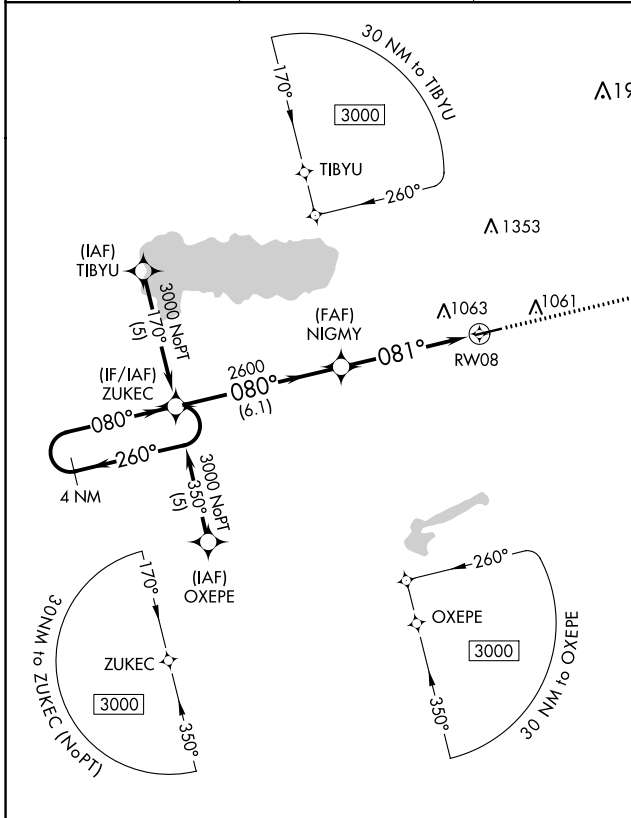
RNAV (GPS) RWY 8

NEIL ARMSTRONG (AXV)

RNP APCH - GPS.	▼ NA Rwy 8 helicopter visibility reduction below 1 SM NA. When local altimeter setting not received, use Lima altimeter setting and increase all MDAs 60 feet and visibility Cat C 1/8 SM. Procedure NA at night.

MISSED APPROACH: Climb to 3000 direct SHOOS and hold.

AWOS-3PT 128.325	COLUMBUS APP CON 134.45 294.5	UNICOM 122.8 (CTAF)	122.7 0
----------------------------	-----------------------------------------	-------------------------------	----------------



CATEGORY	A	B	C	D
LNAV MDA	1380-1	468 (500-1)	1380-1 1/4 468 (500-1 1/4)	NA

EC-2, 26 DEC 2024 to 23 JAN 2025

EC-2, 26 DEC 2024 to 23 JAN 2025