

WAAS CH 82229 W31A	APP CRS 317°	Rwy Idg TDZE Apt Elev	3700 3272 3279
--	------------------------	-----------------------------	---

RNAV (GPS) RWY 31

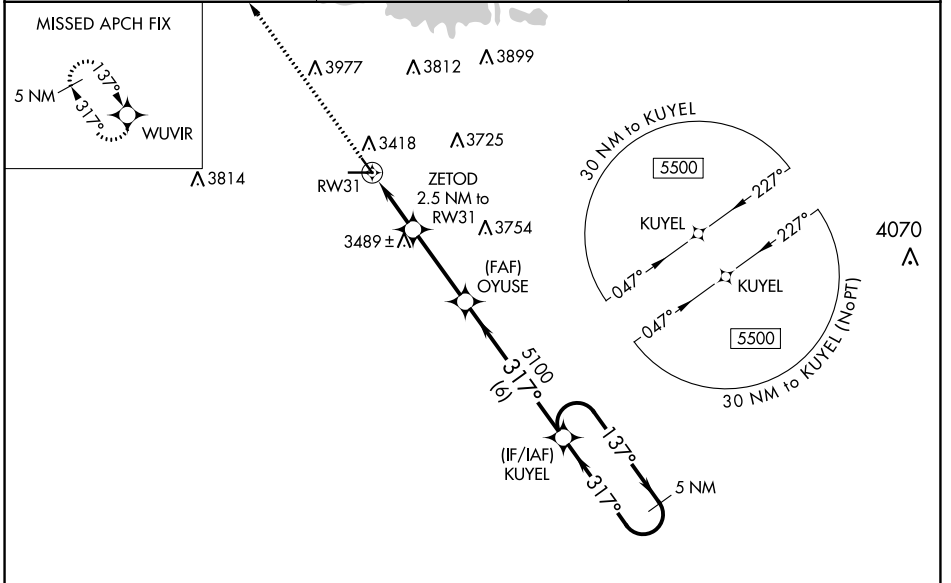
SEARLE FLD (OGA)

RNP APCH.

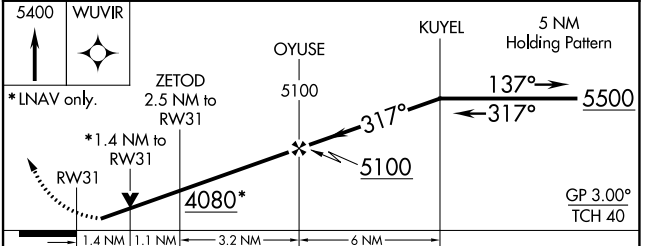
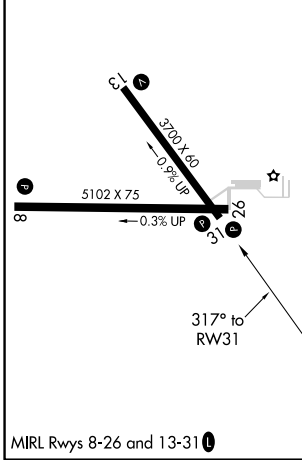
▼ Baro-VNAV and VDP NA when using Imperial altimeter setting. For uncompensated Baro-VNAV systems, LNAV/VNAV NA below -21°C or above 54°C. Helicopter visibility reduction below 3/4 SM NA. When local altimeter setting not received, use Imperial altimeter setting and increase all DA 86 feet and all MDA 100 feet, increase LPV and LNAV/VNAV all Cats visibility 1/8 SM, and Circling Cat B visibility 1/4 SM.

MISSED APPROACH: Climb to 5400 direct WUVIR and hold.

AWOS-3 121.275	DENVER CENTER 132.7 397.85	UNICOM 122.8 (CTAF) ①
--------------------------	--------------------------------------	---------------------------------



ELEV 3279	TDZE 3272
-----------	-----------



CATEGORY	A	B	C	D
LPV DA	3522-1	250 (300-1)		NA
LNAV/VNAV DA	3522-1	250 (300-1)		NA
LNAV MDA	3740-1	468 (500-1)		NA
CIRCLING	3940-1	4000-1		NA
	661 (700-1)	721 (800-1)		

NC-2, 26 DEC 2024 to 23 JAN 2025

NC-2, 26 DEC 2024 to 23 JAN 2025