

LOC/DME I-SMA 109.1 Chan 28	APP CRS 170°	Rwy Idg TDZE Apt Elev	6008 302 312
--	------------------------	-----------------------------	---

LOC RWY 17

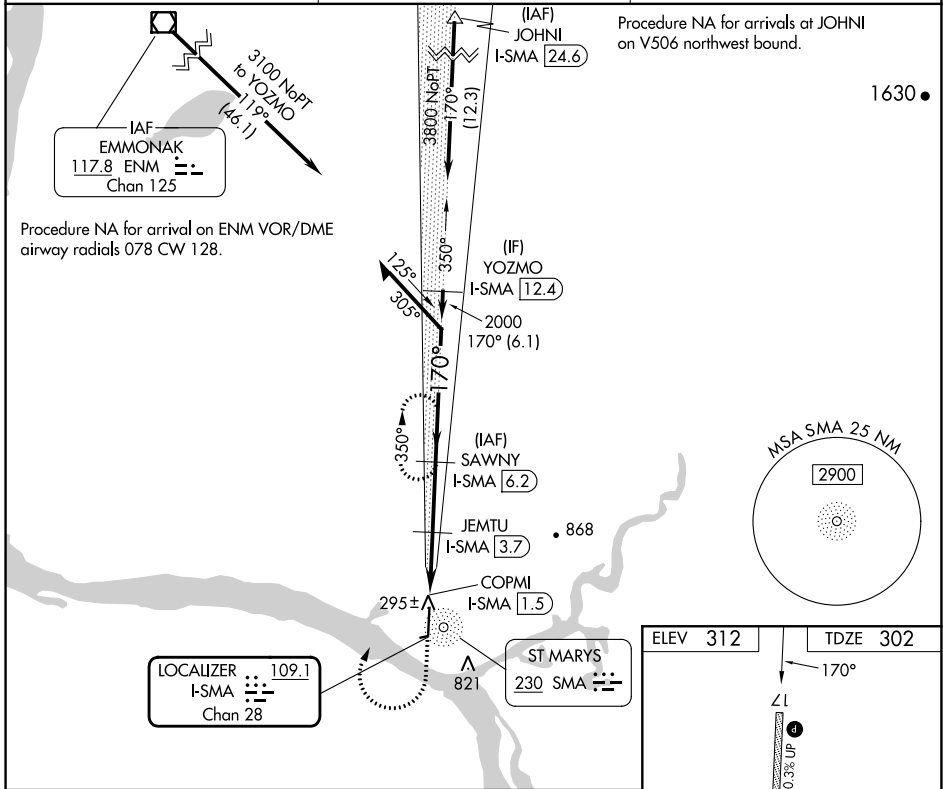
ST MARY'S (KSM)(PASM)

DME required.

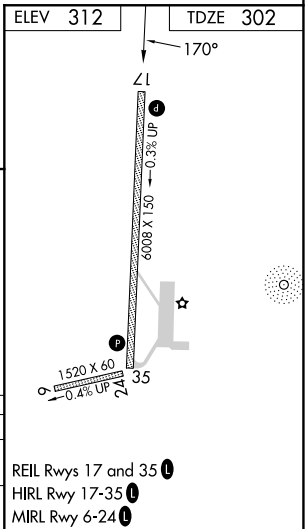
▼ Circling NA east of Rwy 17-35. Inop table does not apply to Cats A and B. For inop ALS, increase Cat C/D visibility to 1 1/8 SM.

▲ MISSED APPROACH: Climb to 800 then climbing right turn to 2600 on heading 025° and on I-SMA north course to SAWNY/I-SMA 6.2 DME and hold, continue climb-in-hold to 2600.

AWOS-3P 128.7	ANCHORAGE CENTER 124.0	CTAF 122.3
-------------------------	----------------------------------	----------------------



800	2600	I-SMA N crs	SAWNY I-SMA 6.2	SAWNY I-SMA 6.2	Remain within 10 NM
↑	hdg 025°				
		COPMI I-SMA 1.5	JEMTU I-SMA 3.7		
				350°	2600
				170°	2000
				3.00° TCH 51	
					1160
					2000
					2600
					6008 X 1.50
					0.3% UP
					1520 X 60
					0.4% UP
					24 35
CATEGORY	A	B	C	D	
S-17	700-1 398 (400-1)				
CIRCLING	820-1 508 (600-1)	820-1 1/2 508 (600-1 1/2)	880-2 568 (600-2)		



AK, 26 DEC 2024 to 20 FEB 2025

AK, 26 DEC 2024 to 20 FEB 2025