

RNAV 1 - DME/DME/IRU or GPS.

RADAR required.

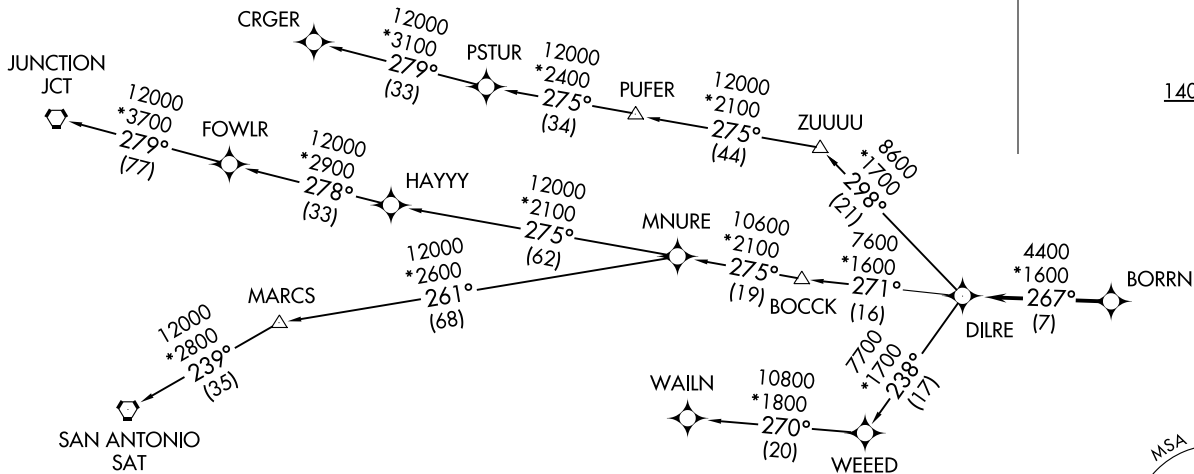
**TOP ALTITUDE:
ASSIGNED BY ATC**

AWOS-3
119.325
CTAF
123.0
HOUSTON DEP CON
119.7 281.4

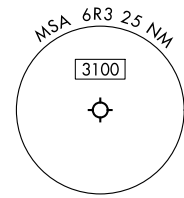
TAKEOFF MINIMUMS

Rwy 16: Standard with minimum
climb of 500'/NM to 660.

Rwy 34: Standard with minimum
climb of 500'/NM to 1000.



NOTE: CRGER-TRANSITION ATC assigned only
for aircraft departing 54T, AXH, EFD, GLS,
HPY, IWS, LBX, LVJ, SGR, TME, TØØ, T41.



NOTE: Chart not to scale.

(NARRATIVE ON FOLLOWING PAGE)

BORRN SIX DEPARTURE (RNAV)
(BORRN6.BORRN) 30NOV23
CLEVELAND, TEXAS
CLEVELAND MUNI (6R3)

(BORRN6.BORRN) 23334
BORRN SIX DEPARTURE (RNAV)
AL-6073 (FAA)
CLEVELAND MUNI (6R3)
CLEVELAND, TEXAS

BORRN SIX DEPARTURE (RNAV)



DEPARTURE ROUTE DESCRIPTION

TAKEOFF RUNWAY 16: Climb on heading 157° to 1400, for RADAR vectors to BORRN, thence. . . .

TAKEOFF RUNWAY 34: Climb on heading 337° to 2000, for RADAR vectors to BORRN, thence. . . .

. . . .on track 267° to DILRE, then on (transition). Maintain ATC assigned altitude. Expect filed altitude 10 minutes after departure.

CRGER TRANSITION (BORRN6.CRGER)

JUNCTION TRANSITION (BORRN6.JCT)

MNURE TRANSITION (BORRN6.MNURE)

SAN ANTONIO TRANSITION (BORRN6.SAT)

WAILN TRANSITION (BORRN6.WAILN)

SC-5, 26 DEC 2024 to 23 JAN 2025

SC-5, 26 DEC 2024 to 23 JAN 2025