

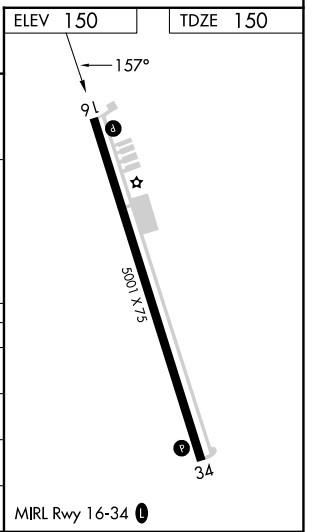
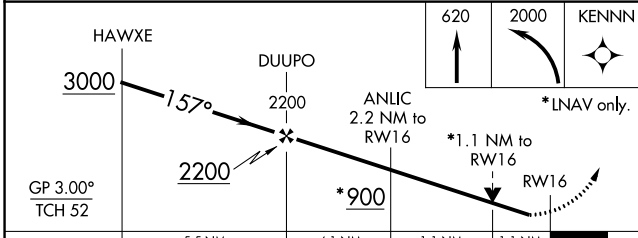
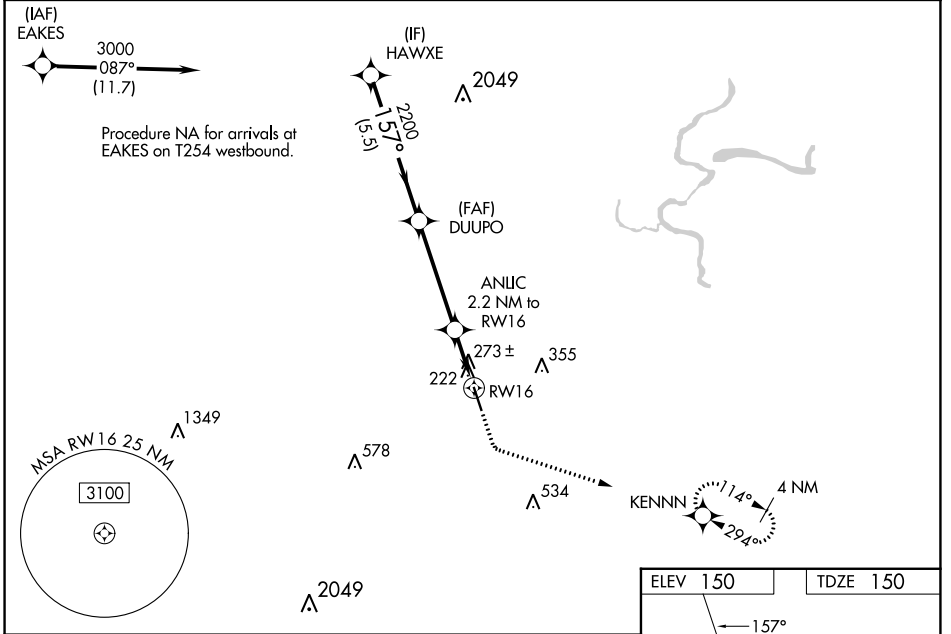
WAAS CH <b>65724</b> <b>W16A</b>	APP CRS <b>157°</b>	Rwy Idg <b>5001</b> TDZE <b>150</b> Apt Elev <b>150</b>
--	------------------------	---

# RNAV (GPS) RWY 16

CLEVELAND MUNI (6R:3)

RNP APCH.	<p><b>▽</b> Circling to Rwy 34 NA at night. Rwy 16 helicopter visibility reduction below ¾ SM NA. For uncompensated Baro-VNAV systems, LNAV/VNAV NA below -1.5°C or above 54°C.</p> <p><b>▲</b> MISSED APPROACH: Climb to 620 then climbing left turn to 2000 direct KENNN and hold.</p>
-----------	--

AWOS-3 <b>119.325</b>	HOUSTON APP CON <b>119.7 281.4</b>	UNICOM <b>123.0 (CTAF) 0</b>
--------------------------	---------------------------------------	---------------------------------



CATEGORY	A	B	C	D
LPV DA	400-1	250 (300-1)		NA
LNAV/VNAV DA	433-1	283 (300-1)		NA
LNAV MDA	540-1	390 (400-1)	540-1 1/8 390 (400-1 1/8)	NA
CIRCLING	600-1	450 (500-1)	660-1 1/2 510 (600-1 1/2)	NA

SC-5, 26 DEC 2024 to 23 JAN 2025

SC-5, 26 DEC 2024 to 23 JAN 2025