

WAAS CH 93900 W35A	APP CRS 353°	Rwy Idg TDZE Apt Elev	5364 650 658
--	------------------------	-----------------------------	---

RNAV (GPS) RWY 35

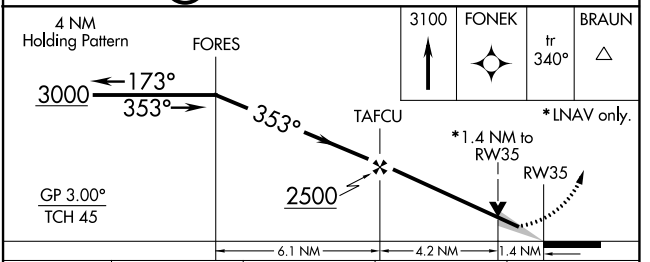
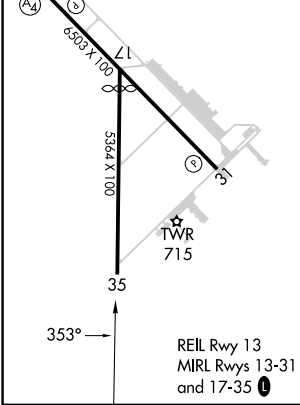
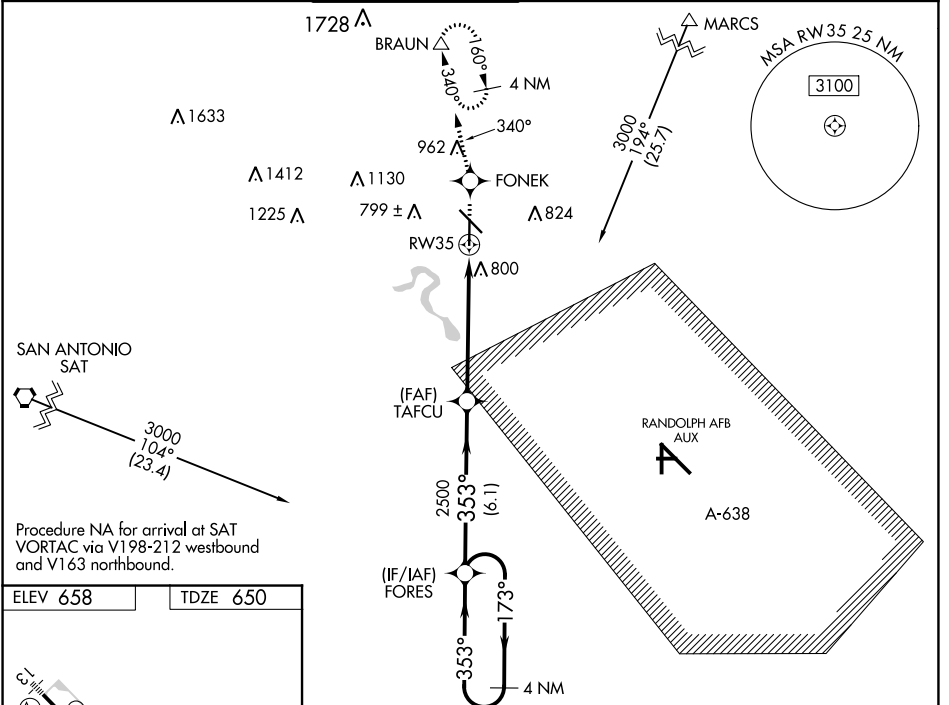
NEW BRAUNFELS NTL (BAZ)

RNP APCH.

When local altimeter setting not received, use San Marcos Rgnl altimeter setting; increase LPV DA to 972 feet, LNAV/VNAV DA to 1153 feet; increase all MDAs 60 feet and visibility LNAV Cat C and D ¼ SM. Baro-VNAV and VDP NA when using San Marcos Rgnl altimeter setting. For uncompensated Baro-VNAV systems, LNAV/VNAV NA below -16°C (4°F) or above 47°C (116°F).

MISSED APPROACH: Climb to 3100 direct FONEK and via 340° track to BRAUN and hold, continue climb-in-hold to 3100.

ATIS 119.325	SAN ANTONIO APP CON 124.45 335.625	NEW BRAUNFELS TOWER* 127.05 (CTAF) 285.4	GND CON 120.175	CLNC DEL 134.75	CLNC DEL 134.75 (When twr closed)	UNICOM 122.7
------------------------	--	--	---------------------------	---------------------------	--	------------------------



CATEGORY	A	B	C	D
LPV DA		929-1	279 (300-1)	
LNAV/VNAV DA		1110-1¾	460 (500-1¾)	
LNAV MDA	1140-1	490 (500-1)	1140-1⅜ 490 (500-1⅜)	1140-1½ 490 (500-1½)

SC-3, 26 DEC 2024 to 23 JAN 2025

SC-3, 26 DEC 2024 to 23 JAN 2025