

(YODUH1.YODUH) 24025

AL-6080 (FAA)

NEW BRAUNFELS NTL (BAZ)
NEW BRAUNFELS, TEXAS

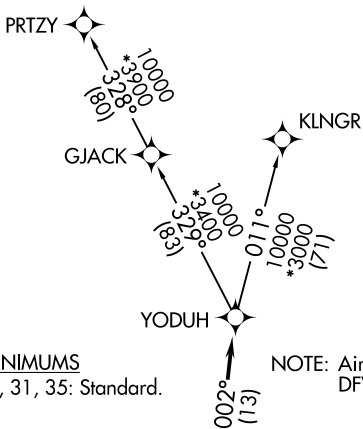
YODUH ONE DEPARTURE (RNAV)

RNAV 1 - DME/DME IRU or GPS.

**TOP ALTITUDE:
ASSIGNED BY ATC**

RADAR required.

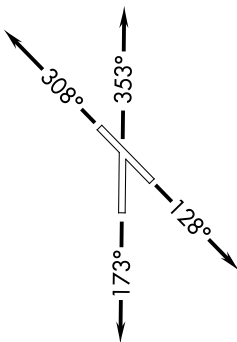
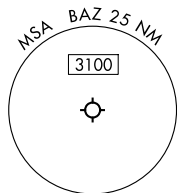
SAN ANTONIO DEP CON
128.05 290.225
ATIS
119.325
CLNC DEL
134.75
CLNC DEL (When twr closed)
134.75
GND CON
120.175
NEW BRAUNFELS TOWER *
127.05 285.4



TAKEOFF MINIMUMS

Rwys 13, 17, 31, 35: Standard.

NOTE: Aircraft destined for airports north/northeast of DFW terminal area must file the KLNGR Transition.



NOTE: Chart not to scale.



DEPARTURE ROUTE DESCRIPTION

TAKEOFF RUNWAY 13: Climb on heading 128° or as assigned by ATC, for vectors to SITHH, thence . . .

TAKEOFF RUNWAY 17: Climb on heading 173° or as assigned by ATC, for vectors to SITHH, thence . . .

TAKEOFF RUNWAY 31: Climb on heading 308° or as assigned by ATC, for vectors to SITHH, thence . . .

TAKEOFF RUNWAY 35: Climb on heading 353° or as assigned by ATC, for vectors to SITHH, thence . . .

. . . on track 002° to YODUH, then on Transition. Maintain ATC assigned altitude.

KLNGR TRANSITION (YODUH1.KLNGR)

PRTZY TRANSITION (YODUH1.PRTZY)

YODUH ONE DEPARTURE (RNAV)

(YODUH1.YODUH) 25JAN24

NEW BRAUNFELS, TEXAS
NEW BRAUNFELS NTL (BAZ)

SC-3, 26 DEC 2024 to 23 JAN 2025

SC-3, 26 DEC 2024 to 23 JAN 2025