

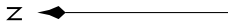
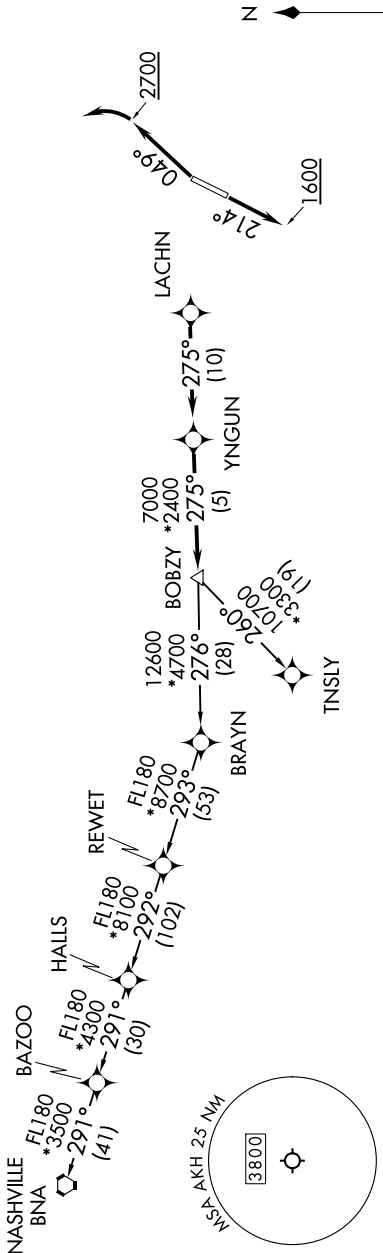
# BOBZY FIVE DEPARTURE (RNAV)

**TOP ALTITUDE:**  
3000

RNAV 1-DME/DME/IRU or GPS.  
RADAR required.

CHARLOTTE DEP CON  
120.05 257.2  
ASOS  
135.725  
CLNC DEL  
127.2  
UNICOM  
123.0

**TAKEOFF MINIMUMS**  
Rwys 3, 21: Standard.



## DEPARTURE ROUTE DESCRIPTION

**TAKEOFF RUNWAY 3:** Climb on heading 049° to 2700 before turning left, then on heading assigned by ATC, thence. . . .  
**TAKEOFF RUNWAY 21:** Climb on heading 214° to 1600 before proceeding north, then on heading assigned by ATC, thence. . . .

. . . . on RADAR vectors to LACHN, then on depicted route to BOBZY, then on assigned transition. Maintain 3000, expect clearance to filed altitude within 10 minutes after departure.

**NASHVILLE TRANSITION (BOBZY5.BNA)**  
**TNSLY TRANSITION (BOBZY5.TNSLY)**

**NOTE:** For turbo jets only.  
**NOTE:** If unable to accept climb rates, advise ATC on initial contact.  
**NOTE:** Transponder code will be issued via PDC or Charlotte CLNC DEL.  
**NOTE:** Upon reaching 10000 MSL, accelerate to and maintain 280K, if unable advise ATC.

NOTE: Chart not to scale.