

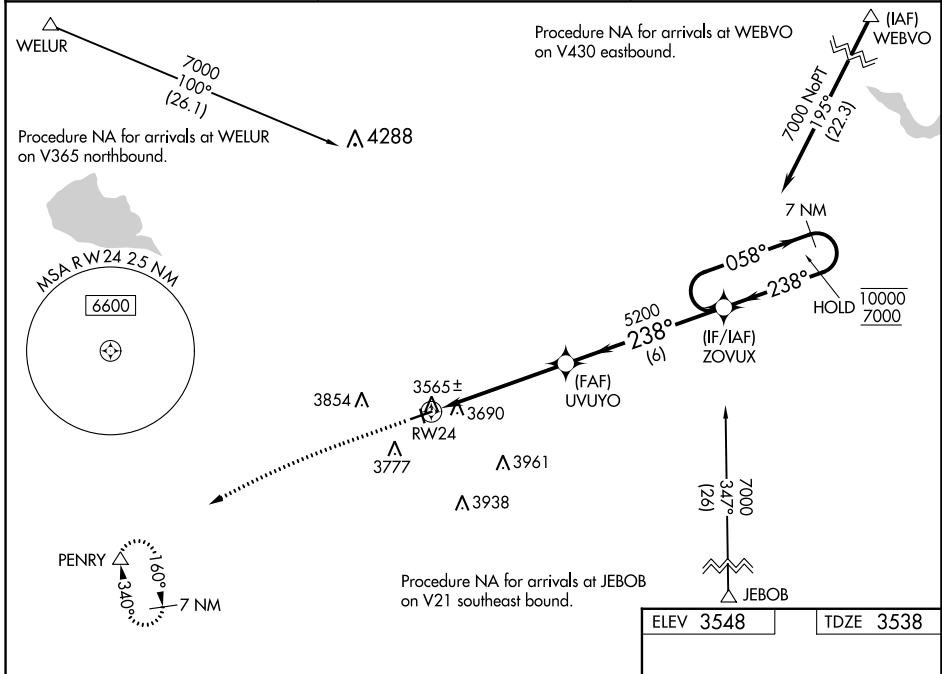
WAAS CH <b>69642</b> <b>W24A</b>	APP CRS <b>238°</b>	Rwy Idg TDZE Apt Elev	<b>4602</b> <b>3538</b> <b>3548</b>
----------------------------------------	------------------------	-----------------------------	-------------------------------------------

# RNAV (GPS) RWY 24

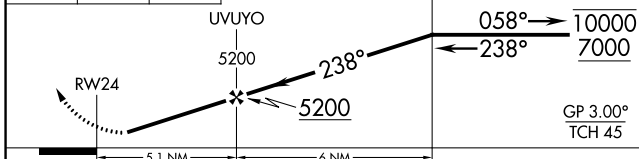
CONRAD (S01)

RNP APCH.	MISSED APPROACH: Climb to 4120 then climbing left turn to 7000 direct PENRY and hold, continue climb-in-hold to 7000.
<p>NA Circling NA to Rwy 15 and 33. Rwy 24 helicopter visibility reduction below 3/4 SM NA. Baro-VNAV NA. Use Cut Bank altimeter setting.</p>	

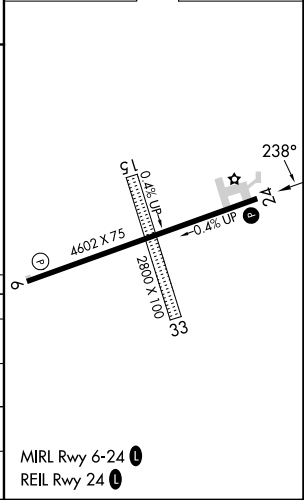
CTB ASOS <b>119.025</b>	SALT LAKE CITY CENTER <b>133.4 285.4</b>	AUNICOM <b>122.8 (CTAF) 0</b>
----------------------------	---------------------------------------------	----------------------------------



4120	7000	PENRY	VGSI and RNAV glidepath not coincident (VGSI Angle 3.00/TCH 27).	7 NM Holding Pattern
↑	↶	△	ZOVUX	



ELEV 3548	TDZE 3538
-----------	-----------



CATEGORY	A	B	C	D
LPV DA		3905-1	367 (400-1)	
LNAV/VNAV DA		4018-1 3/8	480 (500-1 3/8)	
LNAV MDA	4120-1	582 (600-1)	4120-1 3/4	582 (600-1 3/4)
CIRCLING	4140-1 592 (600-1)	4340-1 792 (800-1)	4460-2 3/4 912 (1000-2 3/4)	4620-3 1072 (1100-3)

NW-1, 26 DEC 2024 to 23 JAN 2025

NW-1, 26 DEC 2024 to 23 JAN 2025