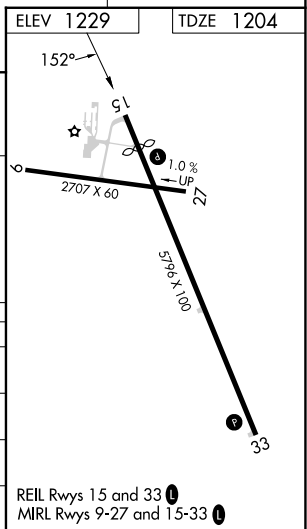
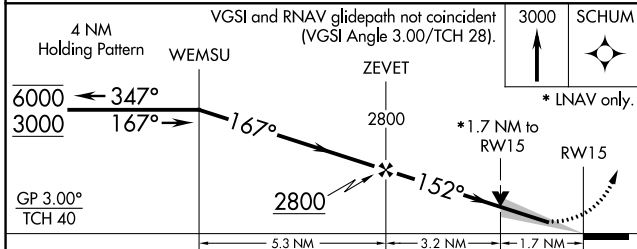
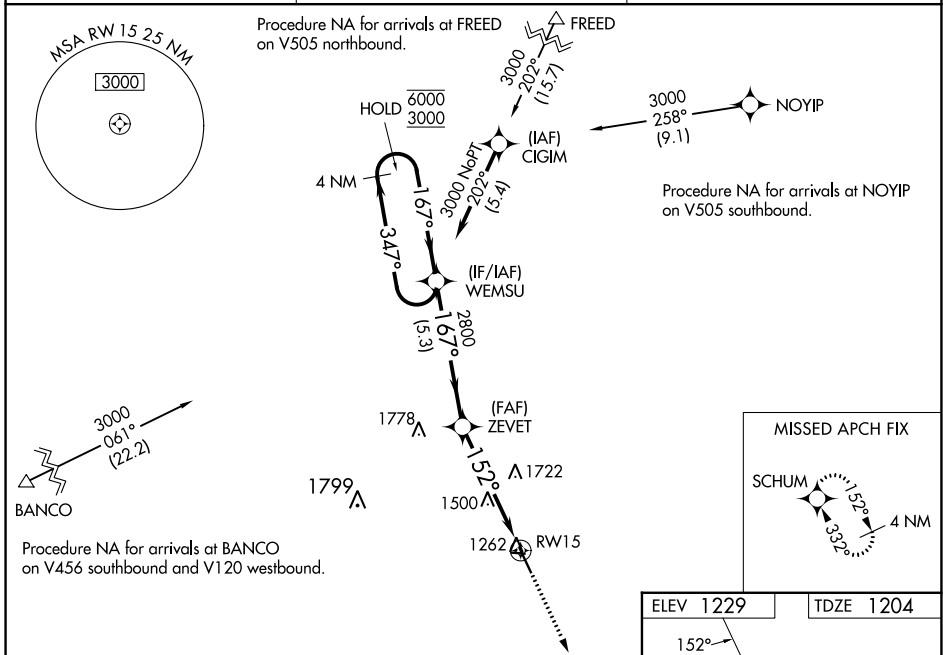


WAAS CH 90428 W15A	APP CRS 152°	Rwy Idg TDZE 1204 Apt Elev 1229
--	------------------------	---

RNAV (GPS) RWY 15

FOREST CITY MUNI/TRIMBLE FLD (FXY)

RNP APCH.		<p>MISSED APPROACH: Climb to 3000 direct to SCHUM and hold.</p>
<p>▼ Circling to Rwy 9, 27 and 33 NA at night. For uncompensated Baro-VNAV systems, LNAV/VNAV NA below -29°C or above 54°C. When local altimeter setting not received, use Mason City altimeter setting and increase LPV DA to 1488 feet; LNAV/VNAV DA to 1516 feet; increase all MDA 40 feet. VDP and Baro-VNAV NA when using Mason City altimeter setting.</p>	<p>AWOS-3 123.925</p>	
<p>MINNEAPOLIS CENTER 127.3 257.675</p>		<p>UNICOM 122.8 (CTAF) ①</p>



CATEGORY	A	B	C	D
LPV DA		1454-1	250 (300-1)	
LNAV/VNAV DA		1482-1	278 (300-1)	
LNAV MDA	1760-1	556 (600-1)	1760-1 $\frac{5}{8}$	556 (600-1 $\frac{5}{8}$)
CIRCLING	1760-1	531 (600-1)	2040-2 $\frac{1}{2}$ 811 (900-2 $\frac{1}{2}$)	2040-2 $\frac{3}{4}$ 811 (900-2 $\frac{3}{4}$)

NC-3, 26 DEC 2024 to 23 JAN 2025

NC-3, 26 DEC 2024 to 23 JAN 2025