

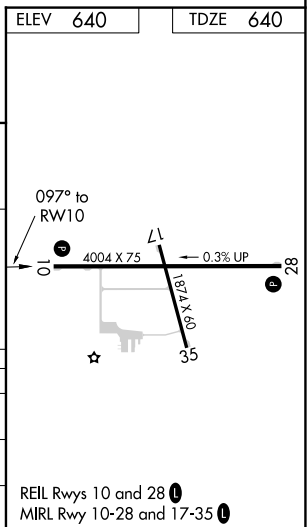
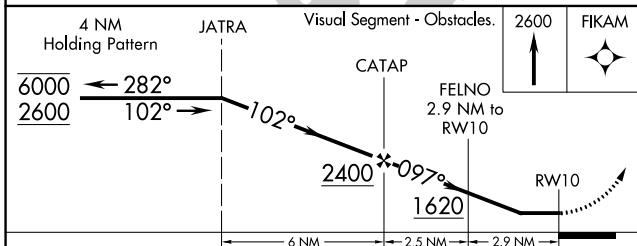
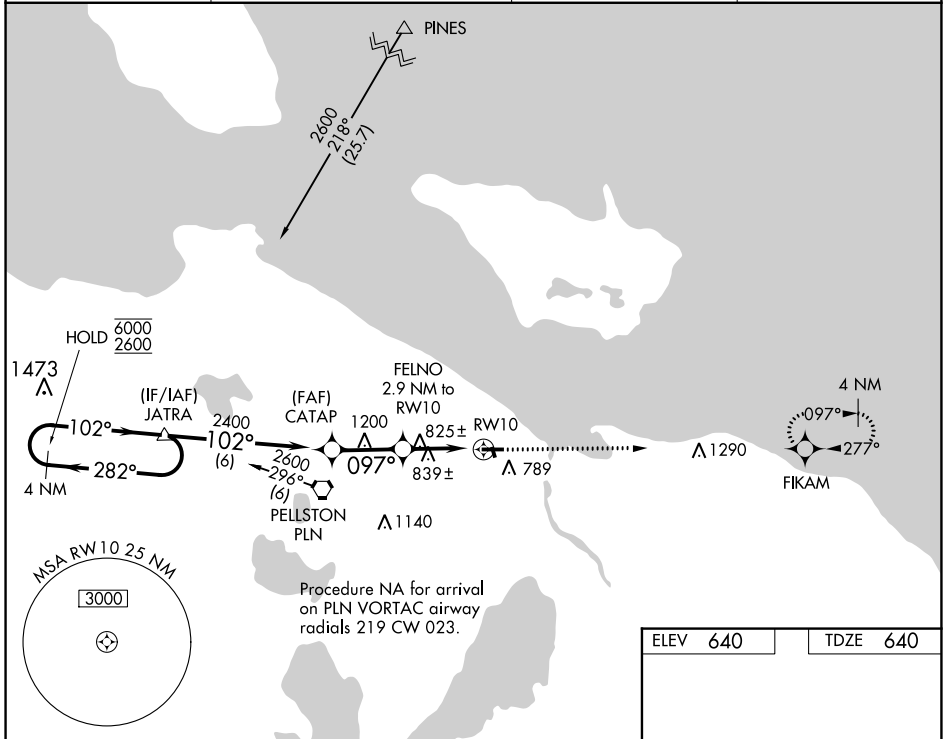
WAAS CH 50224 W10A	APP CRS 097°	Rwy Idg TDZE Apt Elev	4004 640 640
--	------------------------	-----------------------------	---

RNAV (GPS) RWY 10

CHEBOYGAN COUNTY (SLH)

RNP APCH - GPS.	MISSED APPROACH: Climb to 2600 direct FIKAM and hold.
<p>▽ Rwy 10 helicopter visibility reduction below 1 SM NA.</p> <p>▲ Procedure NA at night.</p>	

AWOS-3 118.175	MINNEAPOLIS CENTER 134.6 354.05	UNICOM 122.8 (CTAF)	122.5 0
--------------------------	---	-------------------------------	----------------



CATEGORY	A	B	C	D
LP MDA	1080-1	440 (500-1)	1080-1¼ 440 (500-1¼)	NA
LNAV MDA	1100-1	460 (500-1)	1100-1⅜ 460 (500-1⅜)	NA
C CIRCLING	1140-1	500 (500-1)	1140-1½ 500 (500-1½)	NA

REIL Rwy 10 and 28 **0**
MIRL Rwy 10-28 and 17-35 **0**

EC-1, 26 DEC 2024 to 23 JAN 2025

EC-1, 26 DEC 2024 to 23 JAN 2025