

WAAS CH <b>99727</b> <b>W28A</b>	APP CRS <b>277°</b>	Rwy Idg TDZE Apt Elev	<b>4004</b> <b>637</b> <b>640</b>
--	------------------------	-----------------------------	---

# RNAV (GPS) RWY 28

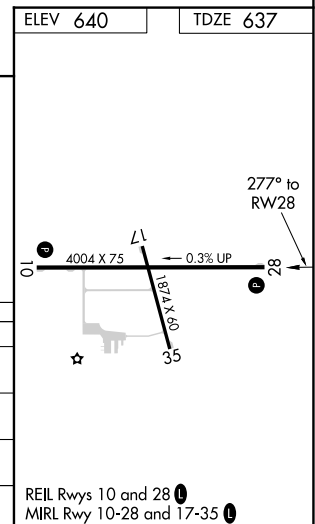
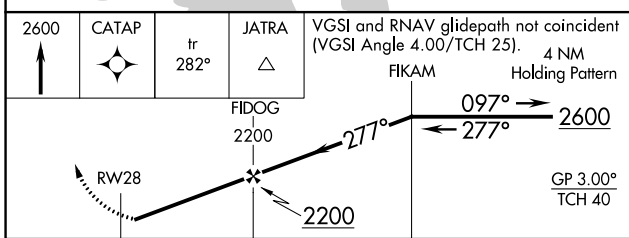
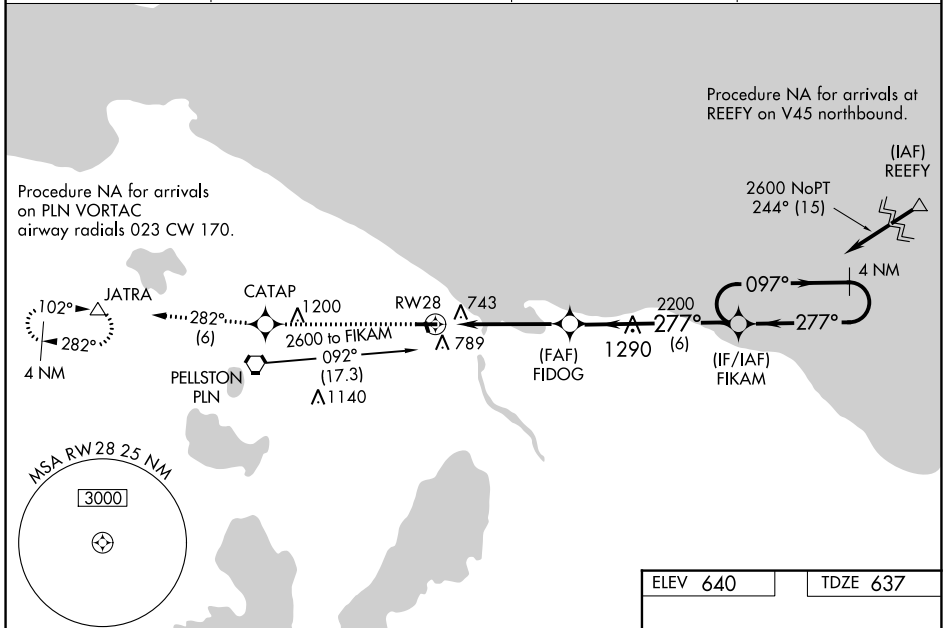
CHEBOYGAN COUNTY (SLH)

RNP APCH.

**▼** Night landing Rwy 17, 35 NA. Baro-VNAV NA when using Pellston altimeter setting. For uncompensated Baro-VNAV systems, LNAV/VNAV NA below -16°C (4°F) or above 54°C (130°F). Helicopter visibility reduction below 3/4 SM NA. When local altimeter setting not received, use Pellston altimeter setting; increase all DA 41 feet and all MDA 60 feet and increase LNAV/VNAV all Cats visibility 1/4 SM and LNAV Cat C visibility 1/8 SM.

**MISSED APPROACH:** Climb to 2600 direct CATAP and on track 282° to JATRA and hold.

AWOS-3 <b>118.175</b>	MINNEAPOLIS CENTER <b>134.6 354.05</b>	UNICOM <b>122.8 (CTAF)</b>	<b>122.5</b> <b>Ⓛ</b>
--------------------------	---	-------------------------------	-----------------------



CATEGORY	A	B	C	D
LPV DA	887-1	250 (300-1)		NA
LNAV/VNAV DA	953-1	316 (400-1)		NA
LNAV MDA	1060-1	423 (500-1)	1060-1 1/4 423 (500-1 1/4)	NA
<b>C</b> CIRCLING	1140-1	500 (500-1)	1140-1 1/2 500 (500-1 1/2)	NA

EC-1, 26 DEC 2024 to 23 JAN 2025

EC-1, 26 DEC 2024 to 23 JAN 2025