

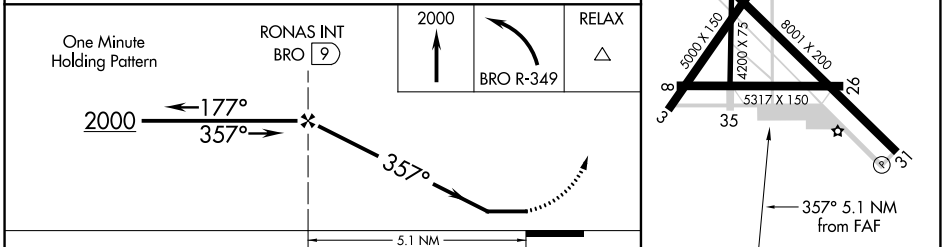
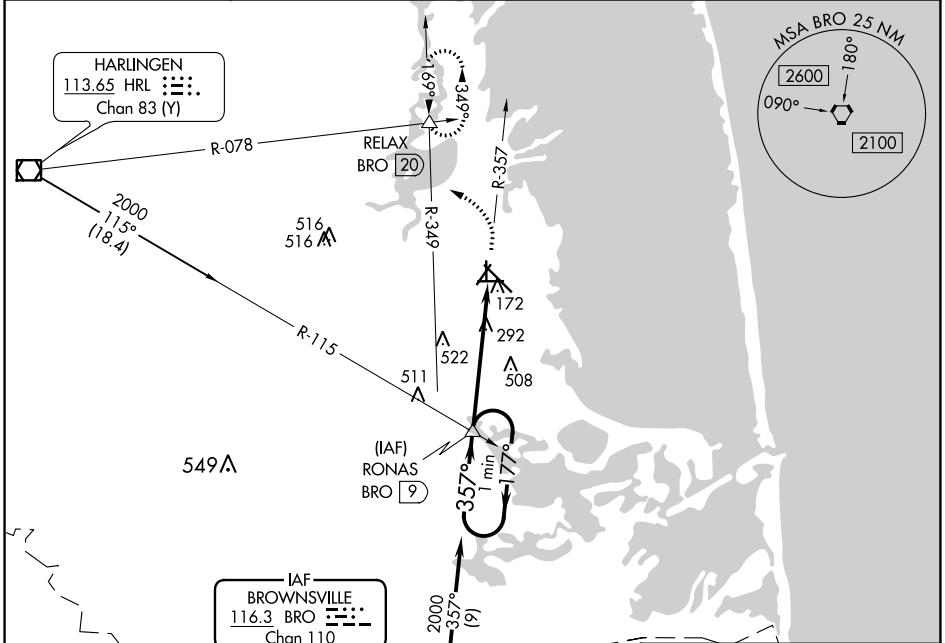
VORTAC BRO 116.3 Chan 110	APP CRS 357°	Rwy Idg TDZE Apt Elev	N/A N/A 19
--	------------------------	-----------------------------	---------------------------------------

VOR-A

PORT ISABEL-CAMERON COUNTY (PIL)

▼ When local altimeter setting not received, use Brownsville altimeter setting and increase all MDA 40 feet and increase Cat C visibility ¼ mile. Circling Rwys 3, 8, 17, 21, 26, 35 NA at night.
▲ NA MISSED APPROACH: Climb to 2000 then turn left via BRO R-349 to RELAX INT/BRO 20 DME and hold.

ASOS 118.525	VALLEY APP CON 119.5 257.6	CINC DEL 119.2	UNICOM 122.8 (CTAF)
------------------------	--------------------------------------	--------------------------	-------------------------------



CATEGORY	A	B	C	D	FAF to MAP 5.1 NM					
☐ CIRCLING	780-1	761 (800-1)	840-2½ 821 (900-2½)	NA	Knots	60	90	120	150	180
					Min:Sec	5:06	3:24	2:33	2:02	1:42

VOR-A

SC-3, 26 DEC 2024 to 23 JAN 2025

SC-3, 26 DEC 2024 to 23 JAN 2025