

RNAV (GPS) RWY 18

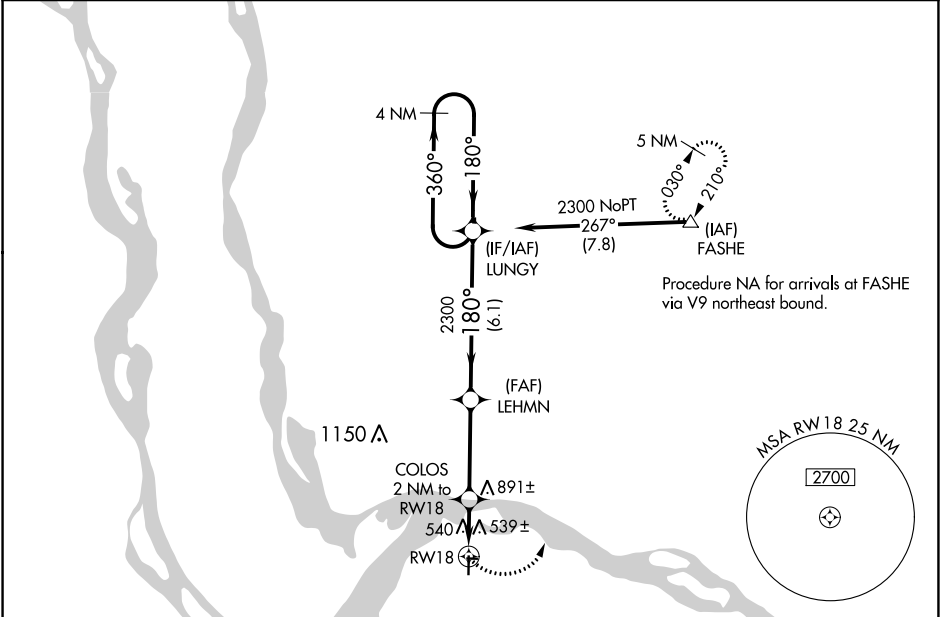
ST CHARLES COUNTY RGNL/SMARTT FLD (S/E/T)

APP CRS 180°	Rwy Idg 3800
	TDZE 437
	Apt Elev 437

⚠ DME/DME RNP-0.3 NA. When local altimeter setting not received, use St Louis Lambert Intl altimeter setting and increase all MDAs 60 feet; increase visibility Cat C ¼ SM. VDP NA with St Louis Lambert Intl altimeter setting.

MISSED APPROACH: Climbing left turn to 2700 direct FASHE and hold.

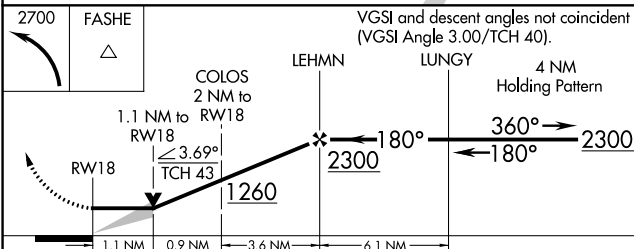
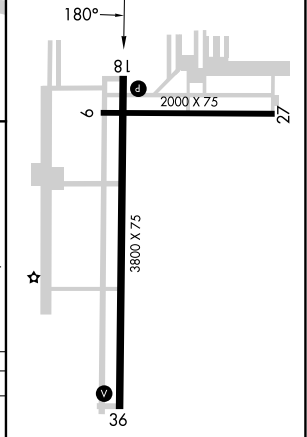
ASOS 118.075	ST. LOUIS APP CON 124.2 353.9	CLNC DEL 121.6	UNICOM 122.7 (CTAF)
------------------------	---	--------------------------	-------------------------------



NC-3, 26 DEC 2024 to 23 JAN 2025

NC-3, 26 DEC 2024 to 23 JAN 2025

ELEV 437	TDZE 437
----------	----------



CATEGORY	A	B	C	D
RNAV MDA	840-1	403 (500-1)	840-1¼ 403 (500-1¼)	NA
CIRCLING	840-1 403 (500-1)	900-1 463 (500-1)	1220-2¼ 783 (800-2¼)	NA

REIL Rwy 18 **Ⓛ**
MIRL Rwy 9-27 and 18-36 **Ⓛ**