

WAAS CH <b>58111</b> <b>W18A</b>	APP CRS <b>178°</b>	Rwy Idg TDZE Apt Elev	<b>6000</b> <b>846</b> <b>846</b>
--	------------------------	-----------------------------	---

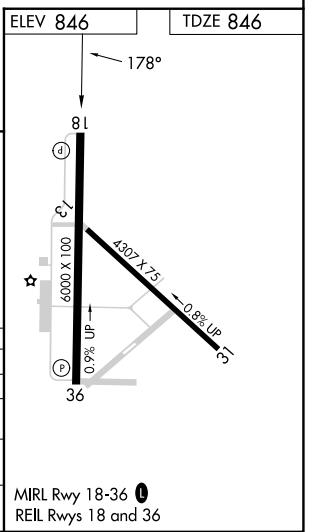
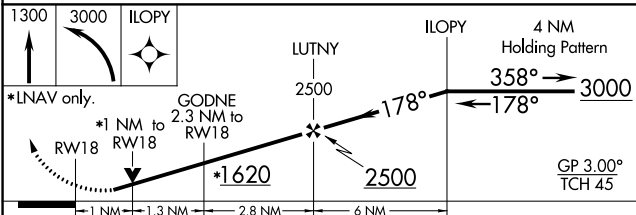
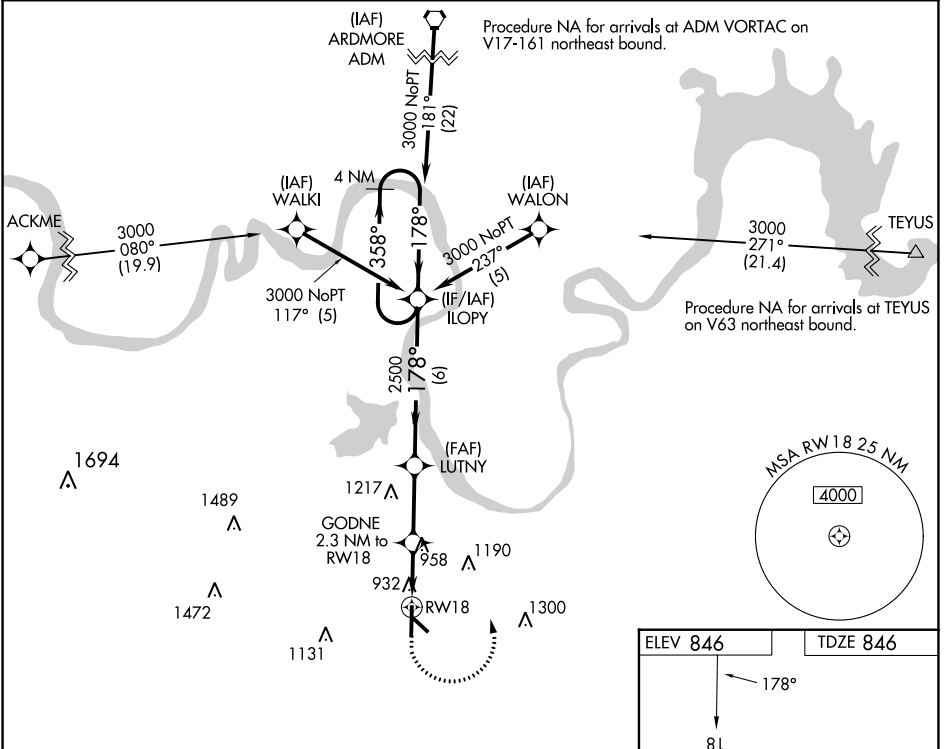
# RNAV (GPS) RWY 18

GAINESVILLE MUNI (G.L.E.)

**⚠** For uncompensated Baro-VNAV systems, LNAV/VNAV NA below -16°C (4°F) or above 54°C (130°F). DME/DME RNP-0.3 NA. Rwy 18 helicopter visibility reduction below 3/4 SM NA.

**⚠** MISSED APPROACH: Climb to 1300 then climbing left turn to 3000 direct ILOPY and hold.

AWOS-3 <b>118.375</b>	FORT WORTH CENTER <b>124.75 323.0</b>	UNICOM <b>123.0 (CTAF) 0</b>
--------------------------	--	---------------------------------



CATEGORY	A	B	C	D
LPV DA		1113-7/8	267 (300-7/8)	
LNAV/VNAV DA		1114-7/8	268 (300-7/8)	
LNAV MDA		1220-1	374 (400-1)	
<b>C</b> CIRCLING	1280-1 434 (500-1)	1320-1 474 (500-1)	1520-2 674 (700-2)	1600-2½ 754 (800-2½)

SC-2, 26 DEC 2024 to 23 JAN 2025

SC-2, 26 DEC 2024 to 23 JAN 2025