

WAAS CH 53640 W17A	APP CRS 174°	Rwy ldg 6006 TDZE 111 Apt Elev 112
--	------------------------	---

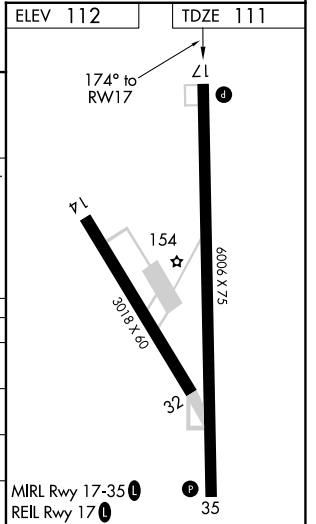
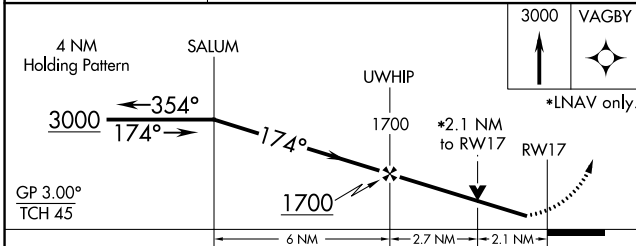
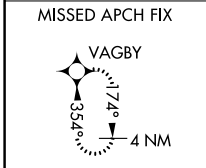
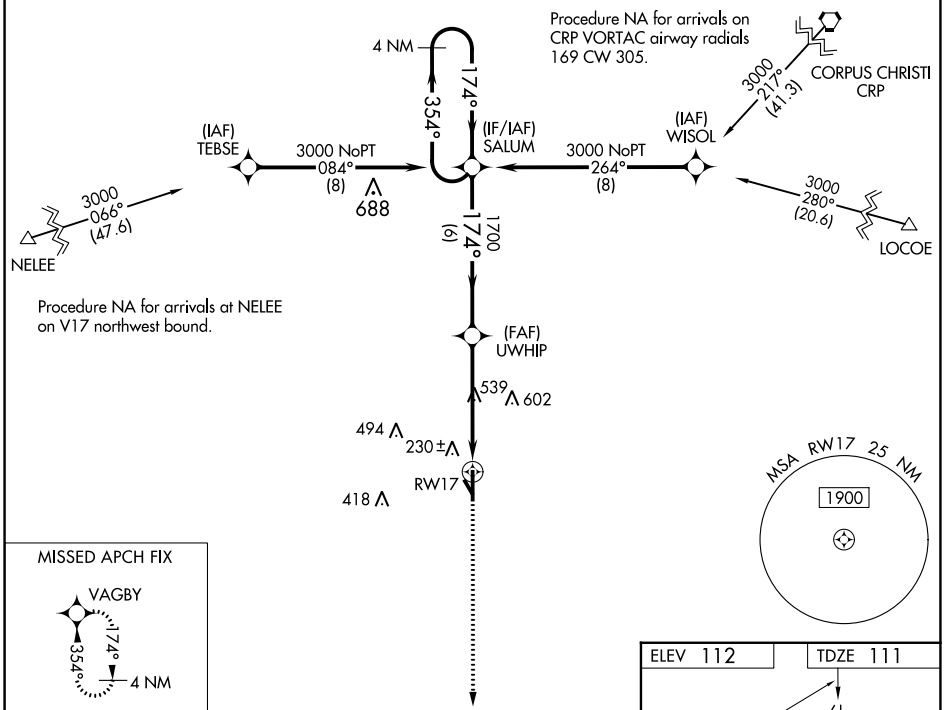
RNAV (GPS) RWY 17

BROOKS COUNTY (BKS)

⚠ For uncompensated Baro-VNAV systems, LNAV/VNAV NA below -15°C (5°F) or above 54°C (130°F).
⚠ Circling Rwy 14 NA at night. Rwy 17 helicopter visibility reduction below ¾ M NA.
 DME/DME RNP-0.3 NA. Circling NA for Cat D west of Rwy 17-35.

MISSED APPROACH: Climb to 3000 direct VAGBY and hold.

AWOS-3PT 118.125	KINGSVILLE APP CON * 119.9 290.45	UNICOM 122.8 (CTAF) 0
----------------------------	---	---------------------------------



CATEGORY	A	B	C	D
LPV DA	361-1 250 (300-1)			
LNAV/VNAV DA	361-1 250 (300-1)			
LNAV MDA	840-1 729 (800-1)		840-2 729 (800-2)	
C CIRCLING	840-1 728 (800-1)		940-2½ 828 (900-2½)	940-2¾ 828 (900-2¾)

MIRL Rwy 17-35 0
REL Rwy 17 0