

WAAS CH <b>49140</b> <b>W35A</b>	APP CRS <b>354°</b>	Rwy Idg TDZE <b>112</b> Apt Elev <b>112</b>	<b>6006</b>
--	------------------------	---	-------------

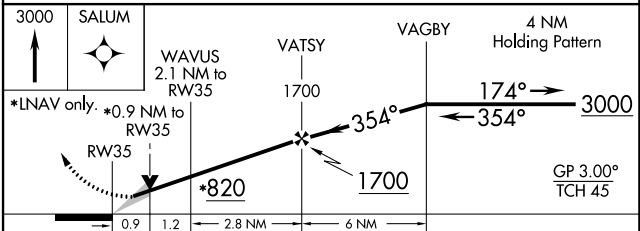
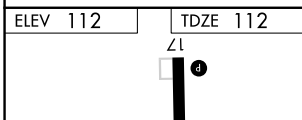
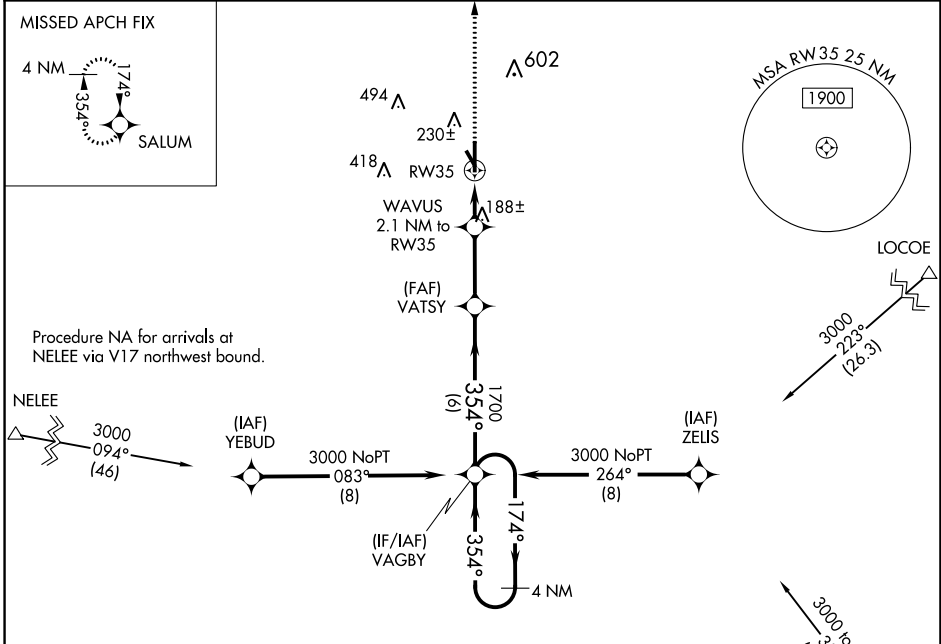
# RNAV (GPS) RWY 35

BROOKS COUNTY (BKS)

**⚠** For uncompensated Baro-VNAV systems, LNAV/VNAV NA below -15°C (5°F) or above 54°C (130°F). Circling Rwy 14 NA at night. DME/DME RNP-0.3 NA.

**⚠** MISSED APPROACH: Climb to 3000 direct SALUM and hold.

AWOS-3PT <b>118.125</b>	KINGSVILLE APP CON * <b>119.9 290.45</b>	UNICOM <b>122.8 (CTAF) 0</b>
----------------------------	---	---------------------------------



CATEGORY	A	B	C	D
LPV DA		362-1	250 (300-1)	
LNAV/VNAV DA		362-1	250 (300-1)	
LNAV MDA		440-1	328 (400-1)	
<b>CIRCLING</b>	580-1 468 (500-1)	680-1 568 (600-1)	940-2½ 828 (900-2½)	940-2¾ 828 (900-2¾)

SC-3, 26 DEC 2024 to 23 JAN 2025

SC-3, 26 DEC 2024 to 23 JAN 2025