

WAAS CH <b>40315</b> <b>W27A</b>	APP CRS <b>274°</b>	Rwy Idg 5502 TDZE 134 Apt Elev 141
--	------------------------	---

# RNAV (GPS) RWY 27

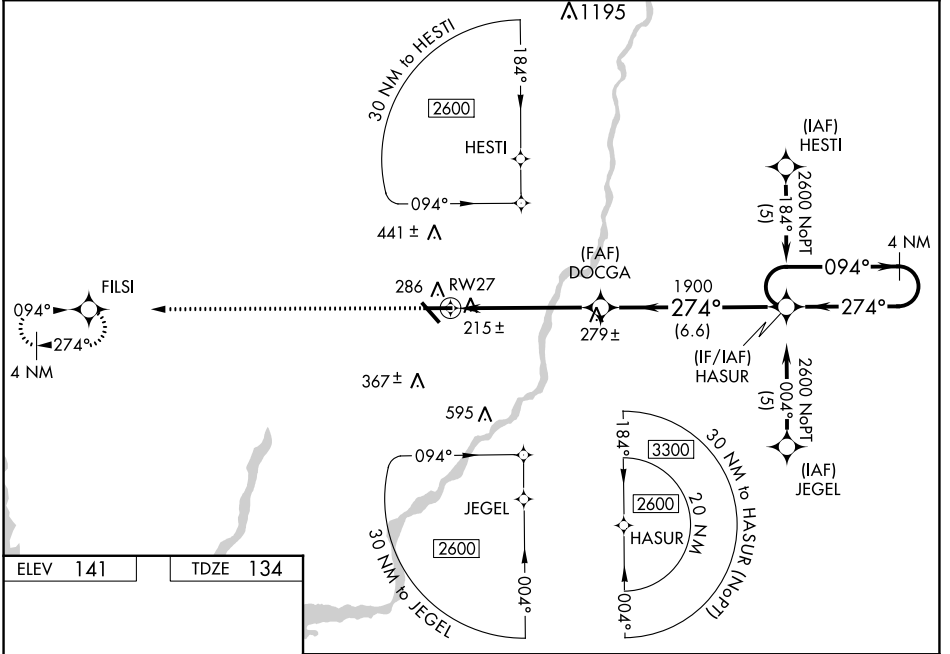
DECATUR COUNTY INDUSTRIAL AIR PARK (BGE)

**⚠** Baro-VNAV NA when using Tallahassee Intl altimeter setting. For uncompensated Baro-VNAV systems, LNAV/VNAV NA below -15°C (5°F) or above 48°C (118°F). DME/DME RNP-0.3 NA. Visibility reduction by helicopters NA. VDP NA when using Tallahassee Intl altimeter setting. When local altimeter setting not received, use Tallahassee Intl altimeter setting and increase LPV DA to 429 feet and LNAV/VNAV DA to 651 feet; increase all MDAs 100 feet and increase LNAV/VNAV all Cats visibility ½ SM, LNAV Cat C visibility ¼ SM and Circling Cat C, D visibility ½ SM. For inoperative MALSRS increase LNAV Cat D visibility to 1¼ mile. For inoperative MALSRS, when using Tallahassee Intl altimeter setting increase LPV all Cats visibility to 1 mile.

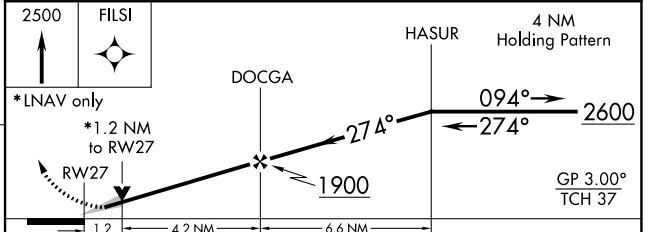
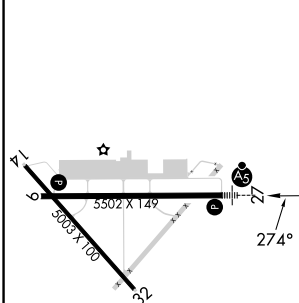
**MALSRS**

**MISSED APPROACH:**  
Climb to 2500 direct FILSI and hold.

AWOS-3PT <b>121.125</b>	TALLAHASSEE APP CON★ <b>128.7 254.3</b>	CLNC DEL <b>124.775 335.65</b>	UNICOM <b>122.975</b> (CTAF)
----------------------------	--	-----------------------------------	---------------------------------



ELEV 141	TDZE 134
----------	----------



CATEGORY	A	B	C	D
LPV DA	334-½		200 (200-½)	
LNAV/VNAV DA	556-1		422 (500-1)	
LNAV MDA	540-½	406 (400-½)	540-¾ 406 (400-¾)	540-1 406 (400-1)
CIRCLING	600-1	459 (500-1)	800-1¾ 659 (700-1¾)	860-2¼ 719 (800-2¼)

HIRL Rwy 9-27

SE-4, 26 DEC 2024 to 23 JAN 2025

SE-4, 26 DEC 2024 to 23 JAN 2025