

WAAS CH 77736 W23A	APP CRS 242°	Rwy Idg TDZE Apt Elev	4000 1180 1180
--	------------------------	-----------------------------	---

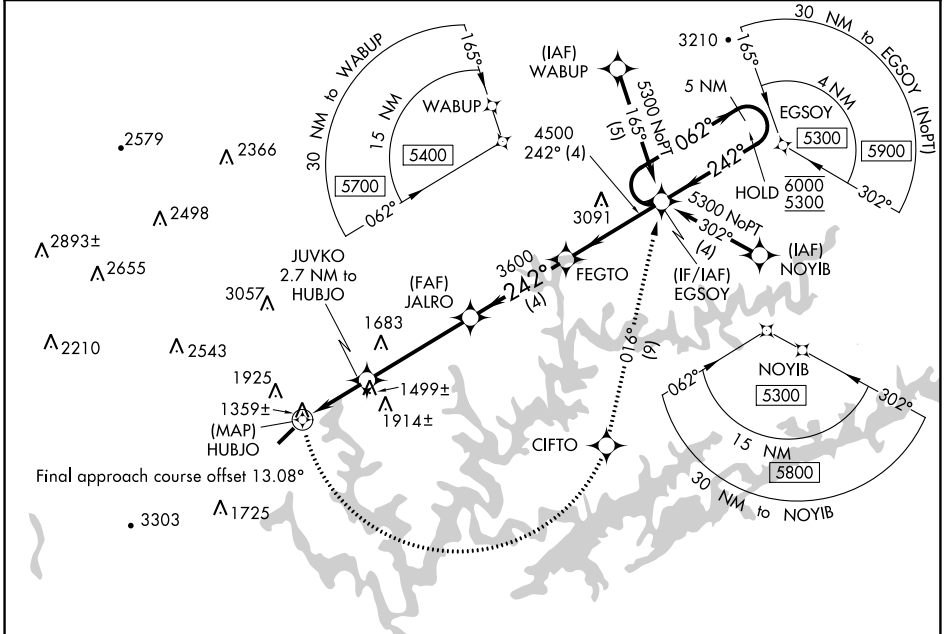
RNAV (GPS) RWY 23

COLONEL TOMMY C STINER AIRFIELD (JAU)

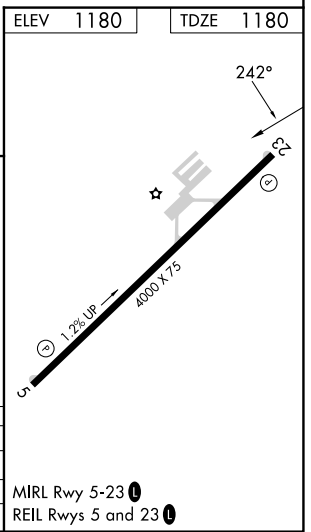
RNP APCH. MISSED APPROACH: Climbing left turn to 5300 direct CIFTO and on track 016° to EGSOY and hold, continue climb-in-hold to 5300.

▼ Circling NA northwest of Rwy 5-23.
Rwy 23 helicopter visibility reduction below 3/4 SM NA.

AWOS-3 124.975	ATLANTA CENTER 133.6 254.3	UNICOM 122.8 (CTAF) 0
--------------------------	--------------------------------------	---------------------------------



ELEV 1180		TDZE 1180	
5300	CIFTO	tr 016°	EGSOY
Visual Segment - Obstacles.			
JUVKO 2.7 NM to HUBJO		JALRO	FEGTO EGSOY 5 NM Holding Pattern
1.4 NM to HUBJO		3600	6000 / 5300
HUBJO		2220	4500
0.5	1.4	1.3	4.3 NM
A		B	
LP MDA 1640-1		460 (500-1)	
LNAV MDA 1920-1		740 (800-1)	
CIRCLING 1920-1		740 (800-1)	



SE-1, 26 DEC 2024 to 23 JAN 2025

SE-1, 26 DEC 2024 to 23 JAN 2025