

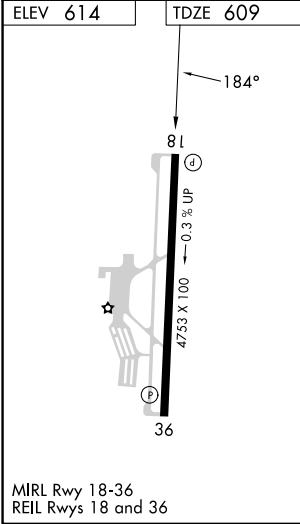
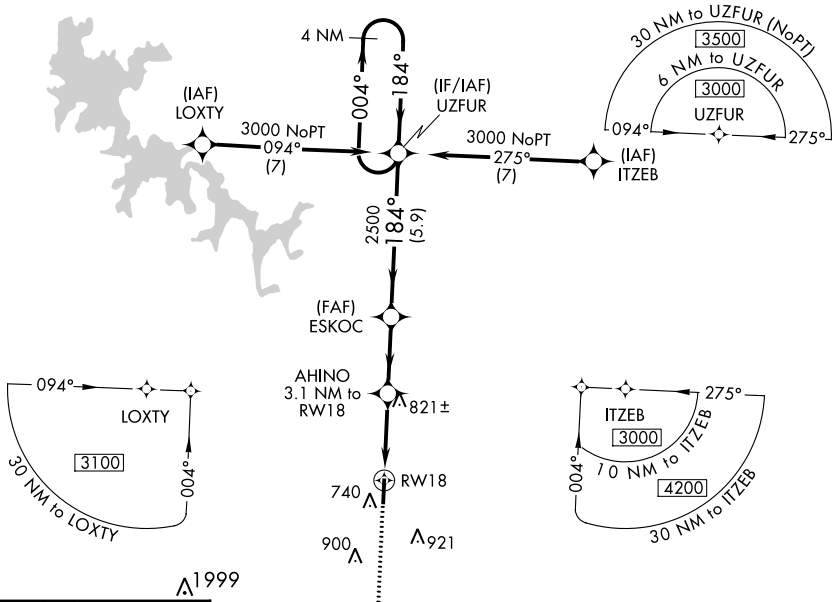
WAAS CH 48812 W18A	APP CRS 184°	Rwy Idg TDZE Apt Elev	4753 609 614
--	------------------------	-----------------------------	---

RNAV (GPS) RWY 18

MURFREESBORO MUNI (MBT)

▼ For uncompensated Baro-VNAV systems, LNAV/VNAV NA below -16°C (4°F) or above 54°C (130°F). DME/DME RNP-0.3 NA. MISSED APPROACH: Climb to 3000 direct URACE and hold.

AWOS-3 133.975	NASHVILLE APP CON 118.4 360.7	GCO 135.075	UNICOM 123.075 (CTAF)
--------------------------	---	-----------------------	---------------------------------



MIRL Rwy 18-36 REIL Rwy 18 and 36		MISSED APCH FIX URACE 4 NM Holding Pattern	
3000 URACE	VGSIs and descent angles not coincident (VGSi Angle 3.00/TCH 18).		4 NM Holding Pattern
URACE	AHINO 3.1 NM to RW18	ESKOC 2500	UZFUR 3000
RW18	*1.4 NM to RW18	*LNAV only.	GP 3.00° TCH 40
1.4	1.7 NM	2.7 NM	5.9 NM
CATEGORY	A	B	C
LPV DA	859-3/4	250 (300-3/4)	NA
LNAV/VNAV DA	898-7/8	289 (300-7/8)	NA
LNAV MDA	1080-1	471 (500-1)	1080-1 3/8 471 (500-1 3/8)
C CIRCLING	1080-1	466 (500-1)	1280-1 3/4 666 (700-1 3/4)

SE-1, 26 DEC 2024 to 23 JAN 2025

SE-1, 26 DEC 2024 to 23 JAN 2025