

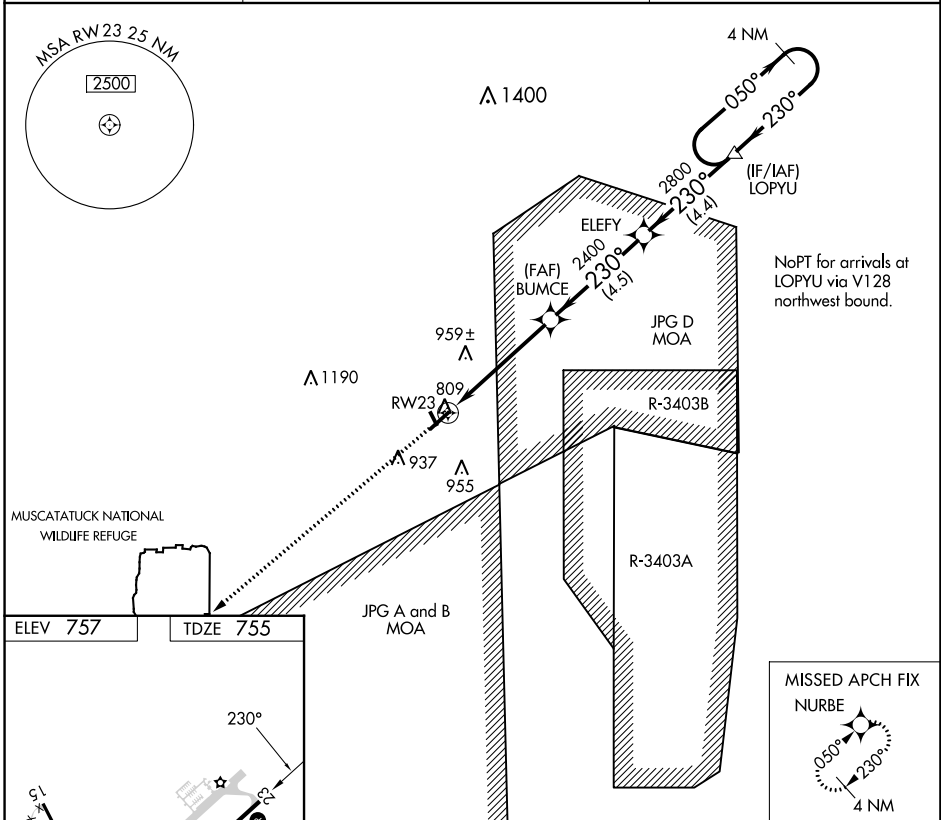
WAAS CH <b>63113</b> <b>W23A</b>	APP CRS <b>230°</b>	Rwy Idg TDZE Apt Elev	<b>5002</b> <b>755</b> <b>757</b>
--	------------------------	-----------------------------	---

# RNAV (GPS) Z RWY 23

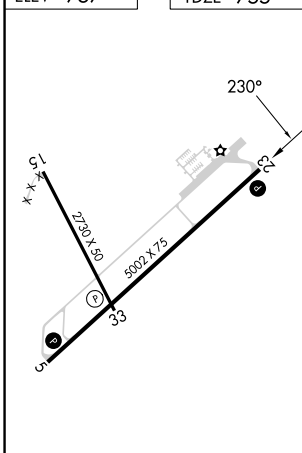
NORTH VERNON (OVO)

<p><b>NA</b> DME/DME RNP-0.3 NA. When local altimeter setting not received, use Shelbyville altimeter setting and increase all DA 84 feet and all visibility 1/4 mile.</p>	<p>MISSED APPROACH: Climb to 2700 direct NURBE and hold.</p>
--	--

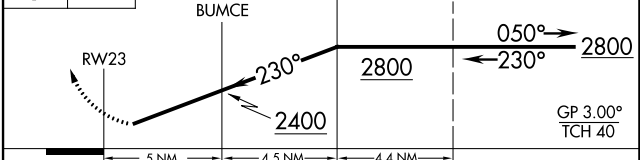
<p>AWOS-3 <b>120.625</b></p>	<p>INDIANAPOLIS APP CON <b>134.85 317.8</b></p>	<p>UNICOM <b>122.7 (CTAF)</b></p>
----------------------------------	---	---------------------------------------



ELEV 757 TDZE 755



2700	NURBE	VGSI and RNAV glidepath not coincident (VGSI Angle 3.00/TCH 27).	4 NM Holding Pattern
------	-------	--	----------------------



CATEGORY	A	B	C	D
LPV DA	1005-1 250 (300-1)			NA

MIRL Rwy 5-23  
MIRL Rwy 15-33

EC-2, 26 DEC 2024 to 23 JAN 2025

EC-2, 26 DEC 2024 to 23 JAN 2025