

NDB EOE	APP CRS	Rwy Idg	<b>4001</b>
<b>278</b>	<b>213°</b>	TDZE	<b>570</b>
		Apt Elev	<b>570</b>

# NDB RWY 22

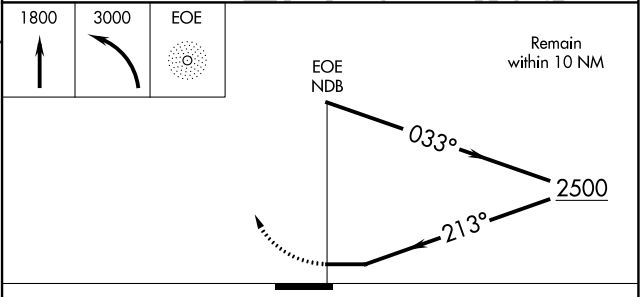
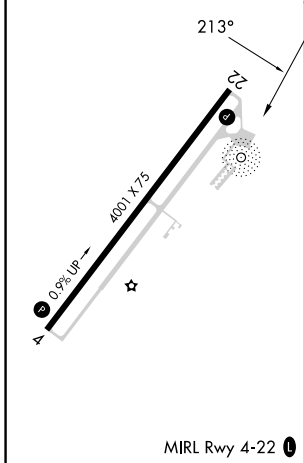
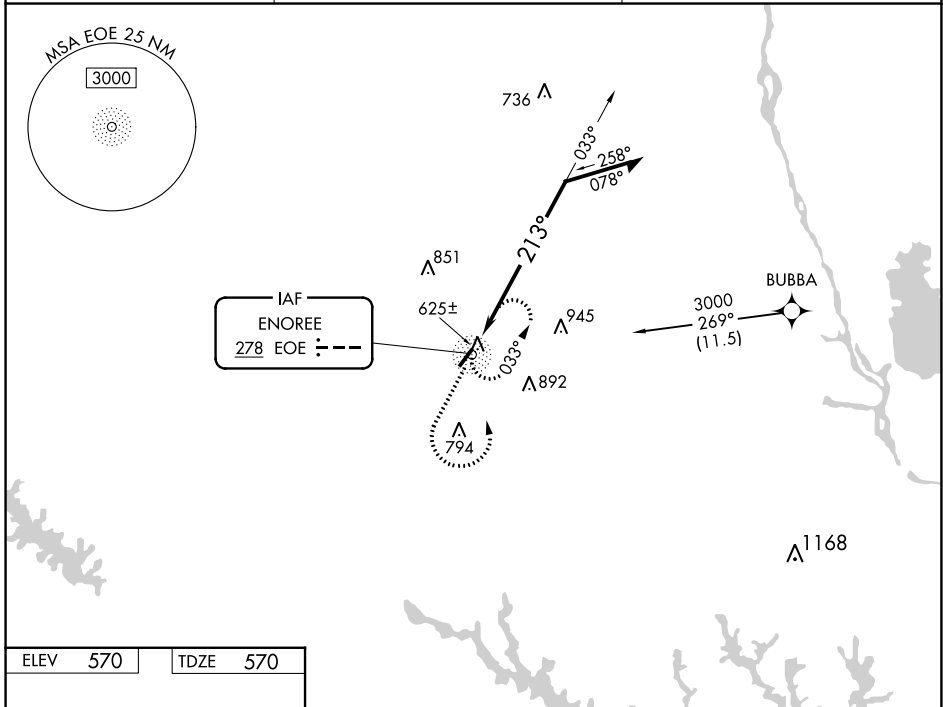
NEWBERRY COUNTY (EOE)

RNAV 1 - GPS or RADAR required for procedure entry.

**▼** Rwy 22 helicopter visibility reduction below 3/4 SM NA. When local altimeter setting not received, use Greenwood altimeter setting and increase all MDAs 80 feet.

**MISSED APPROACH:** Climb to 1800 then climbing left turn to 3000 direct EOE NDB and hold.

AWOS-3 <b>124.275</b>	COLUMBIA APP CON <b>133.4 285.6</b>	UNICOM <b>122.8 (CTAF) 0</b>
--------------------------	--	---------------------------------



CATEGORY	A	B	C	D
S-22	1100-1	530 (600-1)	NA	
<b>C</b> CIRCLING	1100-1	1160-1	NA	
	530 (600-1)	590 (600-1)		

SE-2, 26 DEC 2024 to 23 JAN 2025

SE-2, 26 DEC 2024 to 23 JAN 2025