

| | | |
|-------------|----------|-------------|
| APP CRS | Rwy Idg | 4001 |
| 044° | TDZE | 558 |
| | Apt Elev | 570 |

RNAV (GPS) RWY 4

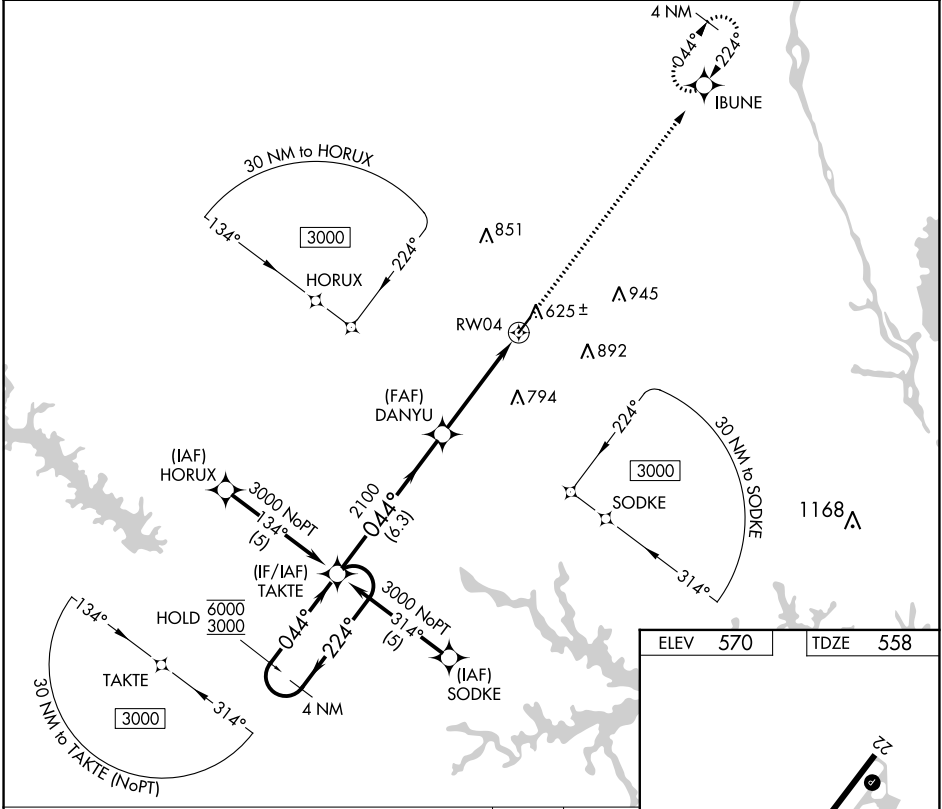
NEWBERRY COUNTY (EOE)

RNP APCH - GPS

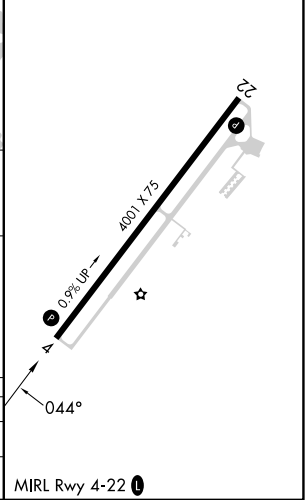
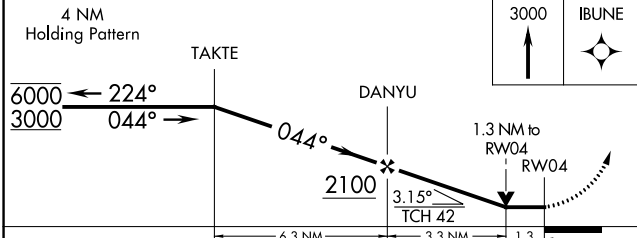
⚠ Rwy 4 helicopter visibility reduction below 3/4 SM NA. VDP NA when using GRD altimeter setting. When local altimeter setting not received, use GRD altimeter setting and increase all MDA 80 feet.

MISSED APPROACH: Climb to 3000 direct IBUNE and hold.

| | | |
|----------------|--------------------|-----------------------|
| AWOS-3 | COLUMBIA APP CON | UNICOM |
| 124.275 | 133.4 285.6 | 122.8 (CTAF) 0 |



| | | | |
|------|-----|------|-----|
| ELEV | 570 | TDZE | 558 |
|------|-----|------|-----|



| CATEGORY | A | B | C | D |
|----------|-----------------------|-----------------------|---|----|
| LNVA MDA | 1000-1 | 442 (500-1) | | NA |
| CIRCLING | 1080-1 510 (600-1) | 1160-1 590 (600-1) | | NA |

SE-2, 26 DEC 2024 to 23 JAN 2025

SE-2, 26 DEC 2024 to 23 JAN 2025