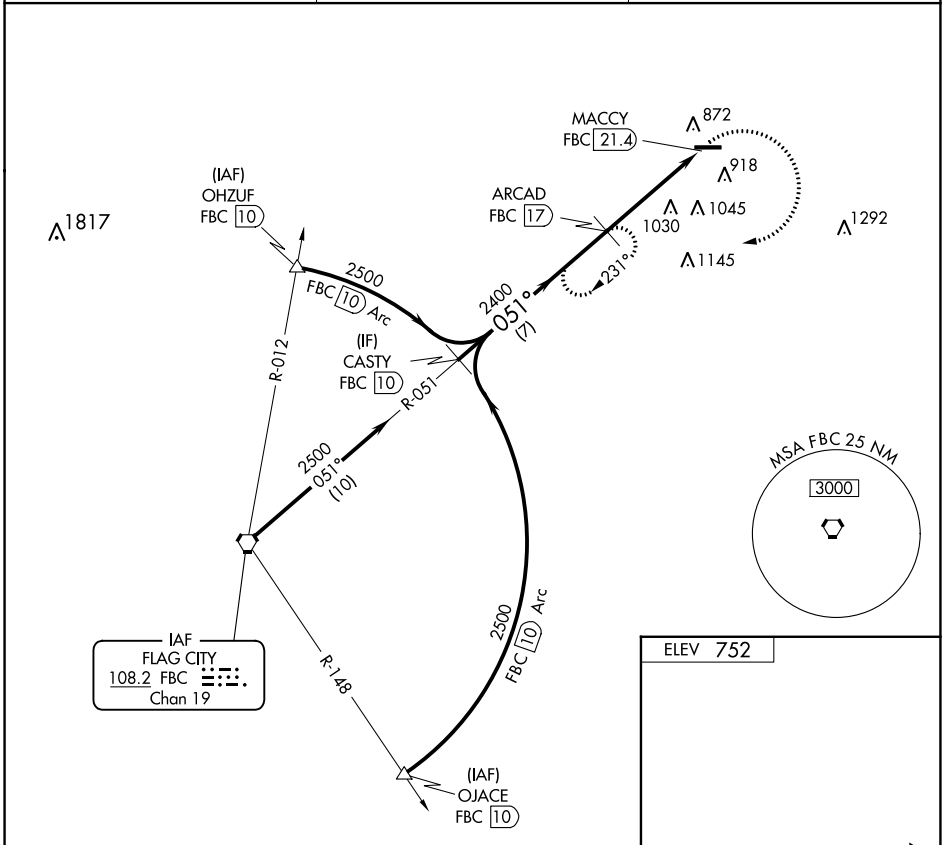


VORTAC FBC <b>108.2</b> Chan <b>19</b>	APP CRS <b>051°</b>	Rwy Idg TDZE Apt Elev	<b>N/A</b> <b>N/A</b> <b>752</b>
--	------------------------	-----------------------------	--

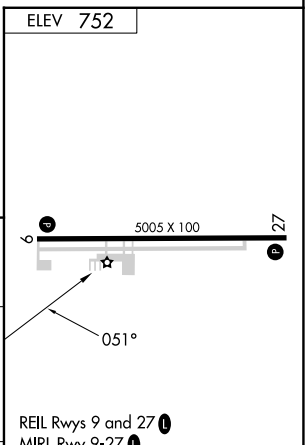
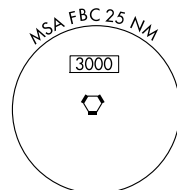
**VOR-A**  
FOSTORIA METRO (F'ZI)

DME required.		MISSED APPROACH: Climbing right turn to 2400 on FBC VORTAC R-051 to ARCAD/FBC 17 DME and hold.
▼ ▲ NA	When local altimeter setting not received, use Findlay altimeter setting and increase all MDA 60 feet, and increase Cat C visibility ¼ mile.	

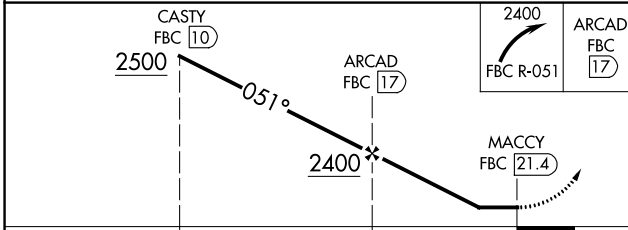
AWOS-3 <b>124.625</b>	TOLEDO APP CON <b>126.1 307.0</b>	UNICOM <b>122.7 (CTAF) 0</b>
--------------------------	--------------------------------------	---------------------------------



IAF  
FLAG CITY  
108.2 FBC [Symbol]  
Chan 19



ELEV 752	FAF to MAP 4.4 NM					
	Knots	60	90	120	150	180
	Min:Sec	4:24	2:56	2:12	1:46	1:28



CATEGORY	A	B	C	D	FAF to MAP 4.4 NM					
◻ CIRCLING	1400-1 648 (700-1)	1400-1¼ 648 (700-1¼)	1400-1¾ 648 (700-1¾)	NA	Knots	60	90	120	150	180
					Min:Sec	4:24	2:56	2:12	1:46	1:28

EC-2, 26 DEC 2024 to 23 JAN 2025

EC-2, 26 DEC 2024 to 23 JAN 2025