

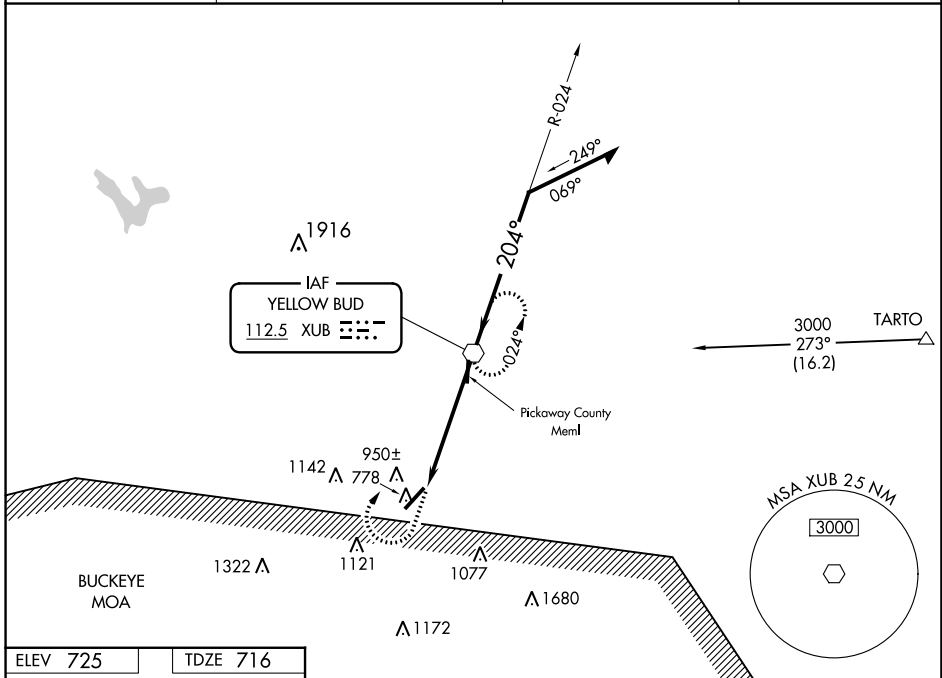
VOR XUB <b>112.5</b>	APP CRS <b>204°</b>	Rwy Idg TDZE Apt Elev	<b>5405</b> <b>716</b> <b>725</b>
-------------------------	------------------------	-----------------------------	---

**VOR RWY 23**  
ROSS COUNTY (R/ZT)

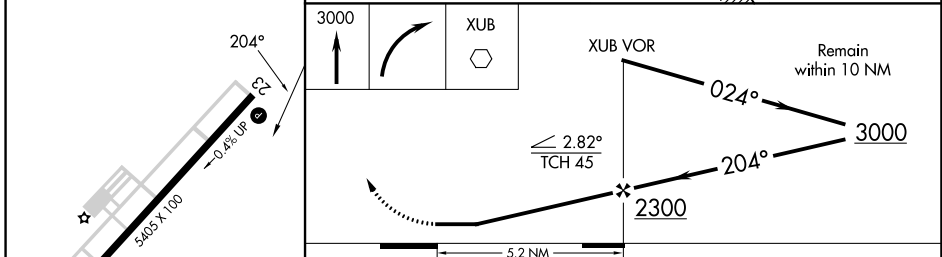
**NA** When local altimeter setting not received, use Rickenbacker Intl altimeter setting. When VGSI is inop, Straight-in and Circling Rwy 23 procedures NA at night.

MISSED APPROACH: Climb to 3000 then right turn direct XUB VOR and hold.

AWOS-3 <b>119.225</b>	COLUMBUS APP CON <b>134.0 279.6</b>	UNICOM <b>122.8</b> (CTAF)	<b>123.0</b> <b>0</b>
--------------------------	--	-------------------------------	-----------------------



ELEV 725	TDZE 716
----------	----------



CATEGORY	A		B		C		D	
	S-23	1220-1	504 (500-1)	1220-1½	504 (500-1½)			
CIRCLING	1340-1	615 (700-1)	1360-1	635 (700-1)	1500-2¼	775 (800-2¼)	1540-2¾	815 (900-2¾)
	RICKENBACKER INTL ALTIMETER SETTING MINIMUMS							
S-23	1280-1	564 (600-1)	1280-1⅝	564 (600-1⅝)				
CIRCLING	1400-1	675 (700-1)	1420-1	695 (700-1)	1560-2½	835 (900-2½)	1600-2¾	875 (900-2¾)

REIL Rwys 5 and 23 **0**  
MIRL Rwy 5-23 **0**

FAF to MAP 5.2 NM

Knots	60	90	120	150	180
Min:Sec	5:12	3:28	2:36	2:05	1:44

EC-2, 26 DEC 2024 to 23 JAN 2025

EC-2, 26 DEC 2024 to 23 JAN 2025