

| | | |
|--|------------------------|---|
| WAAS CH 48900 W01A | APP CRS 005° | Rwy Idg 3001 TDZE 228 Apt Elev 228 |
|--|------------------------|---|

RNAV (GPS) RWY 1

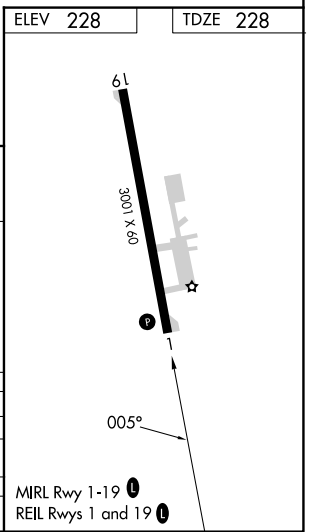
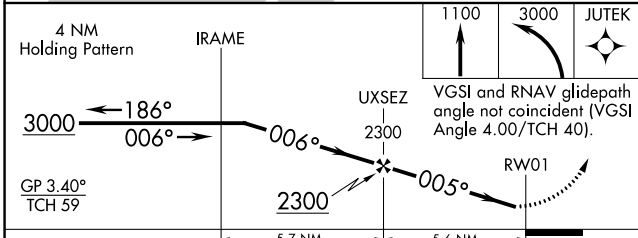
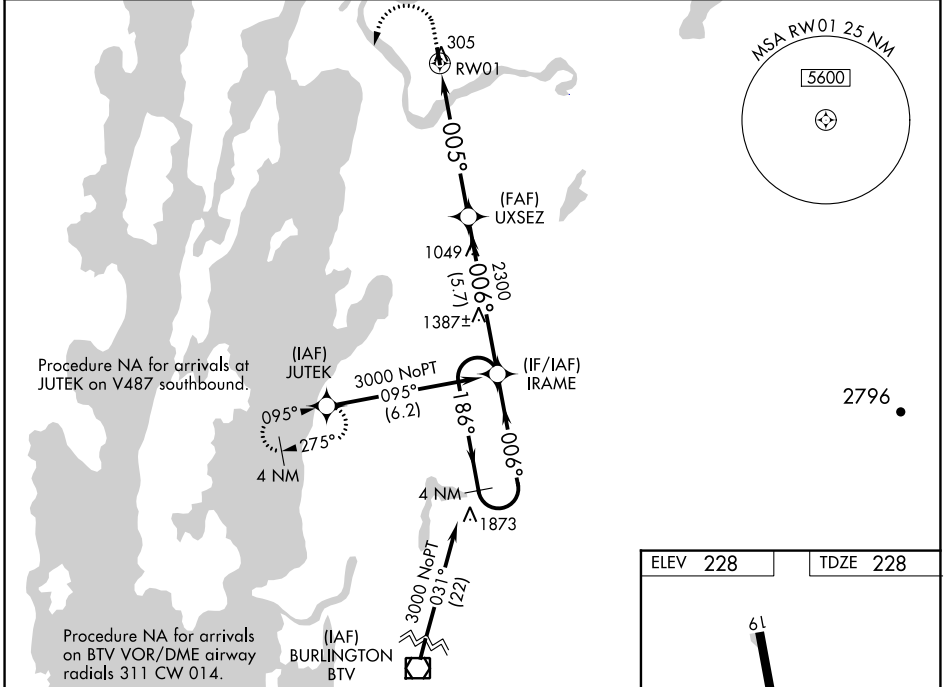
FRANKLIN COUNTY STATE (F'SO)

RNP APCH-GPS.

▼ For uncompensated Baro-VNAV systems, LNAV/VNAV NA below -1.5°C or above 54°C.
▲ Rwy 1 helicopter visibility reduction below 1 SM NA.
Procedure NA at night.

MISSED APPROACH: Climb to 1100 then climbing left turn to 3000 direct JUTEK and hold.

| | | |
|--------------------------|--|--|
| AWOS-3 119.025 | BURLINGTON APP CON★ 121.1 (EAST) 278.8 (WEST) 360.8 | UNICOM 122.8 (CTAF) 0 |
|--------------------------|--|--|



| CATEGORY | A | B | C | D |
|--------------|-------------|--------------|---|----|
| LPV DA | 512-1 | 284 (300-1) | | NA |
| LNAV/VNAV DA | 1024-2½ | 796 (800-2½) | | NA |
| LNAV MDA | 920-1 | 692 (700-1) | | NA |
| CIRCLING | 920-1 | 960-1 | | |
| | 692 (700-1) | 732 (800-1) | | NA |

NE-1, 26 DEC 2024 to 23 JAN 2025

NE-1, 26 DEC 2024 to 23 JAN 2025