

WAAS CH 58228 W36A	APP CRS 357°	Rwy Idg TDZE Apt Elev	4100 1242 1250
--	------------------------	-----------------------------	---

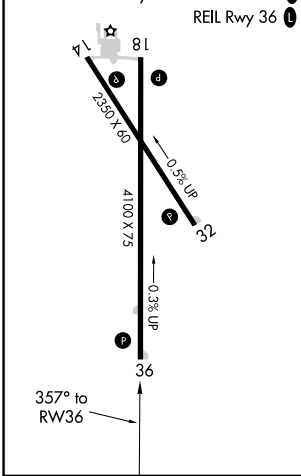
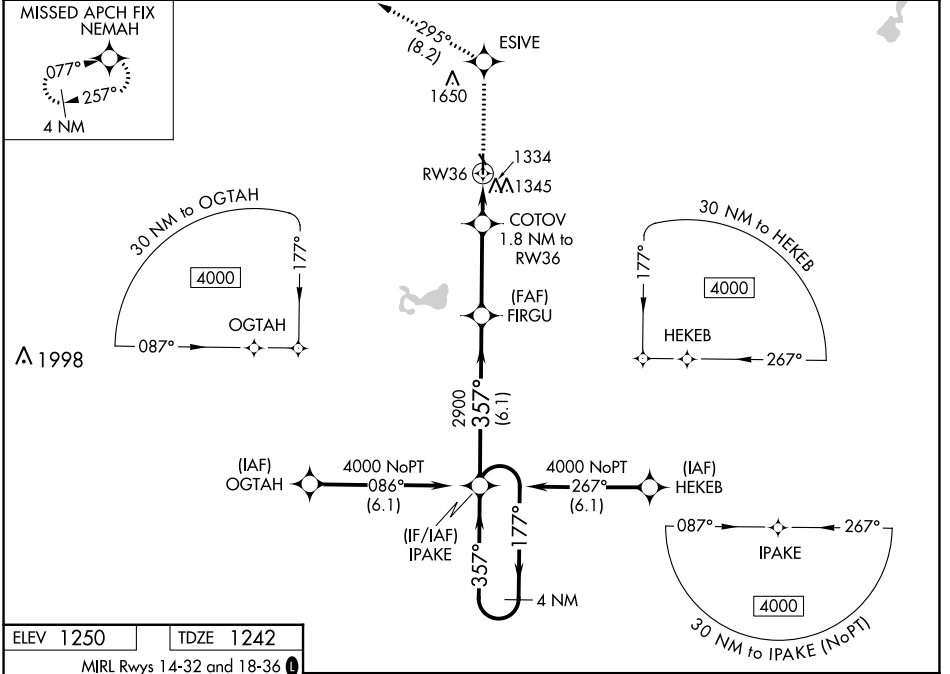
RNAV (GPS) RWY 36

SAC CITY MUNI (SKI)

▼ Night landing: Rwy 14 NA. Baro-VNAV NA. DME/DME RNP-0.3 NA.
▲ NA Use Carroll altimeter setting; when not received, use Denison altimeter setting and increase all DA 15 feet and all MDA 20 feet, increase LNAV/VNAV visibility 1/8 mile all Cats.

MISSED APPROACH: Climb to 4000 direct ESIVE and on track 295° to NEMAH and hold.

CIN AWOS-3 118.025	MINNEAPOLIS CENTER 134.0 288.3	UNICOM 122.8 (CTAF) 0
------------------------------	--	---------------------------------



VGSi and RNAV glidepath not coincident (VGSi Angle 3.00/TCH 28).				4000	ESIVE	tr 295°	NEMAH
4 NM Holding Pattern IPAKE				↑	◆	↖	△
4000 ← 177° → 357°				FIRGU 2900	*LNAV only		
GP 3.00° TCH 40				357°	COTOV 1.8 NM to RW36	RW36	
				2900	*1820		
				6.1 NM	3.3 NM	1.8 NM	
CATEGORY	A	B	C	D			
LPV DA	1499-1	257 (300-1)	NA				
LNAV/VNAV DA	1549-1	307 (300-1)	NA				
LNAV MDA	1660-1	418 (500-1)	NA				
CIRCLING	1740-1	490 (500-1)	NA				

NC-3, 26 DEC 2024 to 23 JAN 2025

NC-3, 26 DEC 2024 to 23 JAN 2025