

WAAS CH 58029 W34A	APP CRS 338°	Rwy Idg TDZE Apt Elev	3977 2801 2805
--	------------------------	-----------------------------	---

RNAV (GPS) RWY 34

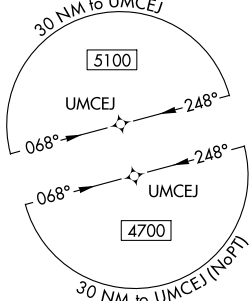
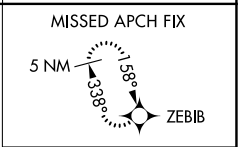
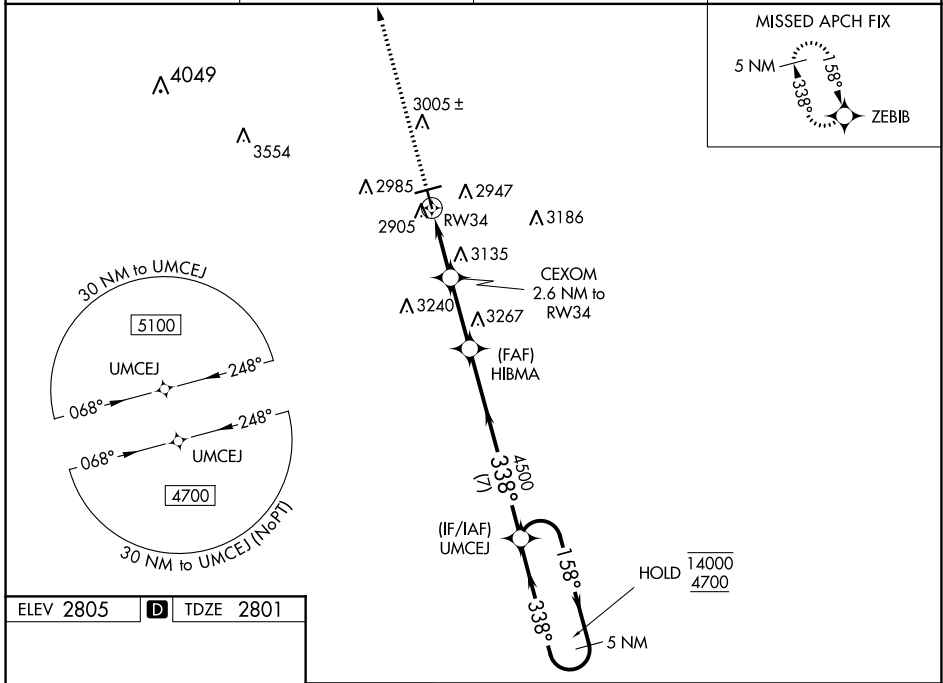
MIDLAND AIRPARK (MIDD)

RNP APCH.

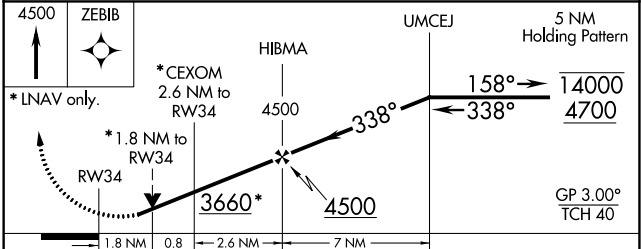
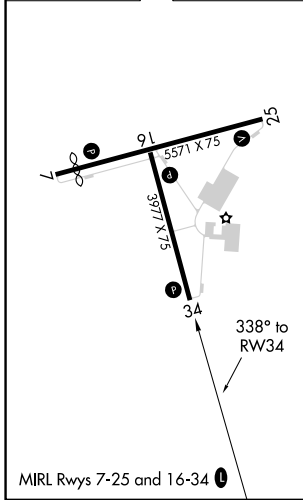
⚠ Rwy 34 helicopter visibility reduction below $\frac{3}{4}$ SM NA. Baro-VNAV NA when using Midland Intl altimeter setting. For uncompensated Baro-VNAV systems, procedure NA below -20°C or above 54°C. VDP NA with Midland Intl altimeter setting. When local altimeter setting not received, use Midland Intl altimeter setting and increase LPV DA to 3078 and LNAV/VNAV DA to 3262; increase all MDAs 40 feet and LNAV/VNAV visibility $\frac{1}{8}$ SM all Cats.

⚠ MISSED APPROACH: Climb to 4500 direct ZEBIB and hold.

AWOS-3 118.125	MIDLAND APP CON * 124.6 290.4	CLNC DEL 121.8	UNICOM 122.7 (CTAF) 0
--------------------------	---	--------------------------	---------------------------------



ELEV 2805	D	TDZE 2801
-----------	----------	-----------



CATEGORY	A	B	C	D
LPV DA	3051- $\frac{7}{8}$	250 (300- $\frac{7}{8}$)		NA
LNNAV/VNAV DA	3235-1 $\frac{1}{4}$	434 (500-1 $\frac{1}{4}$)		NA
LNNAV MDA	3400-1	599 (600-1)		NA
C CIRCLING	3400-1	595 (600-1)		NA

SC-3, 26 DEC 2024 to 23 JAN 2025

SC-3, 26 DEC 2024 to 23 JAN 2025