

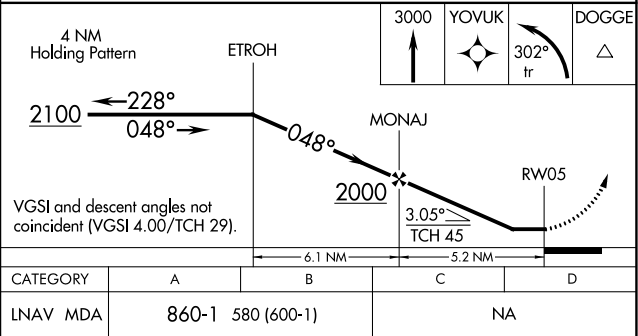
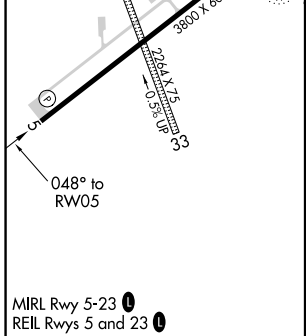
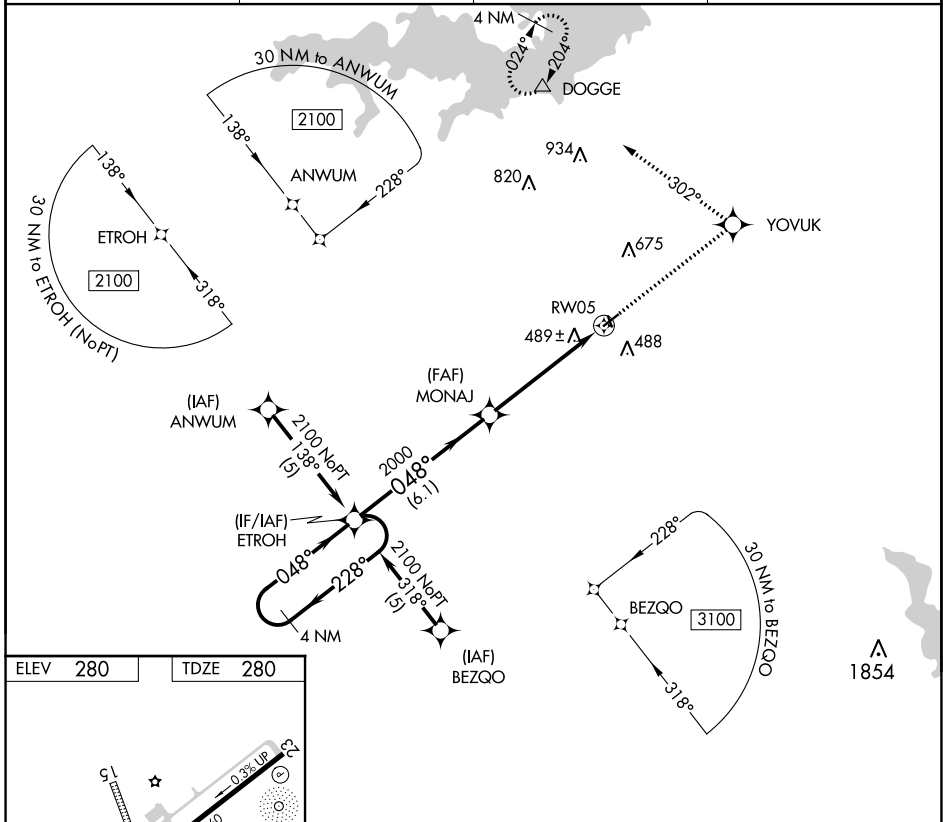
APP CRS	Rwy Idg	3800
048°	TDZE	280
	Apt Elev	280

RNAV (GPS) RWY 5

HALL-MILLER MUNI (ATA)

RNP APCH.		MISSED APPROACH: Climb to 3000 direct YOYUK and left turn via 302° track to DOGGE and hold.
<p>▼ Rwy 5 helicopter visibility reduction below 3/4 SM NA. Use Texarkana altimeter setting, when not received use Mount Pleasant altimeter setting and increase all MDA 40 feet.</p> <p>▲ NA</p>		

AWOS-3 118.250	TXK ASOS 120.2	FORT WORTH CENTER 123.925 269.475	CTAF 122.9
--------------------------	--------------------------	---	----------------------



SC-2, 26 DEC 2024 to 23 JAN 2025

SC-2, 26 DEC 2024 to 23 JAN 2025