

WAAS CH 81935 W26A	APP CRS 259°	Rwy Idg TDZE Apt Elev	4051 696 698
--	------------------------	-----------------------------	---

RNAV (GPS) RWY 26

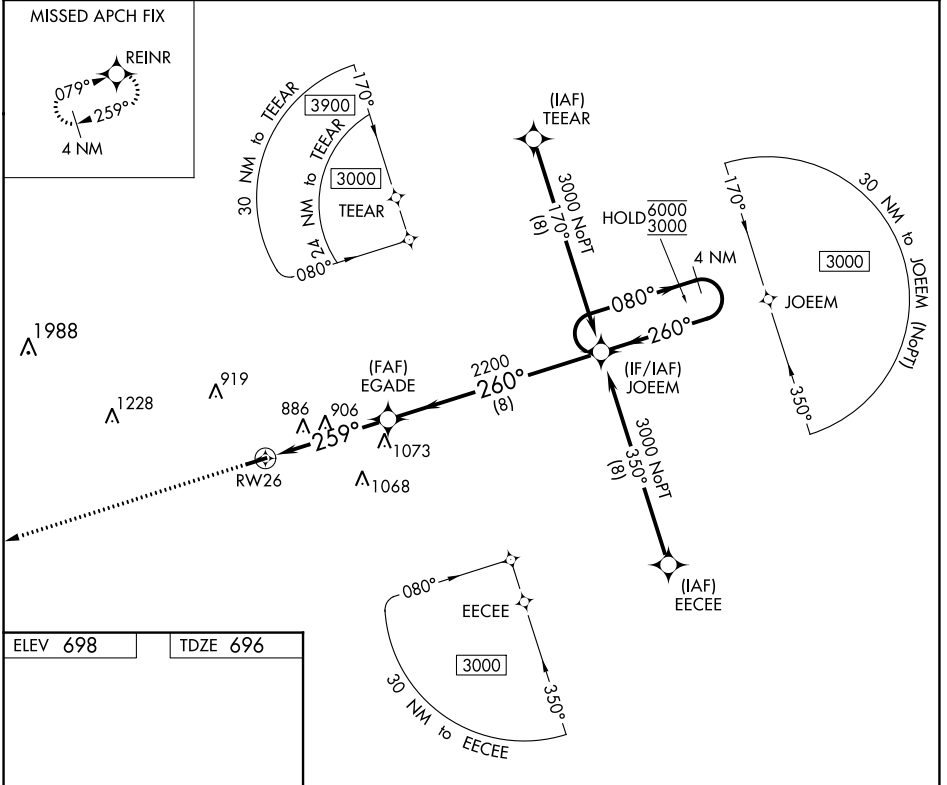
LAURENS COUNTY (LUX)

RNP APCH-GPS.

▼ Rwy 26 helicopter visibility reduction below 3/4 SM NA.

MISSED APPROACH: Climb to 3000 direct REINR and hold.

AWOS-3 123.975	GREER APP CON ★ 120.6 350.2	UNICOM 122.8 (CTAF) 0
--------------------------	---------------------------------------	---------------------------------



ELEV 698 TDZE 696

REIL Rwys 8 and 26 0
MIRL Rwy 8-26 0

3000 REINR VGSI and descent angles not coincident (VGSI Angle 3.25/TCH 53).

4 NM Holding Pattern

JOEEM

080° → 6000
← 260° 3000

EGADDE 2200

1.2 NM to RW26
RW26
259°
3.00° TCH 39

1.2 3.4 NM 8 NM

CATEGORY	A	B	C	D
LP MDA	1160-1	464 (500-1)		NA
LNAV MDA	1160-1	464 (500-1)		NA
<input checked="" type="checkbox"/> CIRCLING	1200-1	502 (600-1)		NA

SE-2, 26 DEC 2024 to 23 JAN 2025

SE-2, 26 DEC 2024 to 23 JAN 2025