

APP CRS	Rwy Idg	6600
258°	TDZE	9
	Apt Elev	9

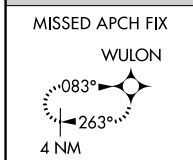
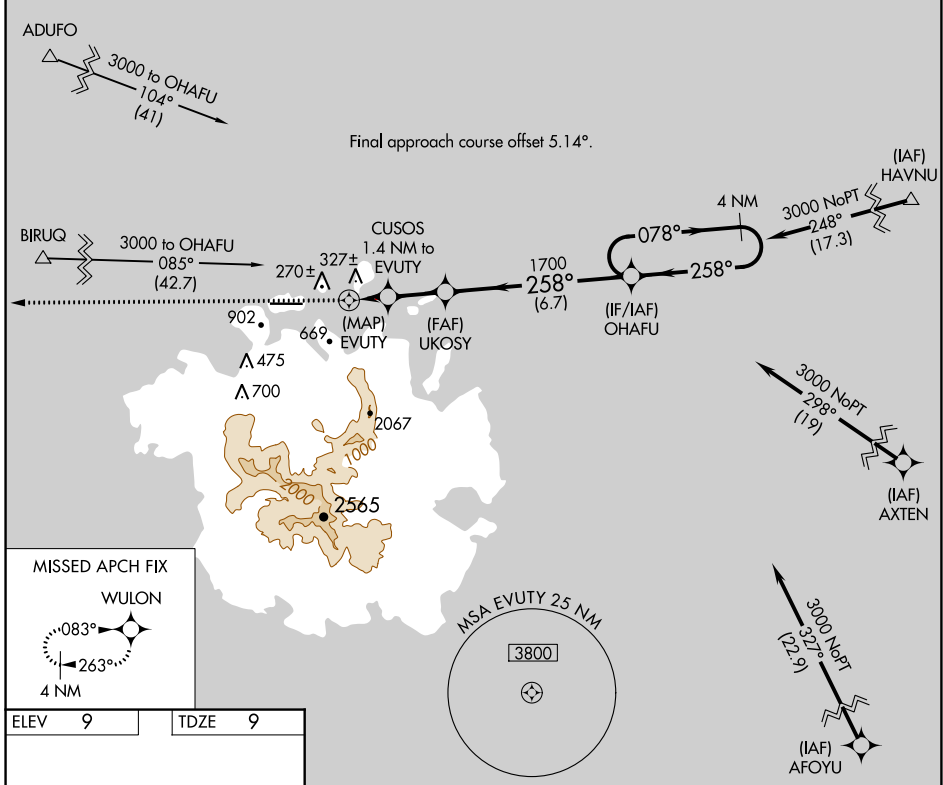
RNAV (GPS) RWY 27

POHNPEI INTL (PNI)(PTPN)

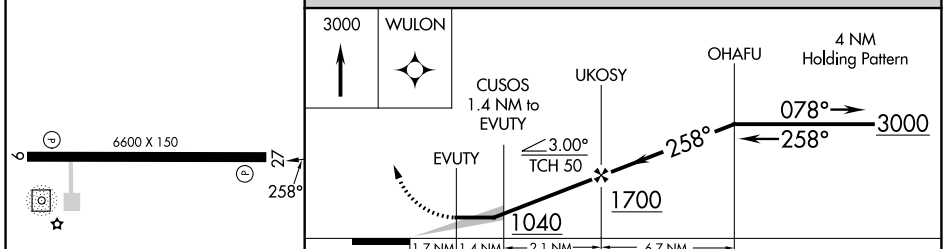
⚠ Obtain local altimeter setting on CTAF; when not received, procedure NA. Circling NA south of Rwy 9-27. Procedure NA at night except by prior arrangement for runway lights. DME/DME RNP-0.3 NA. No controlled airspace below 5500. Ships with maximum height of 150 feet MSL may traverse Pohnpei Channel 400 feet off approach end of runway 9, closing airport at times.

MISSED APPROACH:
Climb to 3000 direct WULON and hold.

POHNPEI RADIO
123.6 (CTAF) 0



ELEV	9	TDZE	9
------	---	------	---



CATEGORY	A	B	C	D
LNAV MDA	720-2 711 (800-2)			
C CIRCLING	720-2	711 (800-2)	720-2¼ 711 (800-2¼)	

PAC, 26 DEC 2024 to 20 FEB 2025

PAC, 26 DEC 2024 to 20 FEB 2025