

VORTAC EHF 115.4 Chan 101	APP CRS 322°	Rwy ldg TDZE 315 Apt Elev 316
---	------------------------	---

VOR RWY 33

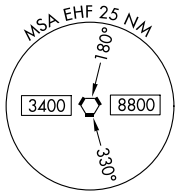
DELANO MUNI (DLO)

DME required.

▼ Circling NA southwest of Rwy 15-33.
▲ When local altimeter setting not received, procedure NA.

MISSED APPROACH: Climb to 1200 then climbing right turn to 2400 on EHF VORTAC R-322 to JUTTY INT/EHF 11.4 DME and hold. Continue climb-in-hold to 2400.

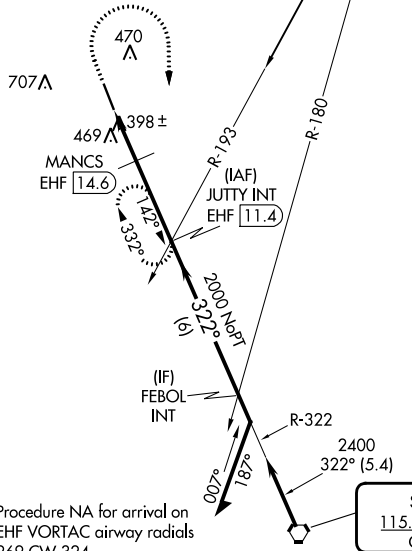
AWOS-3P 119.55	BAKERSFIELD APP CON* 118.9	UNICOM 122.8 (CTAF) 0
--------------------------	--------------------------------------	--



TULE
116.25 TTE =
Chan 109(Y)

2412

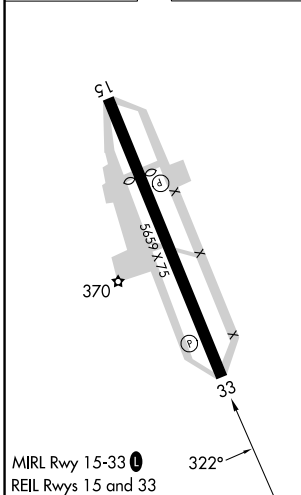
Procedure NA for arrival on TTE VOR/DME
airway radial 147.



Procedure NA for arrival on
EHF VORTAC airway radials
269 CW 324.

IAF
SHAFTER
115.4 EHF ::::.
Chan 101

ELEV 316	TDZE 315
----------	----------



1200	2400	JUTTY INT	JUTTY INT EHF 11.4	VGSI and descent angles not coincident.
↑	EHF R-322			Remain within 10 NM
	MANCS EHF 14.6	3.00° TCH 40	FEBOL INT	142°
	EHF 16.6			322°
	1000	2000	2400	
	2 NM	3.1 NM	6 NM	
CATEGORY	A	B	C	D
S-33	860-1 545 (600-1)		860-1½ 545 (600-1½)	
CIRCLING	860-1 544 (600-1)		860-1½ 544 (600-1½)	960-2 644 (700-2)

SW-3, 26 DEC 2024 to 23 JAN 2025

SW-3, 26 DEC 2024 to 23 JAN 2025