

PUNTA GORDA, FLORIDA

AL-6178 (FAA)

24249

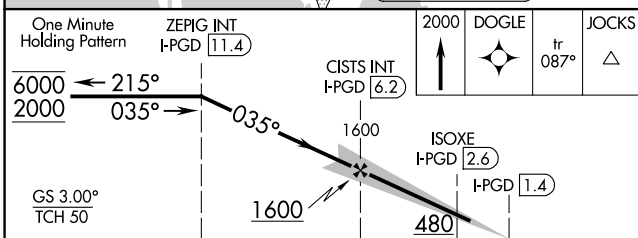
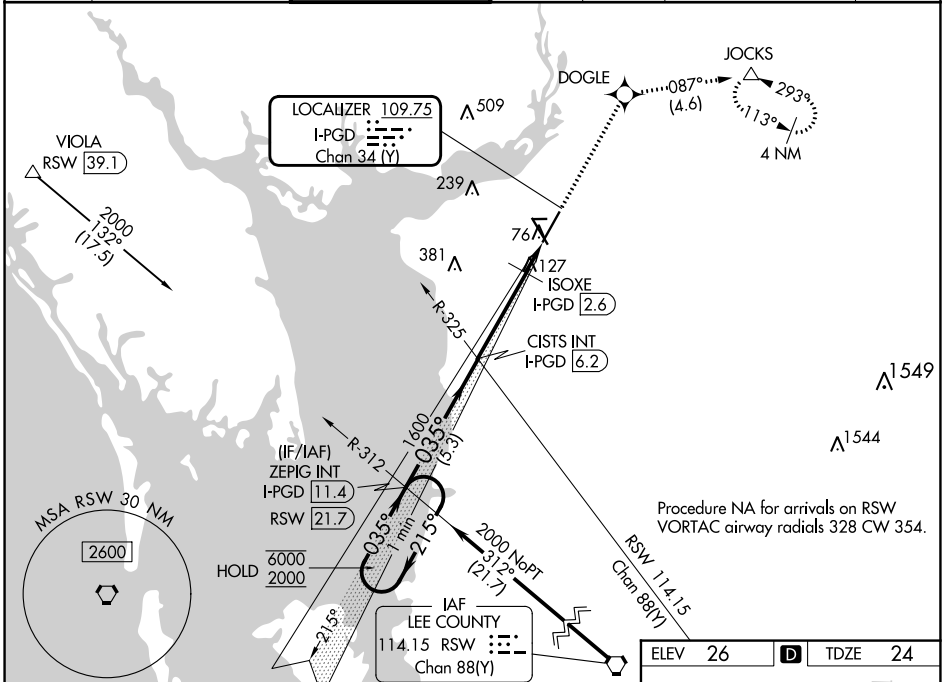
LOC/DME I-PGD 109.75 Chan 34 (Y)	APP CRS 035°	Rwy Idg TDZE Apt Elev	7193 24 26
--	------------------------	-----------------------------	---------------------------------------

ILS or LOC RWY 4

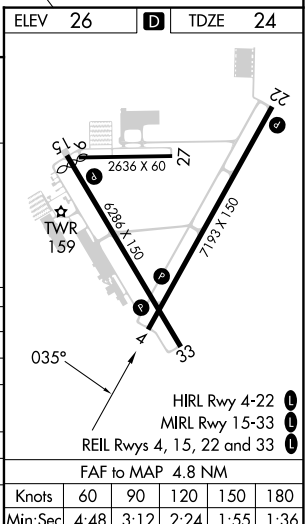
PUNTA GORDA (PGD)

RNP APCH - GPS.		MISSED APPROACH: Climb to 2000 direct DOGLE and on track 087° to JOCKS and hold.			
-----------------	--	--	--	--	--

ATIS ★ 135.675	FORT MYERS APP CON ★ 127.05 306.2	PUNTA GORDA TOWER ★ 121.0 (CTAF) 0	GND CON 119.55	CLNC DEL 119.55	CLNC DEL 127.05 (When twr closed)	UNICOM 122.975
--------------------------	---	--	--------------------------	---------------------------	--	--------------------------



CATEGORY	A	B	C	D
S-ILS 4		256-3/4	232 (300-3/4)	
S-LOC 4	480-1	456 (500-1)	480-1 3/8	456 (500-1 3/8)
CIRCLING	480-1	580-1	600-1 1/2	740-2 1/4
	454 (500-1)	554 (600-1)	574 (600-1 1/2)	714 (800-2 1/4)
ISOXE FIX MINIMUMS (DME REQUIRED)				
S-LOC 4	380-1 356 (400-1)			
CIRCLING	460-1	580-1	600-1 1/2	740-2 1/4
	434 (500-1)	554 (600-1)	574 (600-1 1/2)	714 (800-2 1/4)



SE-3, 26 DEC 2024 to 23 JAN 2025

SE-3, 26 DEC 2024 to 23 JAN 2025

PUNTA GORDA, FLORIDA
Amdt 1 05SEP24

26°55'N-81°59'W

PUNTA GORDA (PGD)

ILS or LOC RWY 4

Knots	60	90	120	150	180
Min:Sec	4:48	3:12	2:24	1:55	1:36