

WAAS CH <b>48807</b> <b>W04A</b>	APP CRS <b>035°</b>	Rwy Idg TDZE Apt Elev	<b>7193</b> <b>24</b> <b>26</b>
--	------------------------	-----------------------------	---------------------------------------

# RNAV (GPS) RWY 4

PUNTA GORDA (PGD)

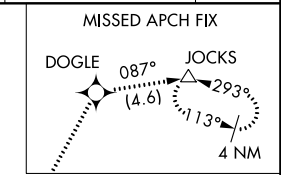
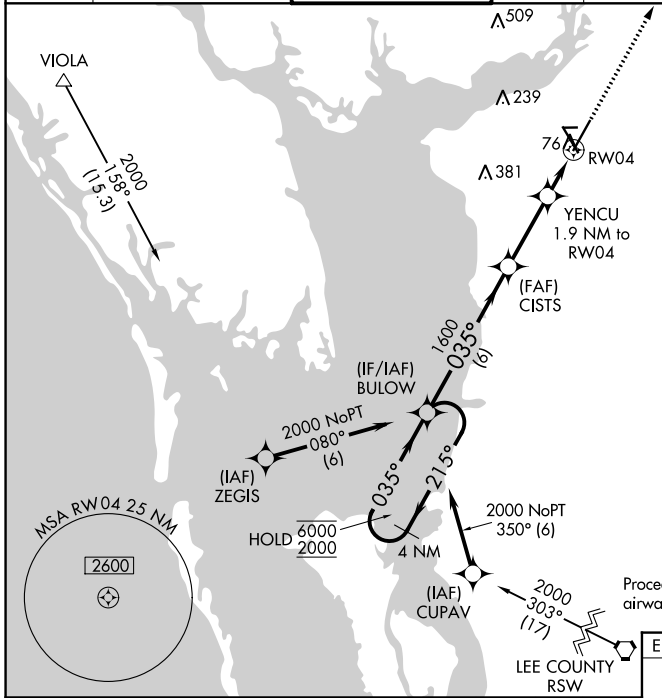
RNP APCH - GPS.

**▽**  
**▲** For uncompensated Baro-VNAV systems, LNAV/VNAV NA below 3°C or above 54°C.

MISSED APPROACH: Climb to 2000 direct DOGLE and on track 087° to JOCKS and hold.

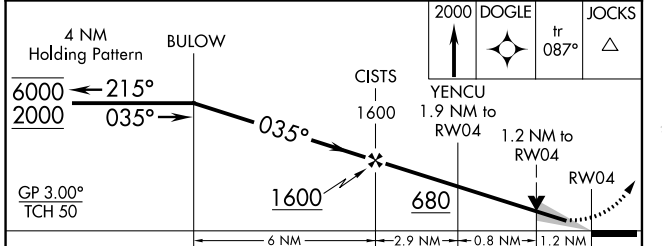
ATIS ★ <b>135.675</b>	FORT MYERS APP CON ★ <b>127.05 306.2</b>	<b>PUNTA GORDA TOWER ★</b> <b>121.0 (CTAF) 0</b>	GND CON <b>119.55</b>	CLNC DEL <b>119.55</b>
--------------------------	---	---	--------------------------	---------------------------

CLNC DEL <b>127.05</b> (When twr closed)	UNICOM <b>122.975</b>
--	--------------------------



SE-3, 26 DEC 2024 to 23 JAN 2025

SE-3, 26 DEC 2024 to 23 JAN 2025

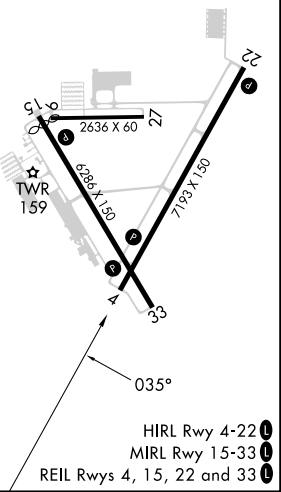


1549 ▲  
▲ 1544

Procedure NA for arrival on RSW VORTAC airway radials 312 CW 016.

ELEV 26	<b>D</b> TDZE 24
---------	------------------

CATEGORY	A	B	C	D
LPV DA		256- <sup>3</sup> / <sub>4</sub>	232 (300- <sup>3</sup> / <sub>4</sub> )	
LNAV/VNAV DA		393-1	369 (400-1)	
LNAV MDA	440-1	416 (500-1)	440-1 <sup>1</sup> / <sub>8</sub>	416 (500-1 <sup>1</sup> / <sub>8</sub> )
<b>C</b> CIRCLING	460-1 434 (500-1)	580-1 554 (600-1)	600-1 <sup>1</sup> / <sub>2</sub> 574 (600-1 <sup>1</sup> / <sub>2</sub> )	740-2 <sup>1</sup> / <sub>4</sub> 714 (800-2 <sup>1</sup> / <sub>4</sub> )



HIRL Rwy 4-22 **1**  
MIRL Rwy 15-33 **1**  
REIL Rws 4, 15, 22 and 33 **1**